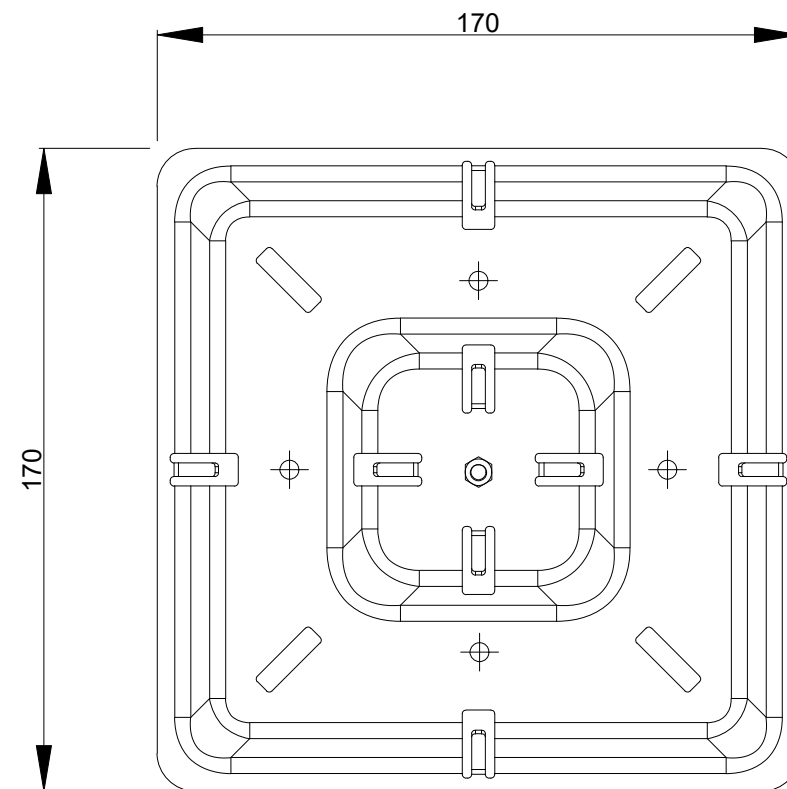
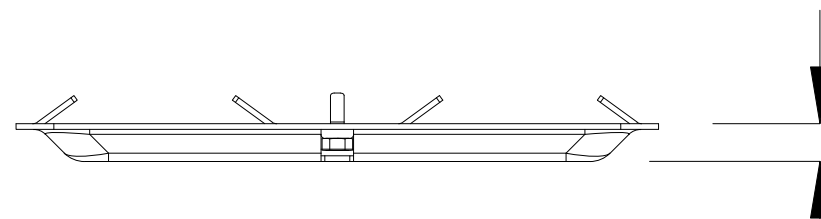


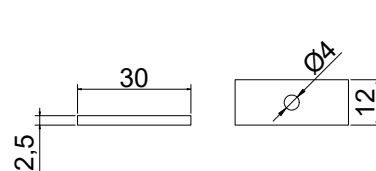
TOP VIEW



BOTTOM VIEW

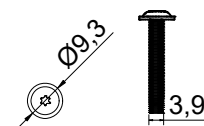


SIDE
VIEW



SIDE VIEW TOP VIEW

30 X 12MM STAINLESS STEEL
FLAT WASHER



TOP VIEW SIDE VIEW

M4X25MM BLACK A2 STAINLESS
TORX FLANGED BUTTON SCREW

NOTES:

ALL DIMENSIONS IN MILLIMETRES UNLESS
OTHERWISE SPECIFIED

Drawing may not be to scale. If you require manufacturer
information please contact Ryno.



Ryno Ltd
Castlepoint Way, Castlepoint
Ellon, United Kingdom
AB41 9RG
0203 967 3500
specification@rynogroup.co.uk
www.rynogroup.co.uk

COMPONENT:

RPS-FR WU
NON-COMBUSTIBLE WIND
UPLIFT STACKABLE PAVING
SUPPORT PAD

DRAWN BY:	REV	DATE
K MYA	03	15/08/2024

SCALE 1:2

Ryno Ltd. Registered in England. Reg. No: 09623250. Reg. Address:
Europa House, Alford Road, Cranleigh, GU6 8NO
© Copyright & design right Ryno Ltd. 2021. All rights reserved.