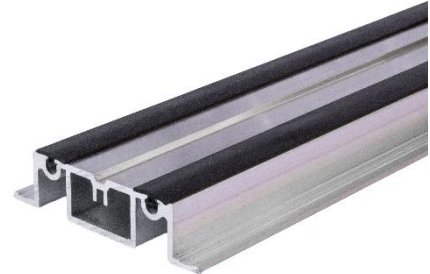


DS-TR

Decking Support Top Rail

Overview

The DS-TR Decking Support Top Rail is an advanced aluminium rail used in lattice frame rail systems. It provides comprehensive support for deckboards and can be used in conjunction with primary rails to create a lattice structure. It features channels designed to accept a push in rubber gasket, ideal for shock and sound absorption. The innovative design makes it a key component when integrating various surface finishes and balustrade systems offered by RYNO.



- Shock-absorbent gasket eliminates decking grinding against aluminium
- Allows for multiple surface interfaces with minimum threshold variance
- Enables integration with Linear Track Balustrade and various decking surfaces
- Made from inherently non-combustible aluminium



Details

Material	Aluminium 6063-T6 Gasket: EPDM rubber
Dimensions	20x60x3600mm

Performance

Maximum span	600mm
Biological and chemical	Resistant to moulds, algae, alkali, bitumen, UV
Warranty	30 years
Design life	60 years

Compatible Components

	DS Aluminium Joist		DSB Decking Screw
	VC Vitrified Composite Decking Board		