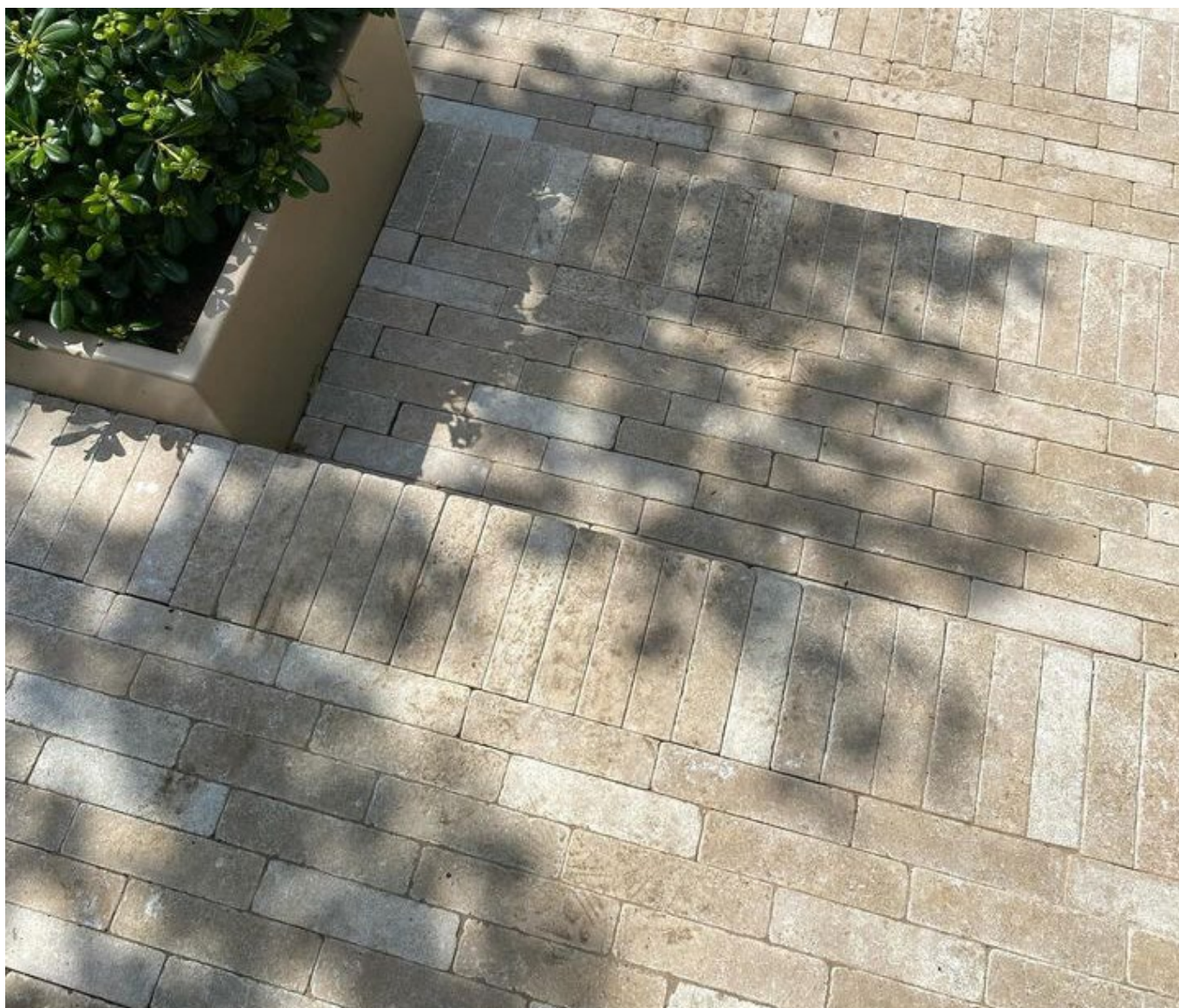


TERRASMART NATURAL STONE SETS SURFACING SYSTEM

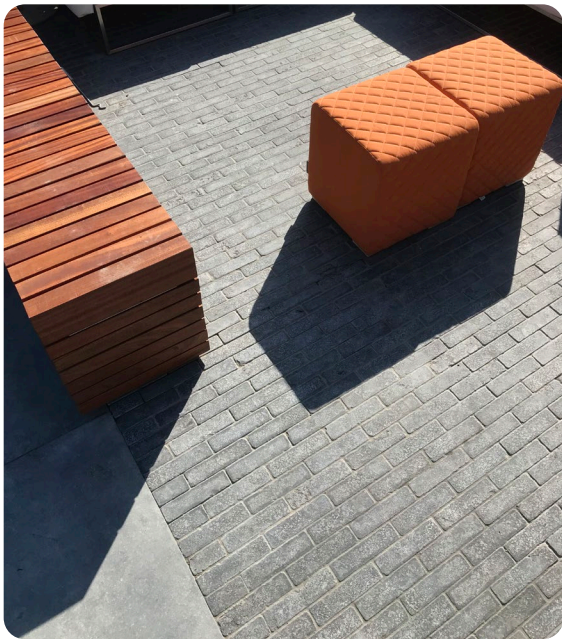
Raised, natural stone setts system bringing natural aesthetics to roof terraces



OVERVIEW

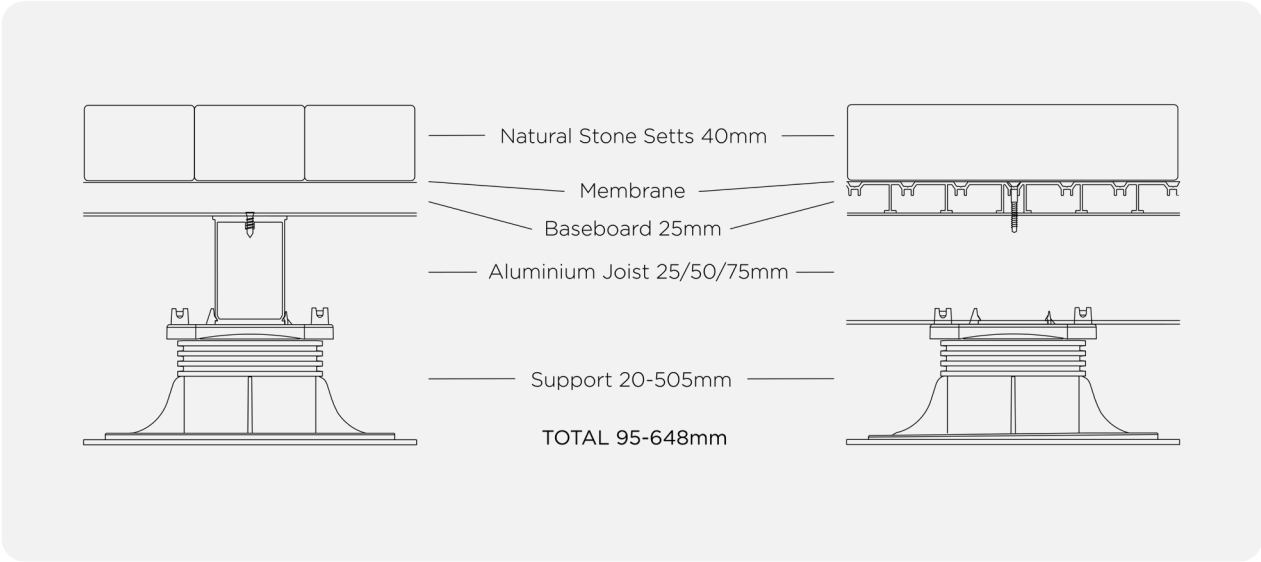
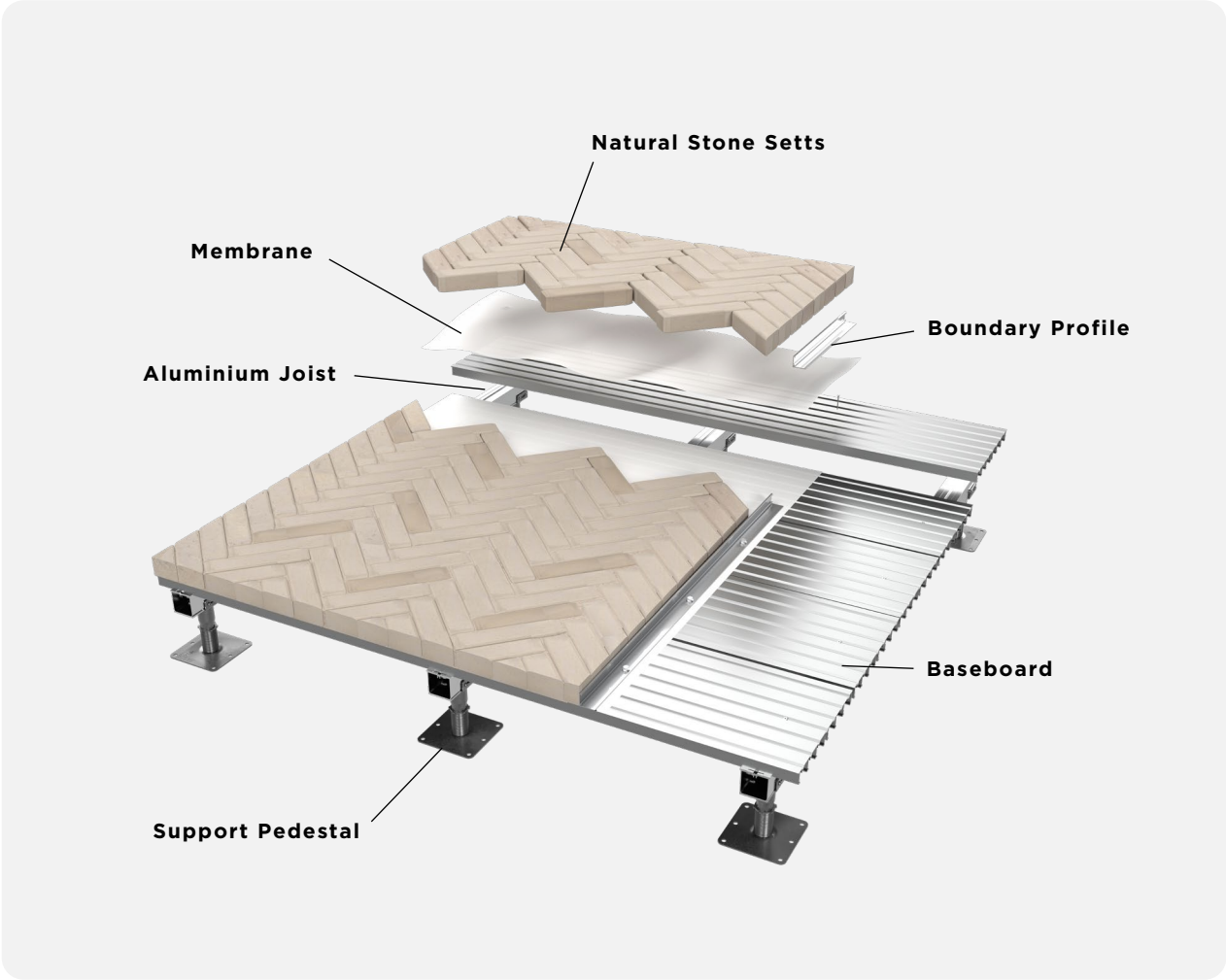
The TerraSmart® Natural Stone Setts system allows you to bring the classic look of traditional landscaped parks and historic gardens to your roof terrace. This raised system enables the use of authentic natural stone cobbles and setts, creating a timeless and elegant outdoor space. The raised design allows for sufficient drainage, protection the roof membrane, and board lightweight height flexibility.

- Raised system design
- Clean heritage aesthetic
- Multiple sett layouts
- 7 finish options across 5 stone types
- Finishes paired with our Natural Stone Paving
- Integrates with other systems



TECHNICAL

Reaction to fire (to EN13501-1:2018):	Materials used are classed as inherently non-combustible, in accordance with Decision 94-611/EC
System overall height range:	96-648mm as standard (including Natural Stone surface)
Loading capability (to EN 1991-1:2002)	Concentrated load: >2.0kN as standard, available up to 4.5kN if required Uniformly distributed: >4.0kN as standard, available up to 7.5kN if required/m2
Approx. system weight:	105-125kg/m2



FINISHES



Desert Beige Limestone (Washed)



Desert Beige Limestone (Etched)



Canyon Grey Sandstone



Fossil Buff Sandstone



Quarry Grey Limestone (Washed)



Quarry Grey Limestone (Etched)



Petra Buff Sandstone

COMPONENTS

Visit our system page for further compatable components.



Desert Beige Limestone Setts
LS-DB



Geotextile Filtration Membrane
GFM



Baseboard
BB



Aluminium Joist
DS



Non-Combustible Adjustable
Joist Support Pedestal
RD-FR



Boundary Profile
BP



Baseboard Screw
BBS



Hex Head Screw
HSS

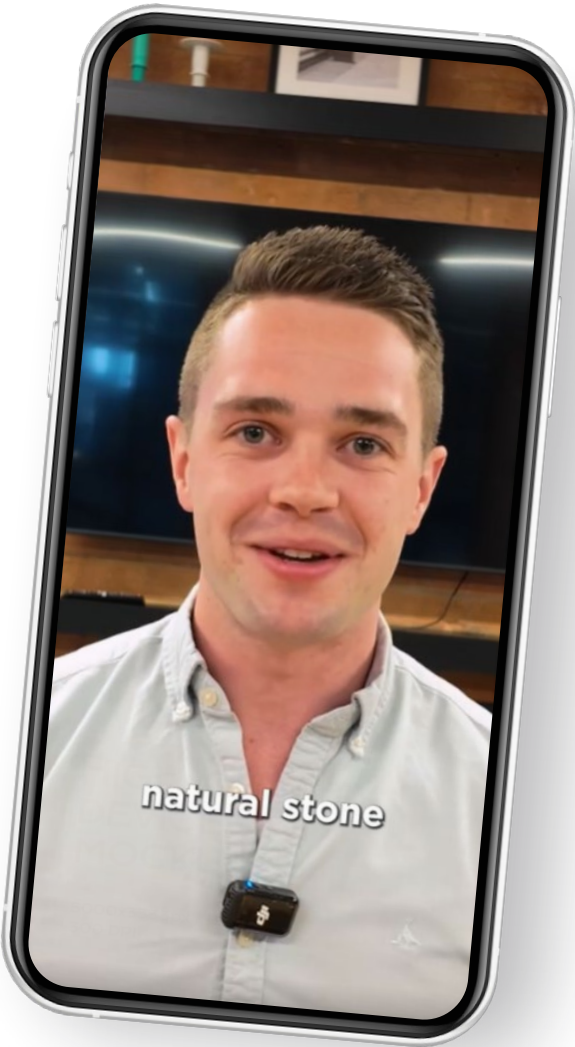
VIDEO

Want the full rundown on the TerraSmart Natural Stone Setts? Watch this video from our socials for a clear, concise walkthrough — everything you need to know, all in one place.

We regularly drop new and informative content on LinkedIn, from expert insights to industry updates. Give us a follow to stay ahead of the game!



**Follow Ryno
on LinkedIn**



SOLUTIONS START HERE

hello@rynosystems.com
www.rynosystems.com
+44 203 967 3500

HQ

Castlepoint
Castle Way, Ellon
AB41 9RG

STUDIO

2 Sutton Lane
London
EC1M 5PU

ASHFORD OFFICE

The Cobalt Building,
1600 Eureka Park, Kent
TN25 4BF

