

# VANTAGE VERTICAL

## JULIET GUARDING

Modular Juliet guarding system designed for all façade connections.



FINISH STRONG

# Vantage Vertical Juliet Guarding System.

Introduction



The Vantage Vertical Juliet Guarding is a beautiful **modular** system, capable of **large spans**, without any seen welding.



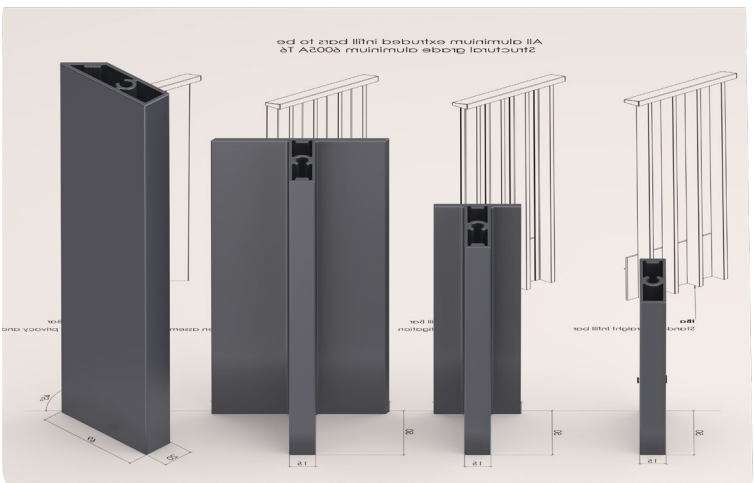
Vantage Vertical Juliet Balcony Systems are designed to match all other systems ensuring a perfect harmony of products on every project.

The extruded aluminium brackets are designed to offer a universal connection to all façade scenarios. Patent pending 7 degree sloped base track, designed to fit any bar type.

A full range of infill bars are available.

## BALUSTRADE OPTIONS

Solving wind mitigation, vision privacy, or simply just complementing design aesthetics, there is a variety of infill bar options available to suit any requirement.



## RANGE OF COLOURS

Allowing for architectural flair, all profiles are powder coated individually, giving options for 1 solid colour, or multiples.



# Vantage Vertical Juliet Guarding System Types.

Standard Scenarios



Fixing	Brick Side Fix
Product Code	VVJ-SF

MORE ON PAGES 4-5



Fixing	Brick Façade Face Fix
Product Code	VVJ-FF

MORE ON PAGES 6-7



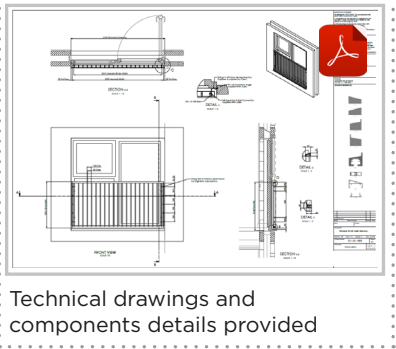
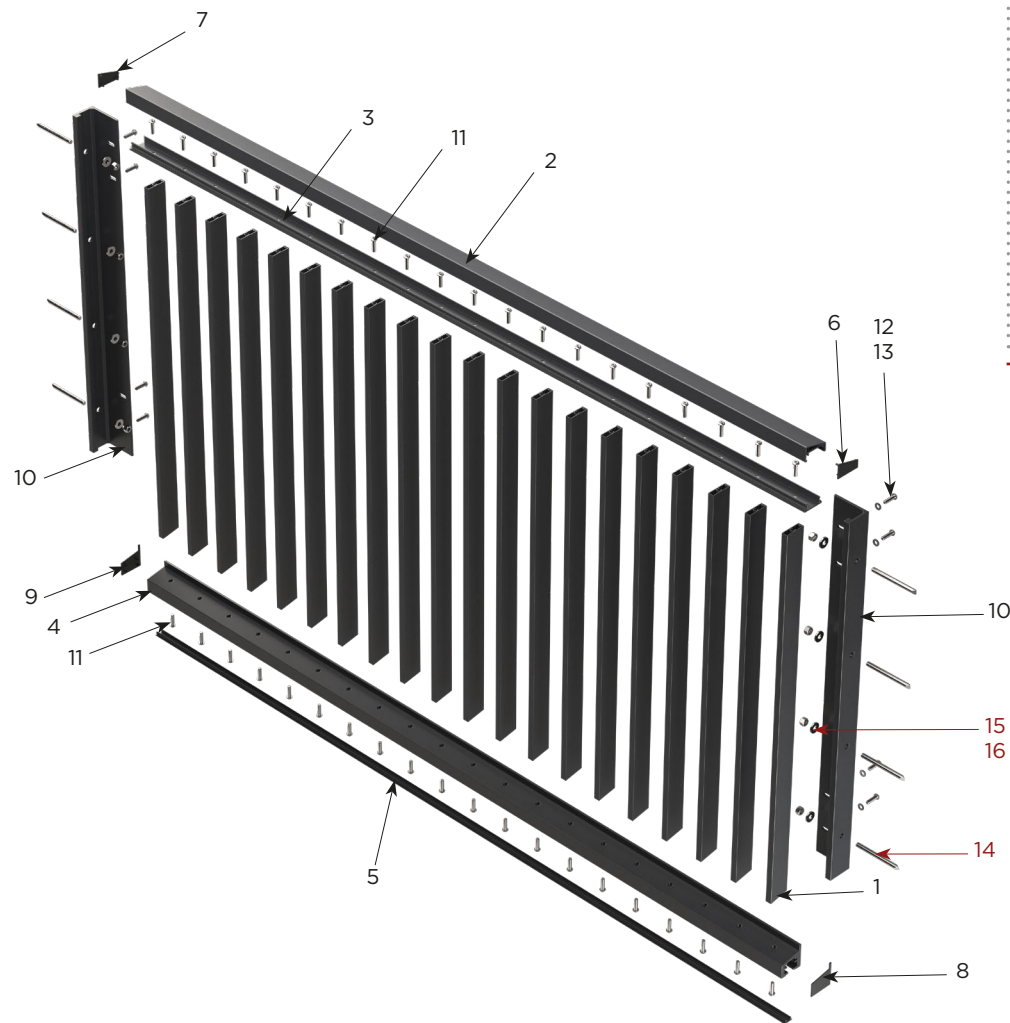
Fixing	Fix To Window Frame
Product Code	VVJ-WF

MORE ON PAGES 8-9





PRODUCT CODE VVJ-SF



EXAMPLE CONNECTION (not included)  
(14) M10 8.8 Chemical Resin Anchor  
(15) M10 Nut  
(16) M10 Washer

SYSTEM COMPONENTS

PROFILES		
1	IBa	Infill Bar
2	HCa	Handrail Capping
3	HBa	Handrail Base Carrier
4	BTa	Base Track
5	CCa	Cover Cap

FITTINGS			
6	CS2001	LH 60x35 Handrail End Cap	
7	CS2002	RH 60x35 Handrail End Cap	
8	CS2007	LH Base Track End Cap	
9	CS2008	RH Base Track End Cap	
10	CS3002	Juliet Bracket	

FIXINGS			
11	CSF2006	M8x30 Torx Pan Taptite	
12	CSF1009	M8x40 Torx Button Bolt	
13	CSF5011	M8 Form C Washer	



SYSTEM FEATURES

Horizontal Line Load  
0.74KN

Weight  
<20kg per l/m

Fast Installation  
Simple Adjustments

Fire Rated  
A2-s1, d0

Coating  
Qualicoat

SYSTEM CONNECTIONS

Connection Example  
Universal Bracket

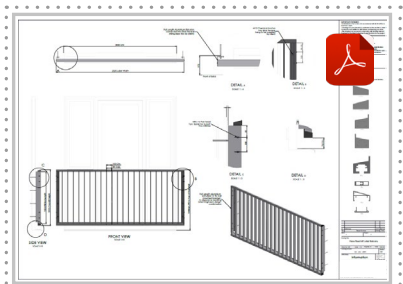
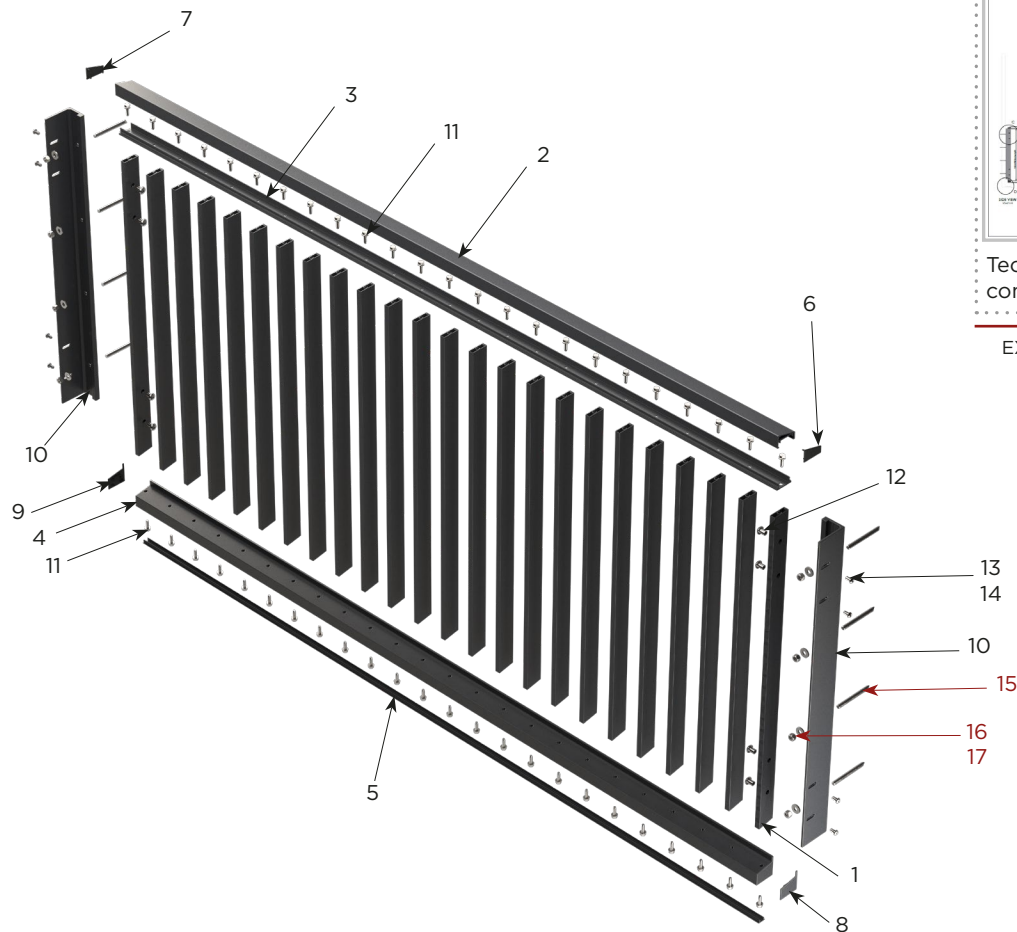
Connection Example  
Bespoke

Brick Façade Face Fix.

Product Overview



PRODUCT CODE VVJ-FF



Technical drawings and components details provided

EXAMPLE CONNECTION (not included)  
(15) M10 8.8 Chemical Resin Anchor  
(16) M10 Nut  
(17) M10 Washer

SYSTEM COMPONENTS

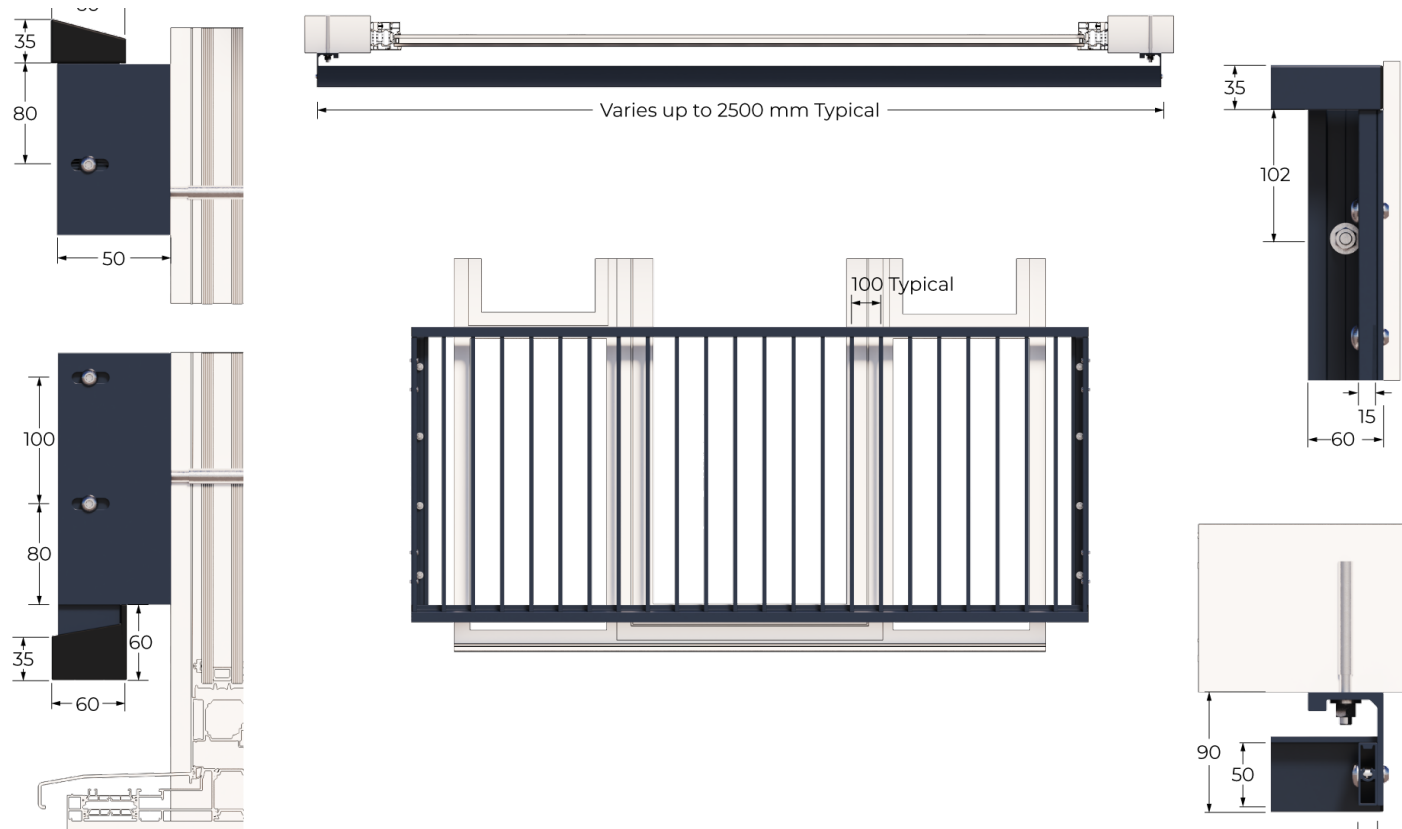
PROFILES		
1	IBa	Infill Bar
2	HCa	Handrail Capping
3	HBa	Handrail Base Carrier
4	BTa	Base Track
5	CCa	Cover Cap

FITTINGS		
6	CS2001	LH 60x35 Handrail End Cap
7	CS2002	RH 60x35 Handrail End Cap
8	CS2007	LH Base Track End Cap
9	CS2008	RH Base Track End Cap
10	CS3002	Juliet Bracket

FIXINGS		
11	CSF2006	M8x30 Torx Pan Taptite
12	CSF1009	M8x16 Torx Button Bolt
13	CSF3000	M8x16 Torx Button Nut
14	CSF5011	M8 Form C Washer

Brick Façade Face Fix.

Typical System Features



SYSTEM FEATURES

Horizontal Line Load  
0.74KN

Weight  
<20kg per l/m

Fast Installation  
Simple Adjustments

Fire Rated  
A2-s1, d0

Coating  
Qualicoat

SYSTEM CONNECTIONS

Connection Example  
Universal Bracket

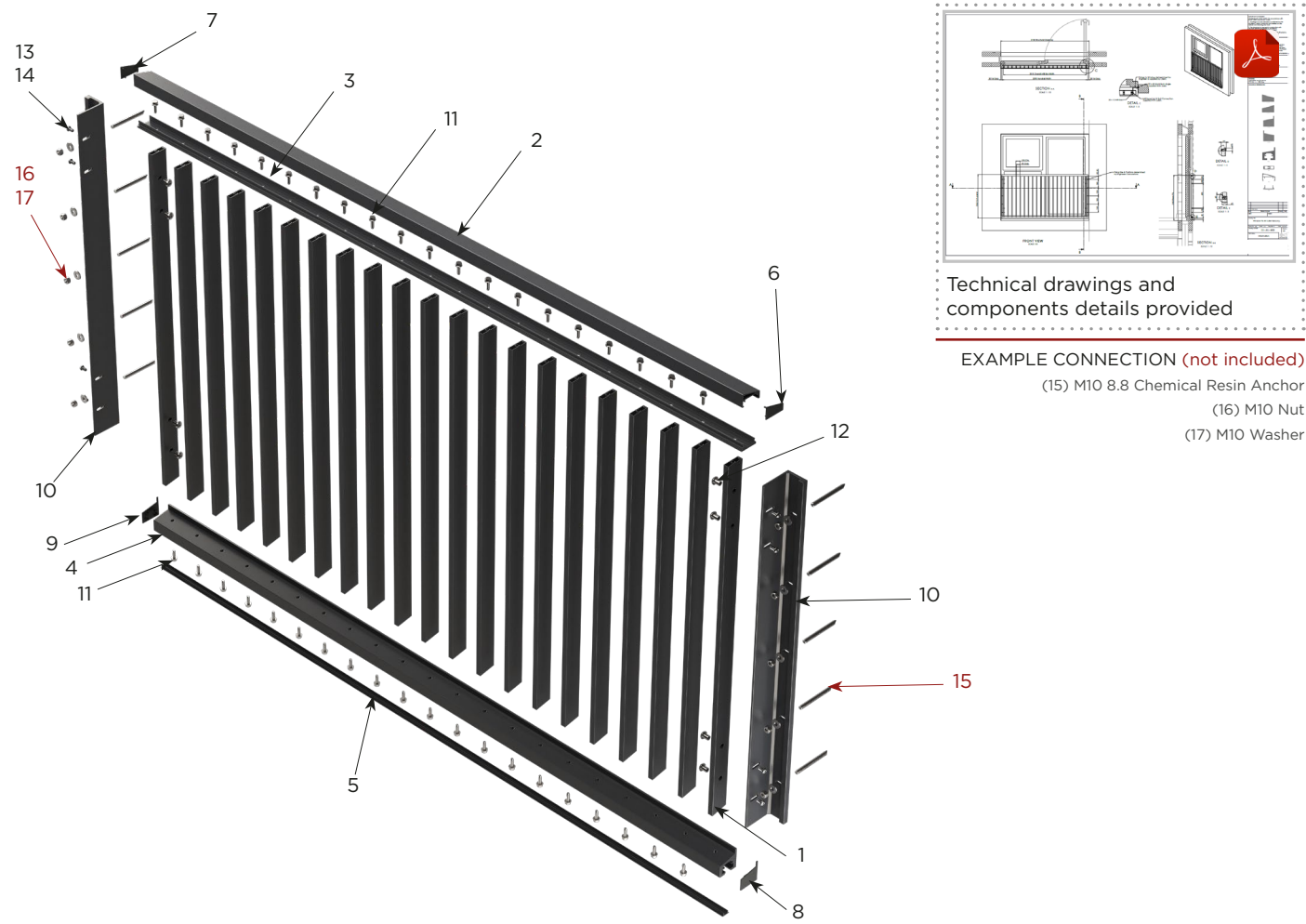
Connection Example  
Bespoke

Fix To Window Frame.

Product Overview



PRODUCT CODE VVJ-WF



SYSTEM COMPONENTS

PROFILES		
1	IBa	Infill Bar
2	HCa	Handrail Capping
3	HBa	Handrail Base Carrier
4	BTa	Base Track
5	CCa	Cover Cap

FITTINGS		
6	CS2001	LH 60x35 Handrail End Cap
7	CS2002	RH 60x35 Handrail End Cap
8	CS2007	LH Base Track End Cap
9	CS2008	RH Base Track End Cap
10	CS3002	Juliet Bracket

FIXINGS		
11	CSF2006	M8x30 Torx Pan Taptite
12	CSF1009	M8x16 Torx Button Bolt
13	CSF3000	M8x16 Torx Button Nut
14	CSF5011	M8 Form C Washer

Fix To Window Frame.

Typical System Features



SYSTEM FEATURES

Horizontal Line Load  
0.74KN

Weight  
<20kg per l/m

Fast Installation  
Simple Adjustments

Fire Rated  
A2-s1, d0

Coating  
Qualicoat

SYSTEM CONNECTIONS

Connection Example  
Universal Bracket

Connection Example  
Bespoke

# Our Other Systems.

Product Snapshot



## LINEAR BALUSTRADE SYSTEMS

Face fixed balustrade system, with a range of vertical infills connected to an extruded 6mm thick fascia panel.

Patent pending drainage skirt to project the water 30mm away from the balcony below. Simple solution to work with all soffit types.

First fix brackets to suit steel frames or concrete slabs - all with built in tolerance for a simple installation.



PRODUCT HIGHLIGHTS AT A GLANCE:

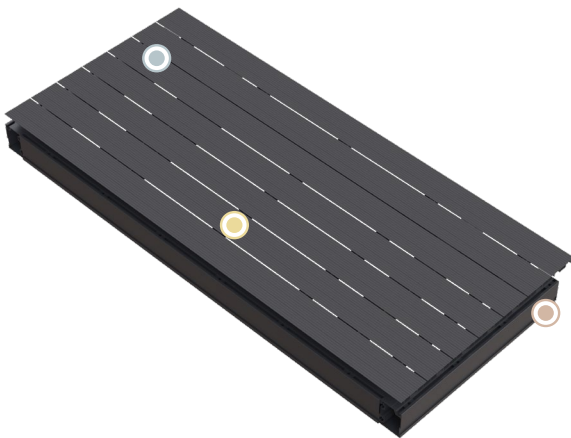
- Under 25kg per l/m
- Sloped Handrail - Finished in a Textured Paint
- No welds or visible fixings

## VERSATILE DECKING SYSTEMS

Designed for durability and easy installation, our Versatile Elite decking systems offer open joints or channelled drainage at no extra cost – perfect to meet any project drainage requirements.

Patent pending removable top surface eliminates any risk of site damage when fitting a balcony system, saving time and unexpected costs.

For maximum cost efficiency, we can offer Versatile Light, the perfect board for remediation projects.



PRODUCT HIGHLIGHTS AT A GLANCE:

- Boards are A2 Class Non-Combustible
- Slip Resistant Decking Properties
- Connects to Steel Frame or Aluminium Chassis

# Get Gateway Ready.

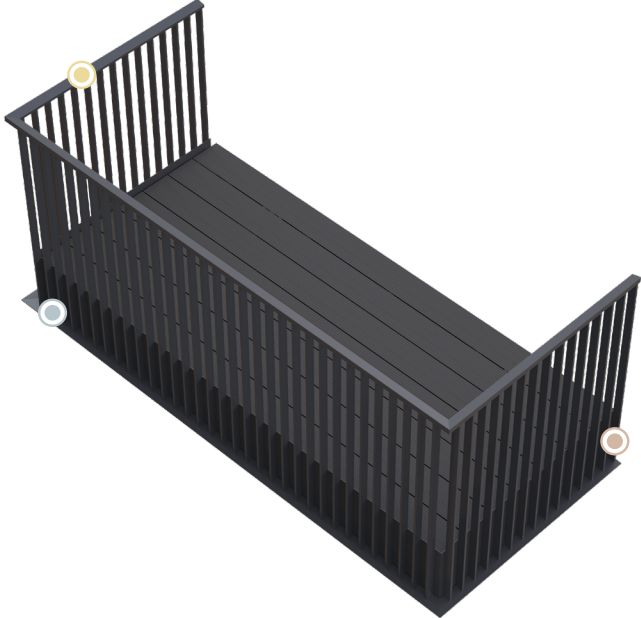
The balcony system designed for BSR Gateway 2



## GATEWAY BALCONY SYSTEM



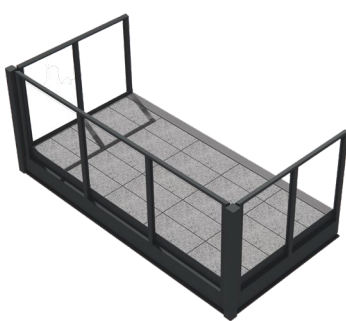
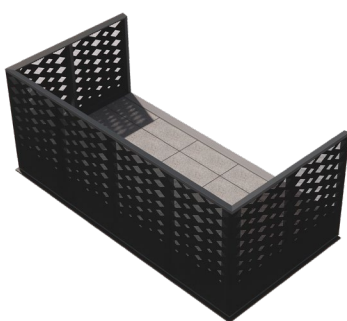
- ✓ Fabricated Steel Frame, OR
- ✓ Processed Aluminium Chassis
- ✓ Final processing - less than 50 cuts
- ✓ Processed in 44 minutes per system
- ✓ Assembled in 1 hour per system
- ✓ No Sheet Metal
- ✓ Cost Efficient



PRODUCT HIGHLIGHTS AT A GLANCE:

- 30mm drip edge for BS8579:2020
- Balustrade assembly with no welds or visible fixings
- Interlocking soffits

## YOUR GATEWAY READY BALCONY SYSTEMS



MF PB GT

HIGHLIGHTS AT A GLANCE:

- WEIGHT PER M2  
**75kg**
- ASSEMBLY TIME  
**1 Hour**





# ENHANCING LIFE ON THE SKYLINE.

## RYNO LTD

[hello@rynosystems.com](mailto:hello@rynosystems.com)

+44 (0) 203 967 3500

[rynosystems.com](http://rynosystems.com)

## RYNO HEAD OFFICE

Castlepoint,  
Castle Way, Ellon  
AB41 9RG

## RYNO STUDIO

2 Sutton Lane  
London  
EC1M 5PU

## RYNO ASHFORD OFFICE

The Cobalt Building,  
1600 Eureka Park, Kent  
TN25 4BF

**FINISH STRONG**