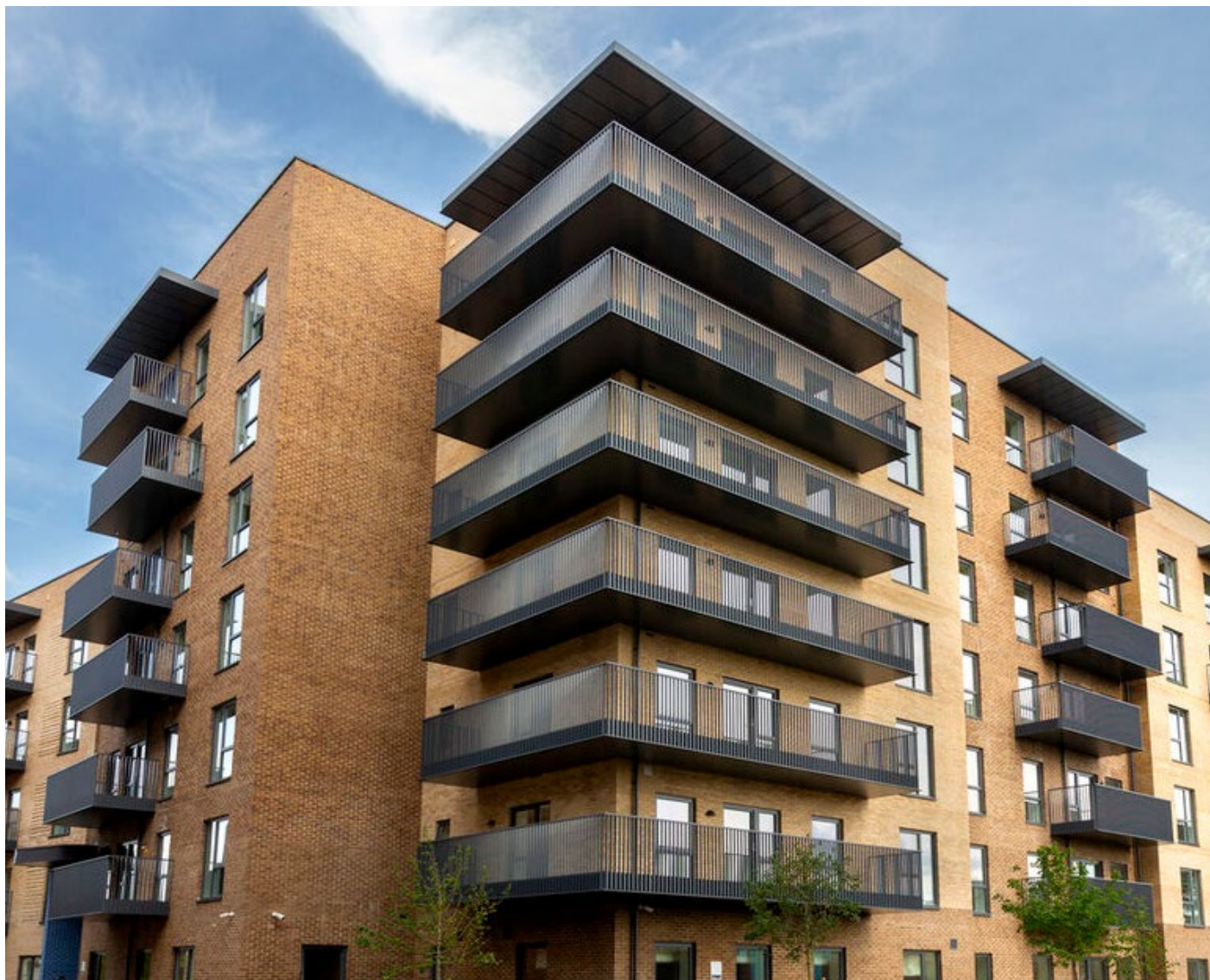


LINEAR TRACK

BALUSTRADE SYSTEM

A fully integrated, versatile balustrade system.



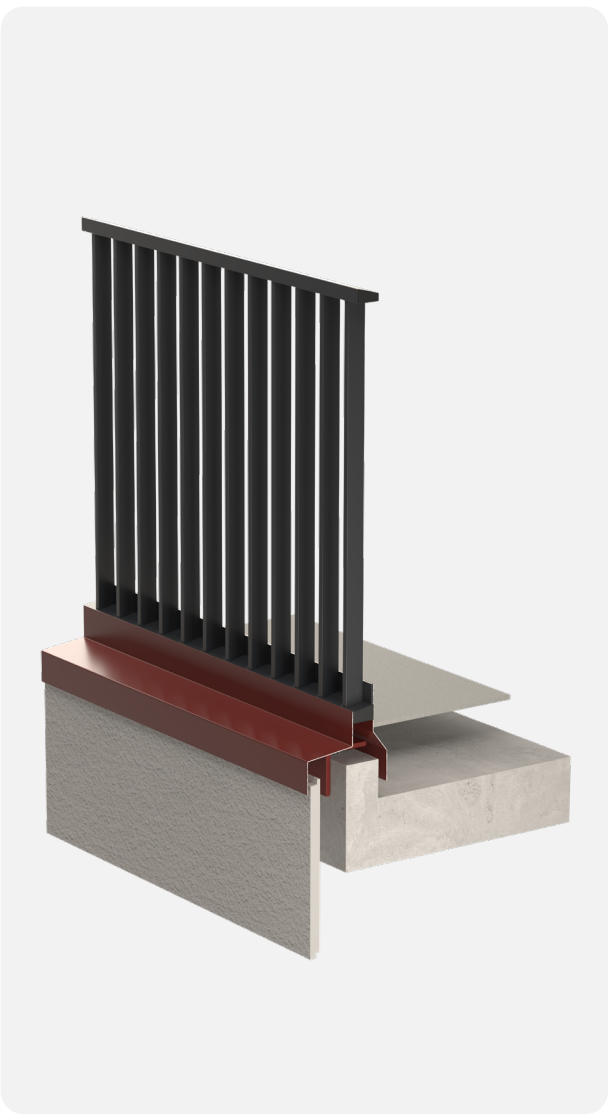
FINISH STRONG

Linear Track Balustrade System.

Introduction



The Linear Track Balustrade System is a rigid, yet beautiful **modular system**, without any seen welding.



Linear Track Balustrade Systems are designed to match all other systems ensuring a perfect harmony of products on every project.

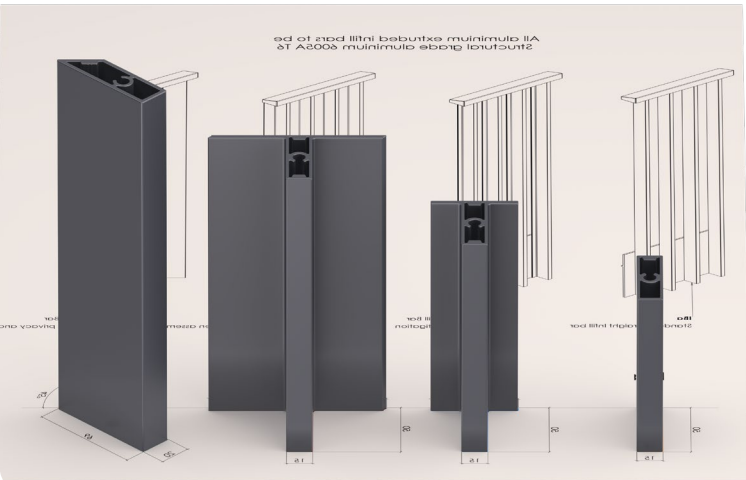
Top or Side fixed balustrade system with a structural base track – the perfect system for abutting to copings or flashings.

7 degree sloped base track, featuring a patent-pending sliding track, adapts to all types of site condition and increases fitting speed.

A range of first fix brackets connect to steel frames, concrete slabs, or parapet walls.

BALUSTRADE OPTIONS

Solving wind mitigation, vision privacy, or simply just complementing design aesthetics, there is a variety of infill bar options available to suit any requirement.



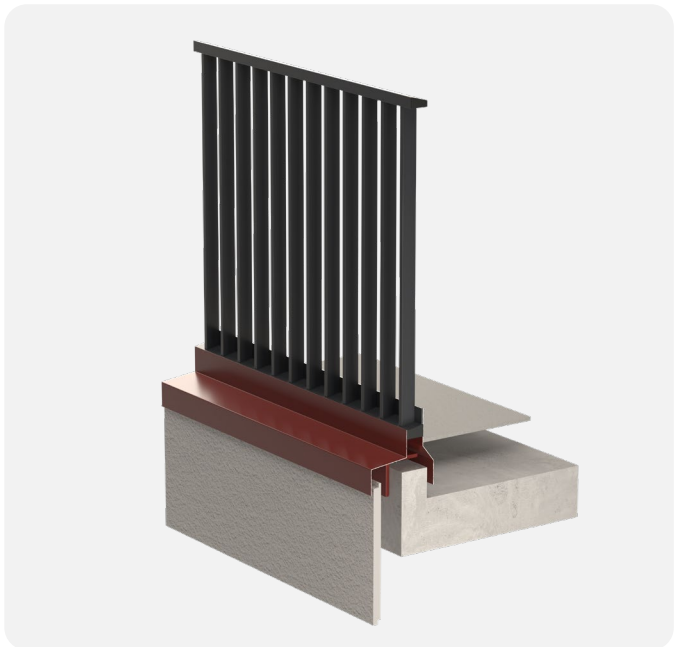
RANGE OF COLOURS

Allowing for architectural flair, all profiles are powder coated individually, giving options for 1 solid colour, or multiples.



Linear Track Balustrade System Infill Bar.

Standard Scenarios



Fixing	Upstand Fix
Product Code	LT-UF

MORE ON PAGES 4-5



Fixing	Top Fixed to Concrete
Product Code	LT-CFT

MORE ON PAGES 6-7



Fixing	Top Fixed to Steel
Product Code	LT-SFT

MORE ON PAGES 8-9



Fixing	Parapet Fix
Product Code	LT-PFT

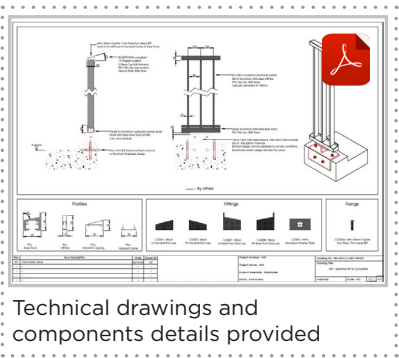
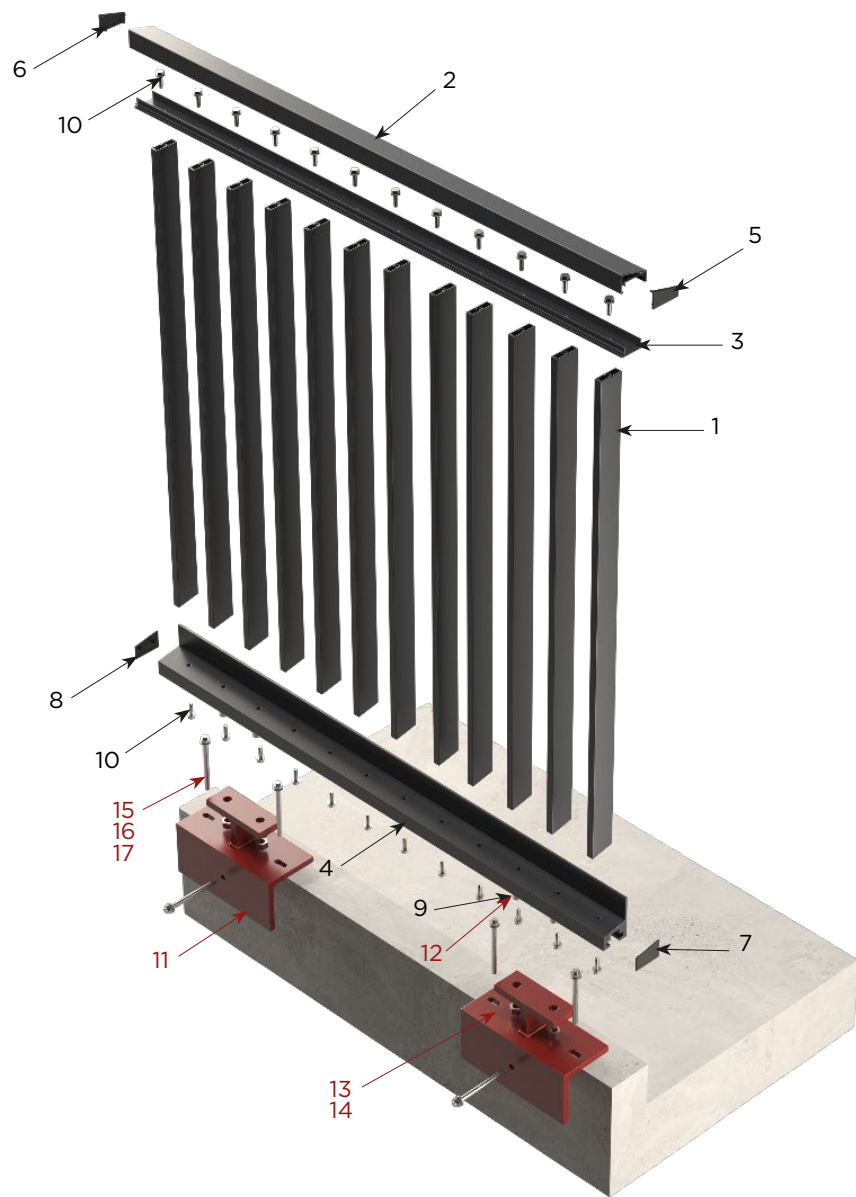
MORE ON PAGES 10-11

Upright Fix.

Product Overview



PRODUCT CODE **LT-UF**



- EXAMPLE CONNECTION (not included)**
- (11) Mild Steel Bracket typically 400-600mm centres
 - (12) M16 8.8 Hex Set Bolt
 - (13) M16 Nut
 - (14) M16 Washer
 - (15) M10 8.8 Chemical Resin Anchor
 - (16) M10 Nut
 - (17) M10 Washer

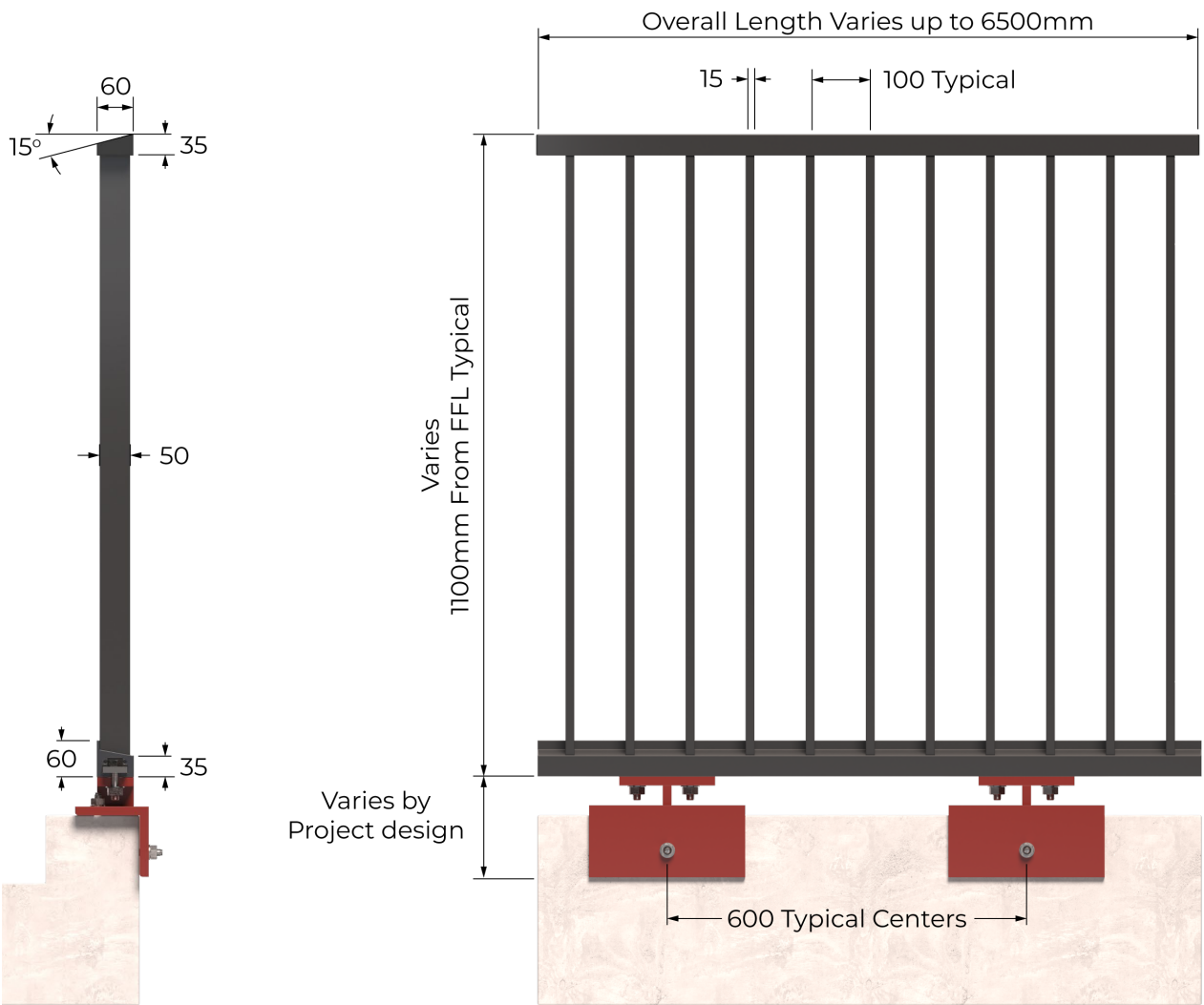
SYSTEM COMPONENTS

PROFILES		
1	IBa	Infill Bar
2	HCa	Handrail Capping
3	HBa	Handrail Base Carrier
4	BTa	Base Track
FIXINGS		
10	CSF2006	M8x30mm Torx Pan Taptite

FITTINGS			
5	CS2001	LH 60x35 Handrail End Cap	
6	CS2002	RH 60x35 Handrail End Cap	
7	CS2007	LH Base Track End Cap	
8	CS2008	RH Base Track End Cap	
9	CS3001	Aluminium Washer Plate	

Upright Fix.

Typical System Features



SYSTEM FEATURES

Horizontal Line Load
0.74KN

Weight
<20kg per l/m

Fast Installation
Simple Adjustments

Fire Rated
A2-s1, d0

Coating
Qualicoat

SYSTEM CONNECTIONS

Connection Example
Universal Bracket

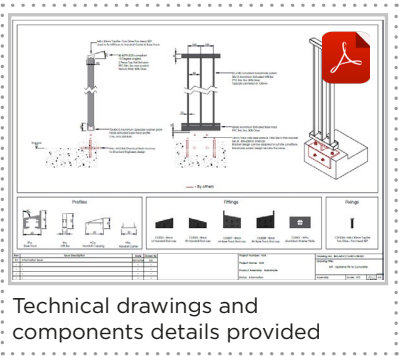
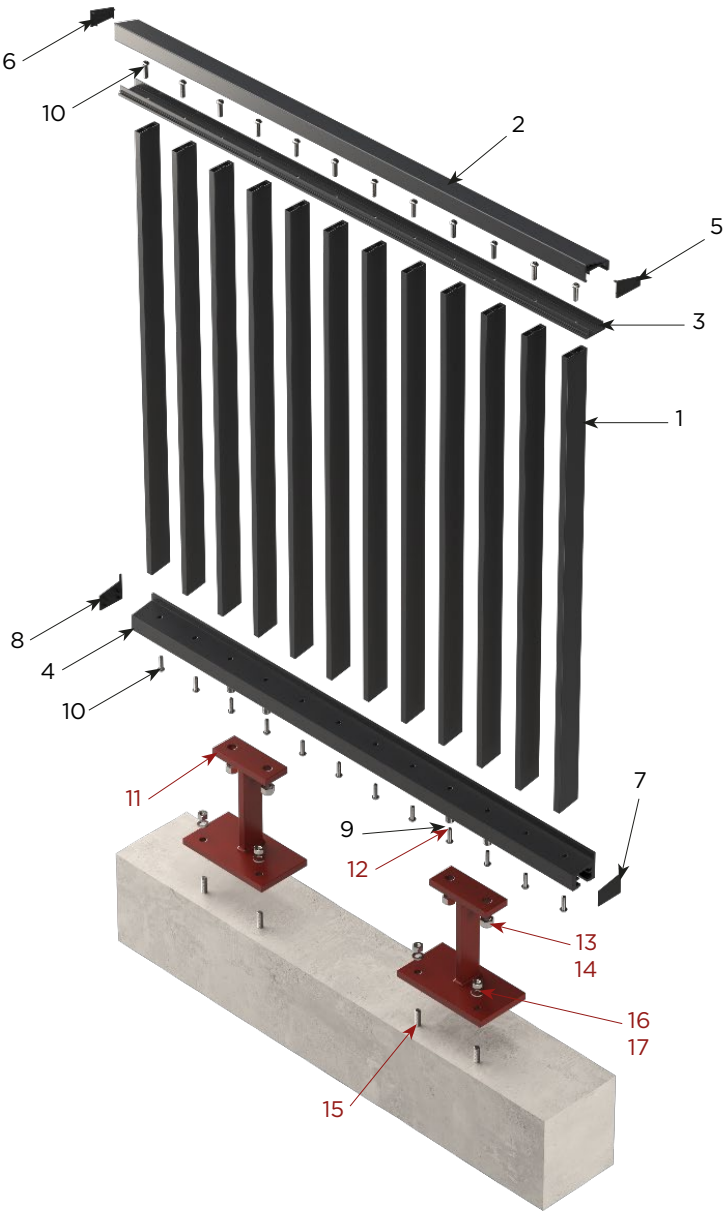
Connection Example
Bespoke

Top Fixed to Concrete.

Product Overview



PRODUCT CODE **LT-CFT**



- EXAMPLE CONNECTION (not included)**
- (11) Mild Steel Bracket typically 400-600mm centres
 - (12) M16 8.8 Hex Set Bolt
 - (13) M16 Nut
 - (14) M16 Washer
 - (15) M10 8.8 Chemical Resin Anchor
 - (16) M10 Nut
 - (17) M10 Washer

SYSTEM COMPONENTS

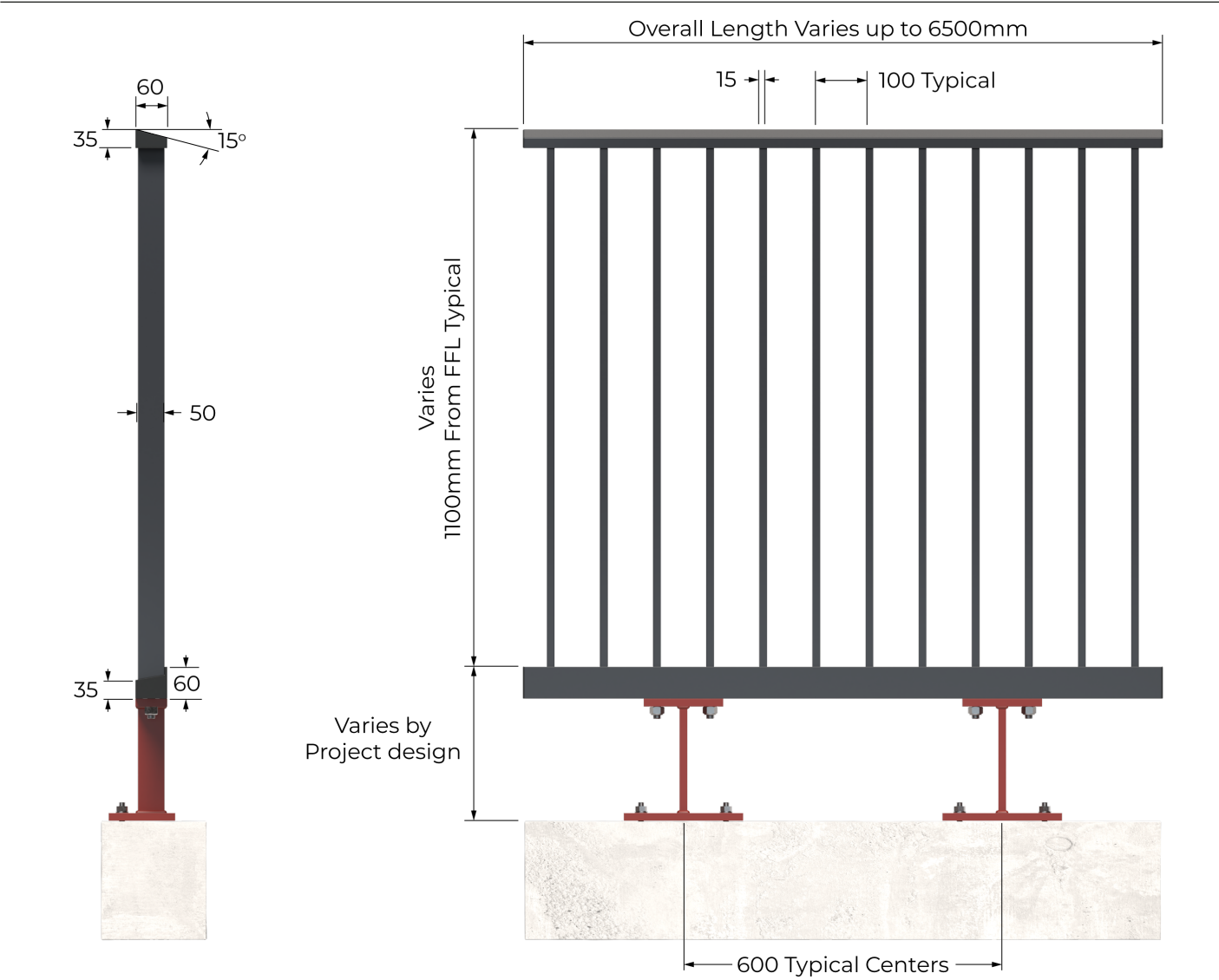
PROFILES		
1	IBa	Infill Bar
2	HCa	Handrail Capping
3	HBa	Handrail Base Carrier
4	BTa	Base Track

FIXINGS		
10	CSF2006	M8x30mm Torx Pan Taptite

FITTINGS			
5	CS2001	LH 60x35 Handrail End Cap	
6	CS2002	RH 60x35 Handrail End Cap	
7	CS2007	LH Base Track End Cap	
8	CS2008	RH Base Track End Cap	
9	CS3001	Aluminium Washer Plate	

Top Fixed to Concrete.

Typical System Features



SYSTEM FEATURES

Horizontal Line Load
0.74KN

Weight
<20kg per l/m

Fast Installation
Simple Adjustments

Fire Rated
A2-s1, d0

Coating
Qualicoat

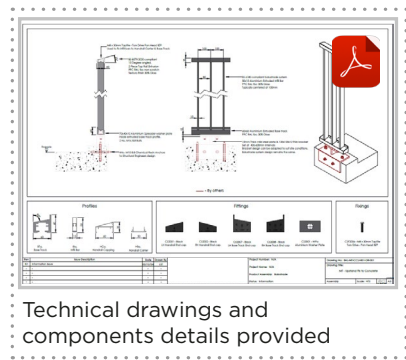
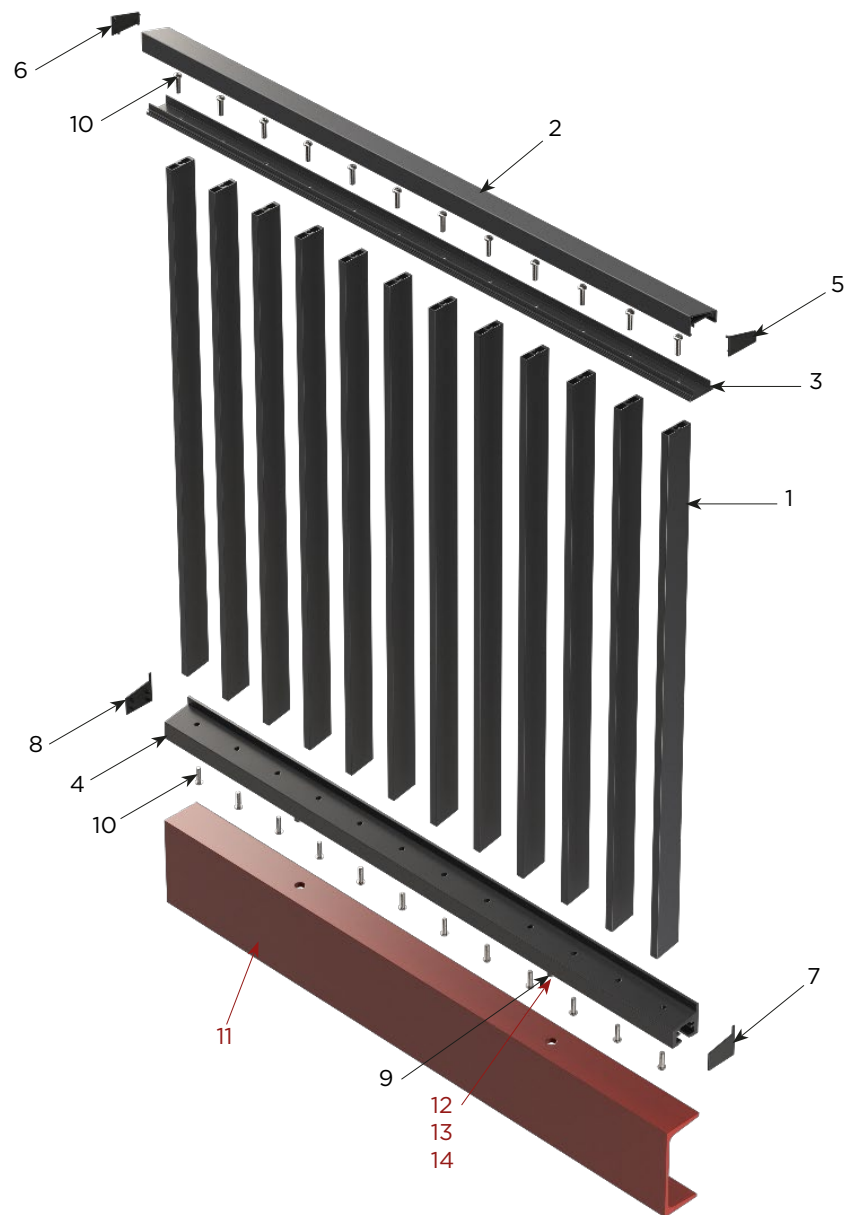
SYSTEM CONNECTIONS

Connection Example
Mild Steel Bracket

Connection Example
Bespoke



PRODUCT CODE **LT-SFT**

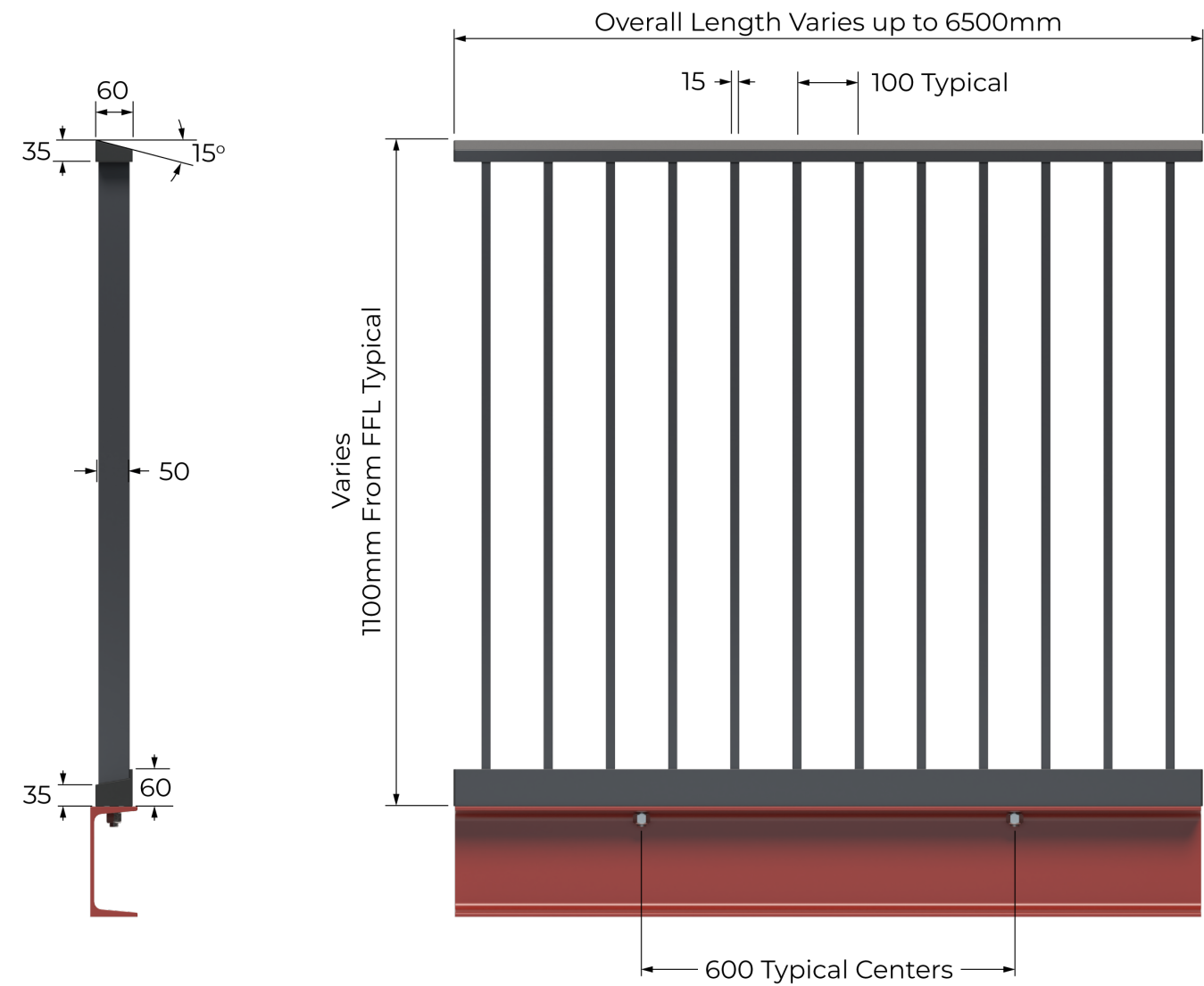


EXAMPLE CONNECTION (not included)
(11) Mild Steel Bracket
(12) M16 8.8 Hex Set Bolt 400-600mm centres
(13) M16 Nut
(14) M16 Washer

SYSTEM COMPONENTS

PROFILES		
1	IBa	Infill Bar
2	HCa	Handrail Capping
3	HBa	Handrail Base Carrier
4	BTa	Base Track
FIXINGS		
10	CSF2006	M8x30mm Torx Pan Taptite

FITTINGS			
5	CS2001	LH 60x35 Handrail End Cap	
6	CS2002	RH 60x35 Handrail End Cap	
7	CS2007	LH Base Track End Cap	
8	CS2008	RH Base Track End Cap	
9	CS3001	Aluminium Washer Plate	



SYSTEM FEATURES

Horizontal Line Load
0.74KN

Weight
<20kg per l/m

Fast Installation
Simple Adjustments

Fire Rated
A2-s1, d0

Coating
Qualicoat

SYSTEM CONNECTIONS

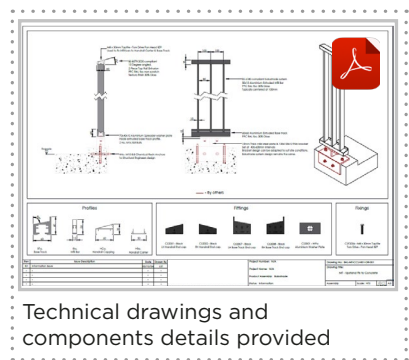
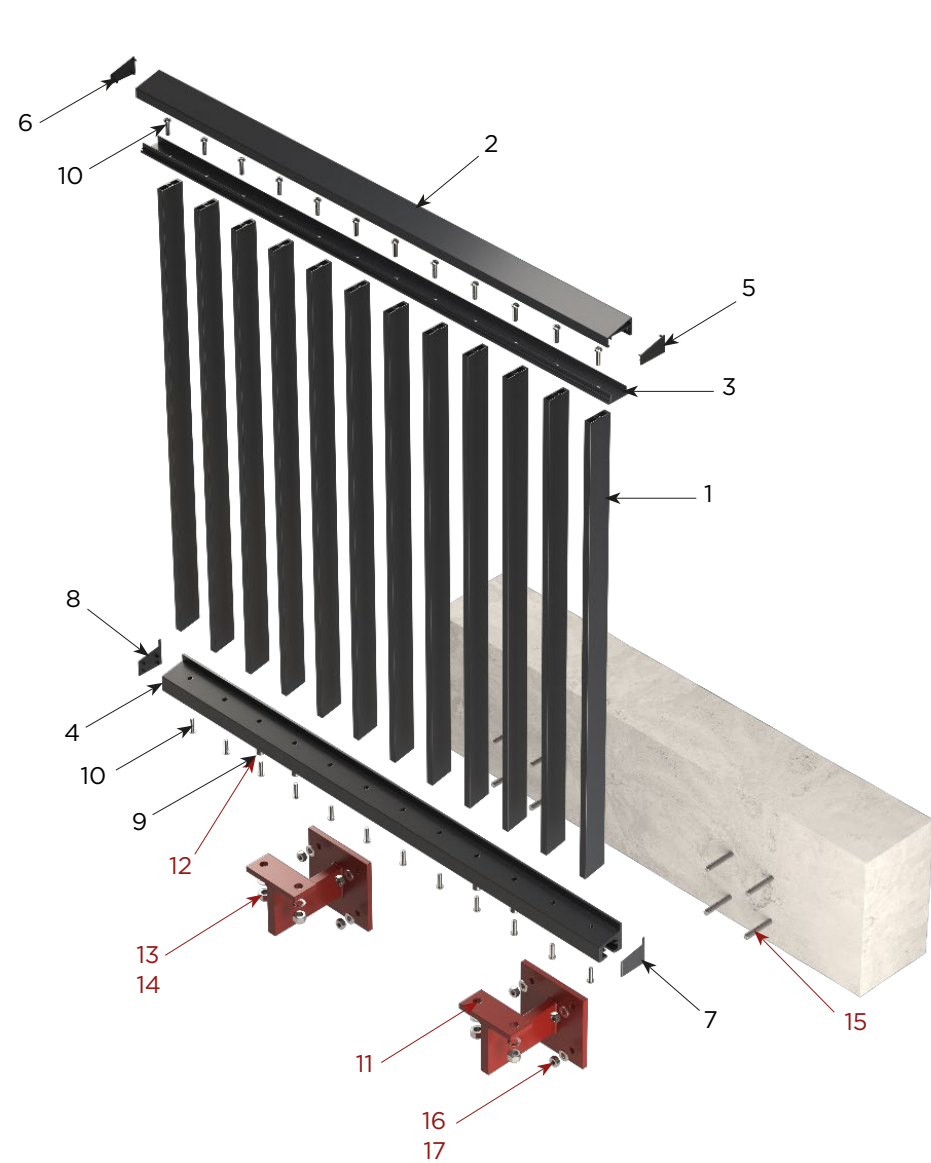
Connection Example
Mild Steel PFC

Connection Example
Mild Steel UC

Connection Example
Bespoke



PRODUCT CODE **LT-PF**

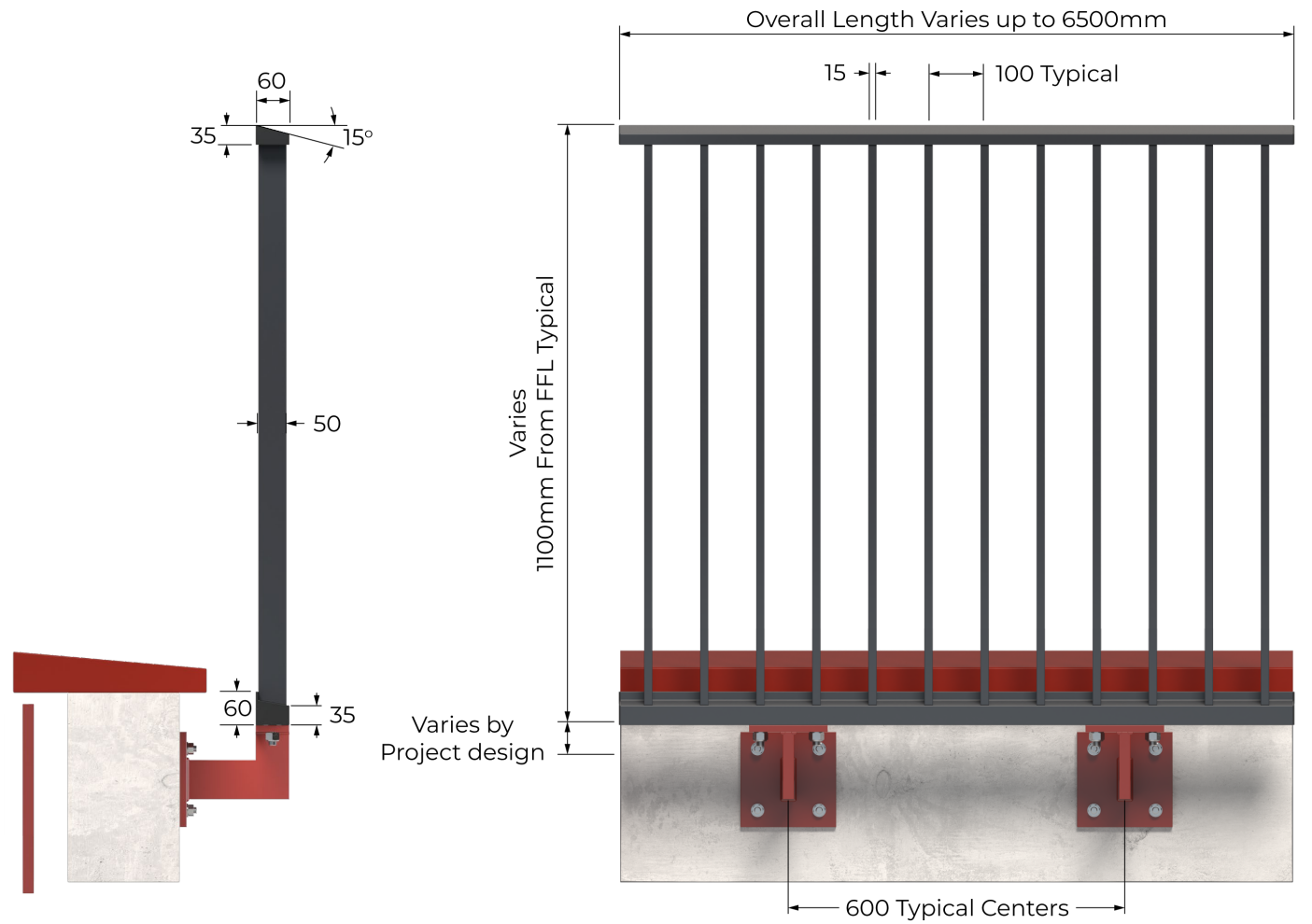


- EXAMPLE CONNECTION (not included)**
- (11) Mild Steel Bracket typically 400-600mm centres
 - (12) M16 8.8 Hex Set Bolt
 - (13) M16 Nut
 - (14) M16 Washer
 - (15) M10 8.8 Chemical Resin Anchor
 - (16) M10 Nut
 - (17) M10 Washer

SYSTEM COMPONENTS

PROFILES		
1	IBa	Infill Bar
2	HCa	Handrail Capping
3	HBa	Handrail Base Carrier
4	BTa	Base Track
FIXINGS		
10	CSF2006	M8x30mm Torx Pan Taptite

FITTINGS			
5	CS2001	LH 60x35 Handrail End Cap	
6	CS2002	RH 60x35 Handrail End Cap	
7	CS2007	LH Base Track End Cap	
8	CS2008	RH Base Track End Cap	
9	CS3001	Aluminium Washer Plate	



SYSTEM FEATURES

Horizontal Line Load
0.74KN

Weight
<20kg per l/m

Fast Installation
Simple Adjustments

Fire Rated
A2-s1, d0

Coating
Qualicoat

SYSTEM CONNECTIONS

Connection Example
Mild Steel Bracket

Connection Example
Bespoke

Our Other Systems.

Product Snapshot.



VANTAGE JULIET BALCONY SYSTEMS

Structurally engineered profiles make up a modular system which is fully compliant with BS8579:2020 and BS6180.

Top and bottom sloped profiles reduce pooling water and dirt build-up.



PRODUCT HIGHLIGHTS AT A GLANCE:

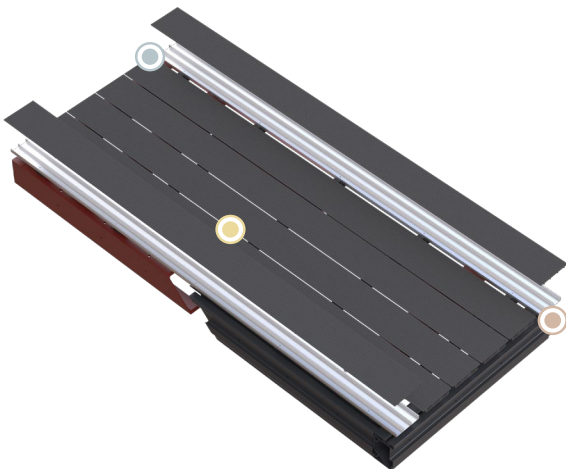
- Under 25kg per l/m
- Sloped Handrail - Finished in a Textured Paint
- No welds or visible fixings

VERSATILE DECKING SYSTEMS

Designed for durability and easy installation, our Versatile Elite decking systems offer open joints or channelled drainage at no extra cost – perfect to meet any project drainage requirements.

Patent pending removable top surface eliminates any risk of site damage when fitting a balcony system, saving time and unexpected costs.

For maximum cost efficiency, we can offer Versatile Light, the perfect board for remediation projects.



PRODUCT HIGHLIGHTS AT A GLANCE:

- Boards: A2 Class Non-Combustible
- Slip Resistant Decking Properties
- Connects to Steel Frame or Aluminium Chassis

Get Gateway Ready.

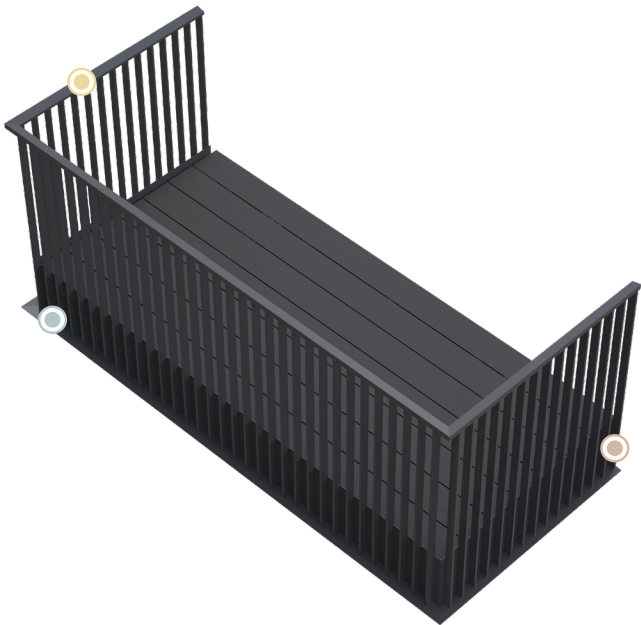
The market’s only GW2 ready balcony system



COBALT GATEWAY



- ✓ Fabricated Steel Frame, OR
- ✓ Processed Aluminium Chassis
- ✓ Final Processing - less than 50 cuts
- ✓ Processed in 44 minutes per system
- ✓ Assembled in 1 hour per system
- ✓ No Sheet Metal
- ✓ Cost Efficient



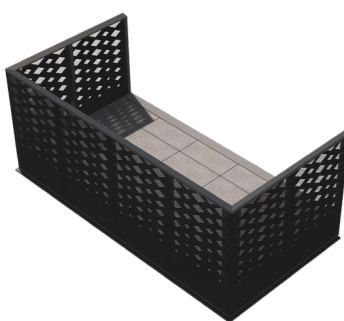
PRODUCT HIGHLIGHTS AT A GLANCE:

- 30mm drip edge for BS8579:2020
- Balustrade assembly with no welds or visible fixings
- Interlocking soffits

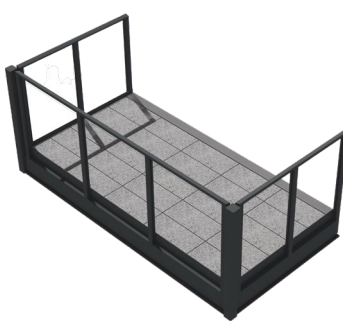
YOUR GATEWAY READY BALCONY SYSTEMS



MF



PB



GT

HIGHLIGHTS AT A GLANCE:

- WEIGHT PER M2
75kg
- ASSEMBLY TIME
1 Hour



ENHANCING LIFE ON THE SKYLINE.

RYNO LTD

hello@rynosystems.com

+44 (0) 203 967 3500

rynosystems.com

RYNO HEAD OFFICE

Castlepoint,
Castle Way, Ellon
AB41 9RG

RYNO STUDIO

2 Sutton Lane
London
EC1M 5PU

RYNO ASHFORD OFFICE

The Cobalt Building,
1600 Eureka Park, Kent
TN25 4BF

FINISH STRONG