

LINEAR PANEL BALUSTRADE SYSTEM

A fully integrated, versatile balustrade system.



FINISH STRONG

Linear Panel Balustrade System.

Introduction



The Linear Panel Balustrade System is a rigid, yet beautiful **modular system**, without any seen welding.



Linear Panel Balustrade Systems are designed to match all other systems ensuring a perfect harmony of products on every project.

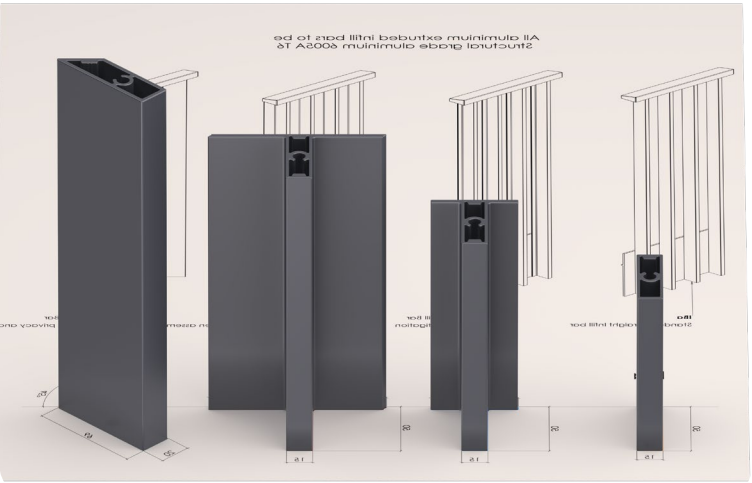
Simple infill balustrade panel system, designed for multiple applications.

Base track with end connections to steel posts, allowing for site tolerances.

A range of first fix brackets connect to steel frames, concrete slabs, or parapet walls.

BALUSTRADE OPTIONS

Solving wind mitigation, vision privacy, or simply just complementing design aesthetics, there is a variety of infill bar options available to suit any requirement.



RANGE OF COLOURS

Allowing for architectural flair, all profiles are powder coated individually, giving options for 1 solid colour, or multiples.



Linear Panel Balustrade System Infill Bar.

Standard Scenarios



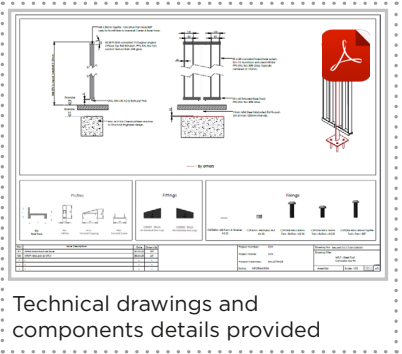
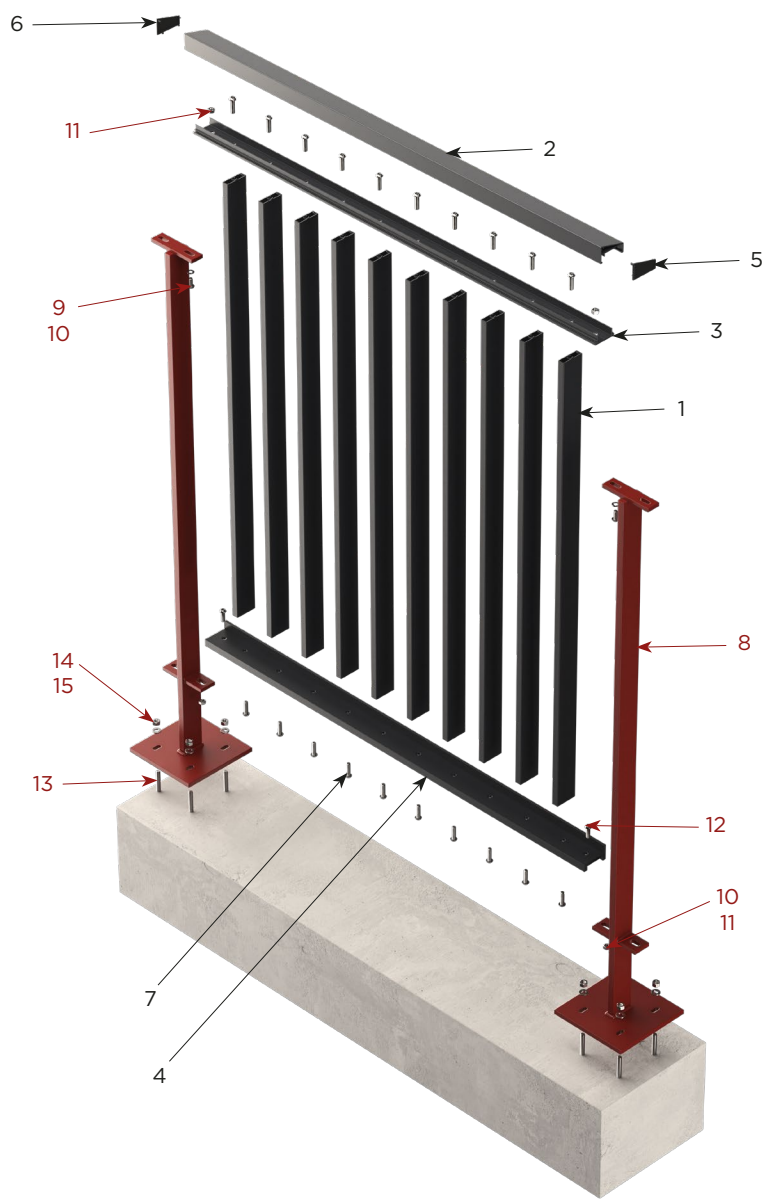
Using traditional mild steel fabrications and the patented Gateway integrated systems, this balcony finishes with...



Fixing	Standard Vertical Bar	Fixing	T-Shape Wind Mitigation Bar	Fixing	T-Shape Solid Panel Bar	Fixing	45 Degree Privacy Bar
Product Code	IBA	Product Code	IBB	Product Code	IBC	Product Code	IBD
MORE ON PAGES 4-5		MORE ON PAGES 6-7		MORE ON PAGES 8-9		MORE ON PAGES 10-11	



PRODUCT CODE LP



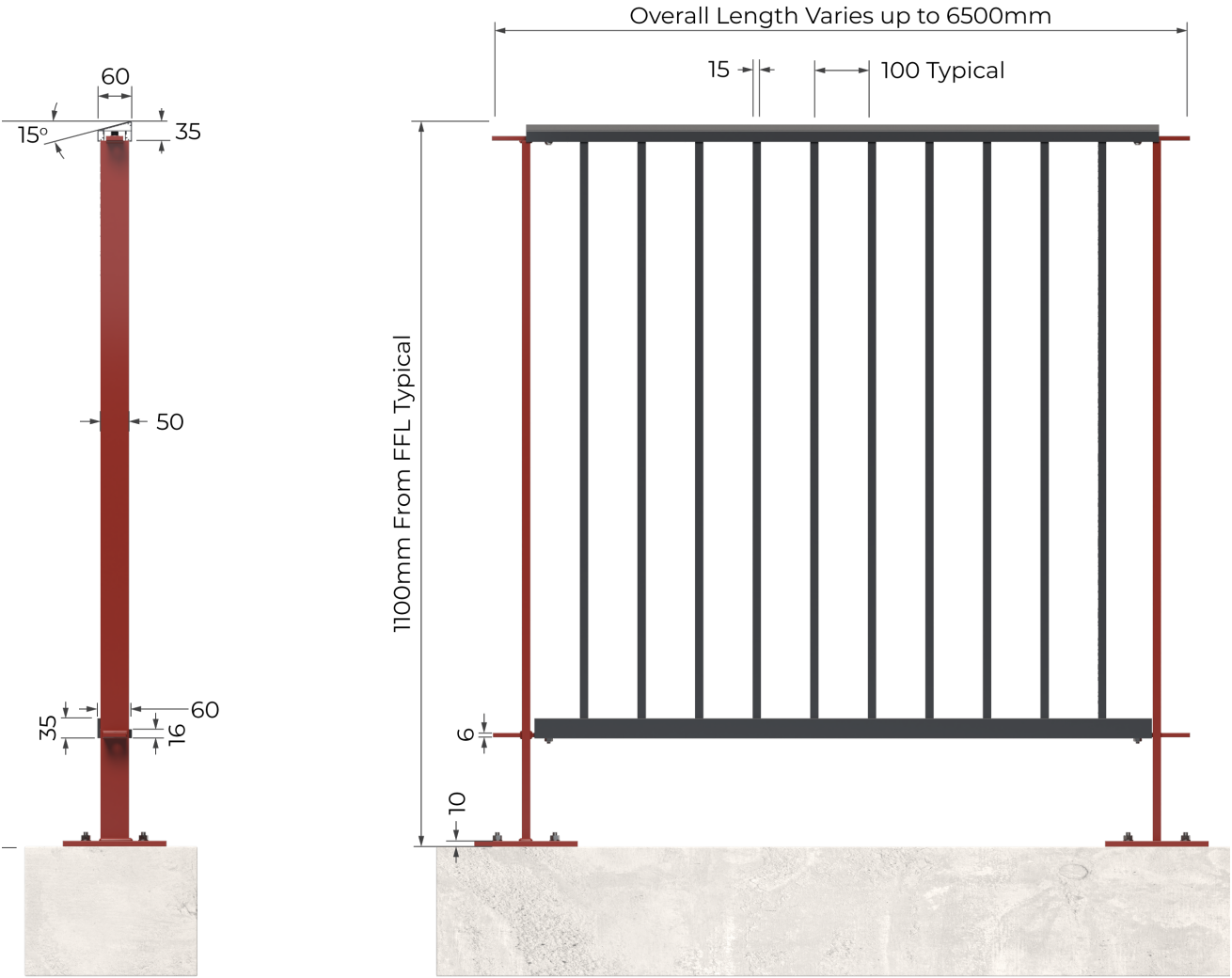
- EXAMPLE CONNECTION (not included)**
- (8) Mild Steel Post Typically 900-1100mm Centres
 - (9) M8x16 SS Bolt
 - (10) M8 Ss Washer
 - (11) M8 SS Nut
 - (12) M8x30 SS Bolt
 - (13) M10 8.8 Chemical Resin Anchor
 - (14) M10 Nut
 - (15) M10 Washer

SYSTEM COMPONENTS

PROFILES		
1	IBa	Infill Bar
2	HCa	Handrail Capping
3	HBa	Handrail Carrier
4	BTc	Base Track Light

FITTINGS		
5	CS2001	LH 60x35 Handrail End Cap
6	CS2002	RH 60x35 Handrail End Cap

FIXINGS		
7	CSF2008	M8x30 Torx Pan Taptite A2SS



SYSTEM FEATURES

Horizontal Line Load
0.74KN

Weight
<20kg per l/m

Fast Installation
Simple Adjustments

Fire Rated
A2-s1, d0

Coating
Qualicoat

SYSTEM CONNECTIONS

Connection Example
Universal Bracket

Connection Example
Bespoke



VANTAGE JULIET BALCONY SYSTEMS

Structurally engineered profiles make up a modular system which is fully compliant with BS8579:2020 and BS6180.

Top and bottom sloped profiles reduce pooling water and dirt build-up.



PRODUCT HIGHLIGHTS AT A GLANCE:

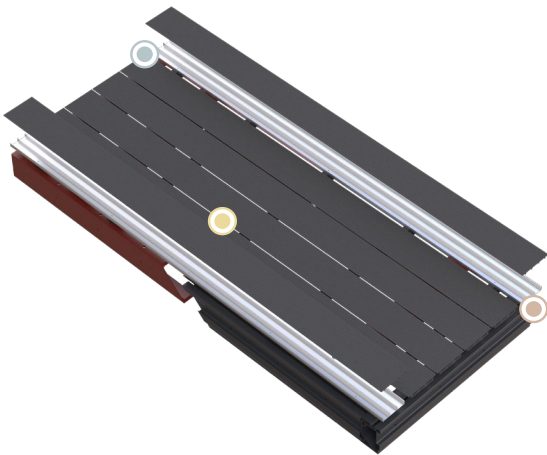
- Under 25kg per l/m
- Sloped Handrail - Finished in a Textured Paint
- No welds or visible fixings

VERSATILE DECKING SYSTEMS

Designed for durability and easy installation, our Versatile Elite decking systems offer open joints or channelled drainage at no extra cost – perfect to meet any project drainage requirements.

Patent pending removable top surface eliminates any risk of site damage when fitting a balcony system, saving time and unexpected costs.

For maximum cost efficiency, we can offer Versatile Light, the perfect board for remediation projects.



PRODUCT HIGHLIGHTS AT A GLANCE:

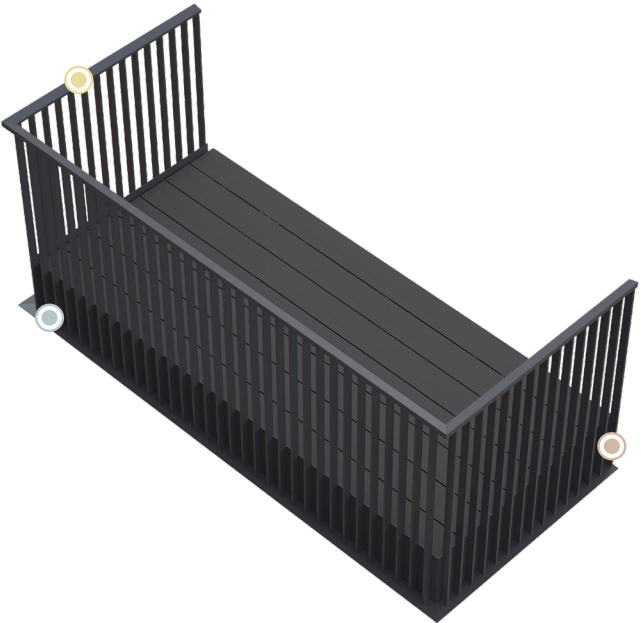
- Boards: A2 Class Non-Combustible
- Slip Resistant Decking Properties
- Connects to Steel Frame or Aluminium Chassis



COBALT GATEWAY



- ✓ Fabricated Steel Frame, OR
- ✓ Processed Aluminium Chassis
- ✓ Final Processing - less than 50 cuts
- ✓ Processed in 44 minutes per system
- ✓ Assembled in 1 hour per system
- ✓ No Sheet Metal
- ✓ Cost Efficient



PRODUCT HIGHLIGHTS AT A GLANCE:

- 30mm drip edge for BS8579:2020
- Balustrade assembly with no welds or visible fixings
- Interlocking soffits

YOUR GATEWAY READY BALCONY SYSTEMS



MF



PB



GT

HIGHLIGHTS AT A GLANCE:

- WEIGHT PER M2
75kg
-
- ASSEMBLY TIME
1 Hour



ENHANCING LIFE ON THE SKYLINE.

RYNO LTD

hello@rynosystems.com

+44 (0) 203 967 3500

rynosystems.com

RYNO HEAD OFFICE

Castlepoint,
Castle Way, Ellon
AB41 9RG

RYNO STUDIO

2 Sutton Lane
London
EC1M 5PU

RYNO ASHFORD OFFICE

The Cobalt Building,
1600 Eureka Park, Kent
TN25 4BF

FINISH STRONG