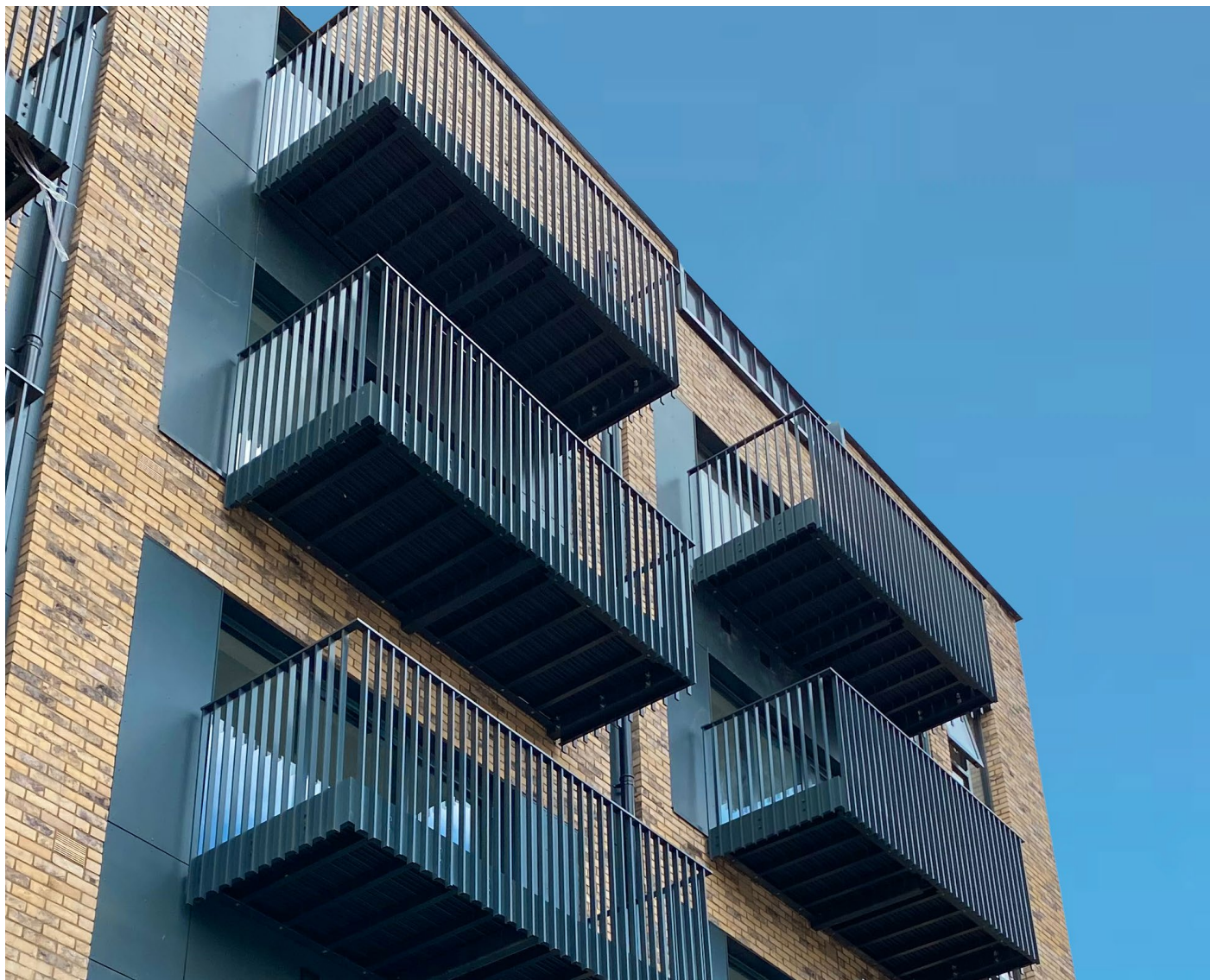


LINEAR LIGHT BALUSTRADE SYSTEM

A fully integrated, versatile balustrade system.



FINISH STRONG

Linear Light Balustrade System.

Introduction



Linear Light is a modular balustrade system designed to **integrate seamlessly** with any frame or building structure.



Linear Light Balustrade Systems are designed to match all other systems ensuring a perfect harmony of products on every project.

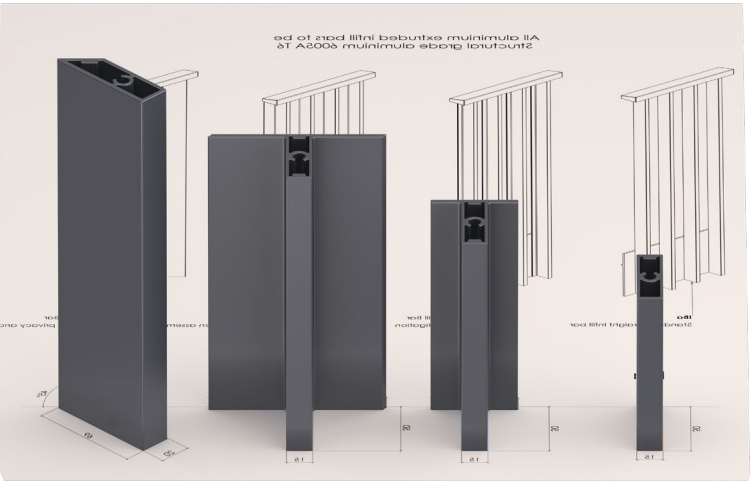
Side Mounted balustrade system to connect to steel frames, concrete slabs, or walkway parapets.

6mm Extruded aluminium fascia panels, available in either 300mm or 400mm high. Bespoke heights are available if needed.

Pre-designed first fix brackets to connection simple and cost effective.

BALUSTRADE OPTIONS

Solving wind mitigation, vision privacy, or simply just complementing design aesthetics, there is a variety of infill bar options available to suit any requirement.



RANGE OF COLOURS

Allowing for architectural flair, all profiles are powder coated individually, giving options for 1 solid colour, or multiples.



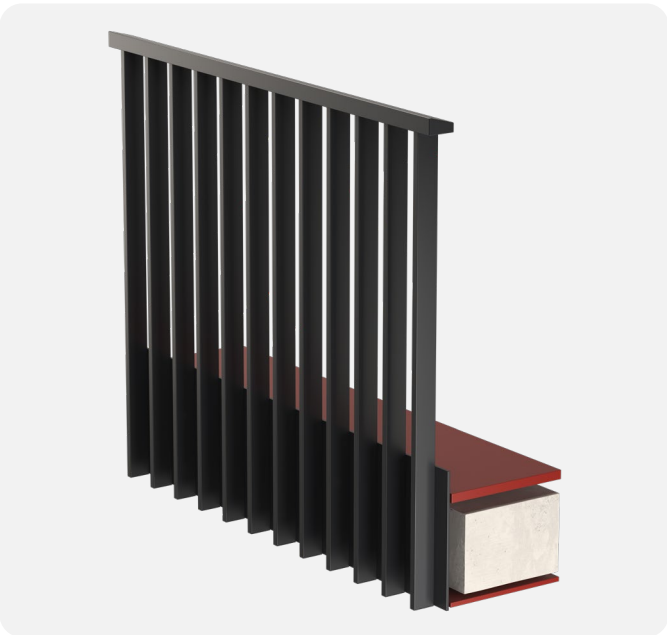
Linear Light Balustrade System Types.

Standard Scenarios



Fixing	Steel Face Fix
Product Code	LL-SF

MORE ON PAGES 4-5



Fixing	Concrete Face Fix
Product Code	LL-CF

MORE ON PAGES 6-7



Fixing	Parapet Face Fix
Product Code	LL-PF

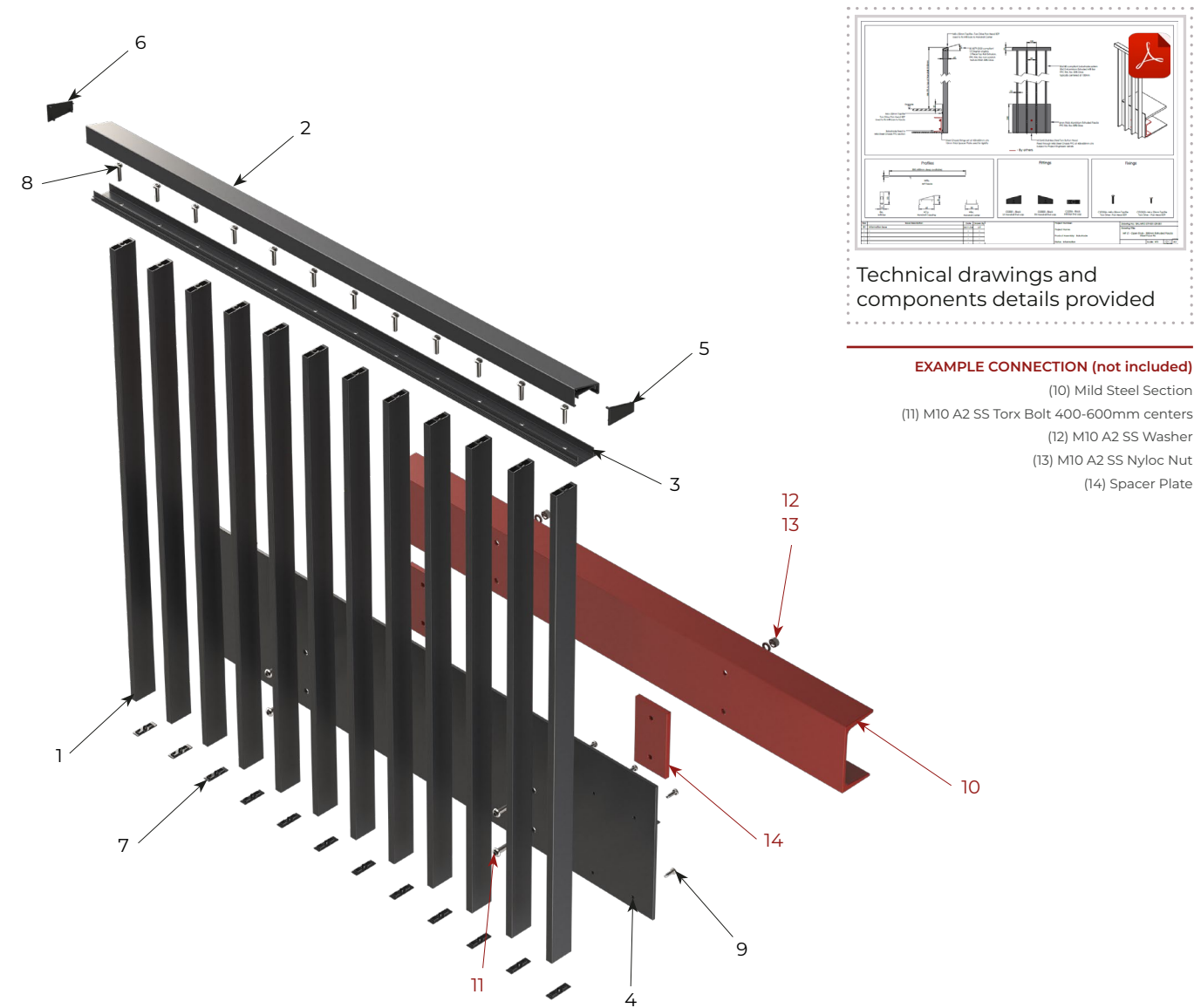
MORE ON PAGES 8-9

Steel Face Fix.

Product Overview



PRODUCT CODE LL-SF



SYSTEM COMPONENTS

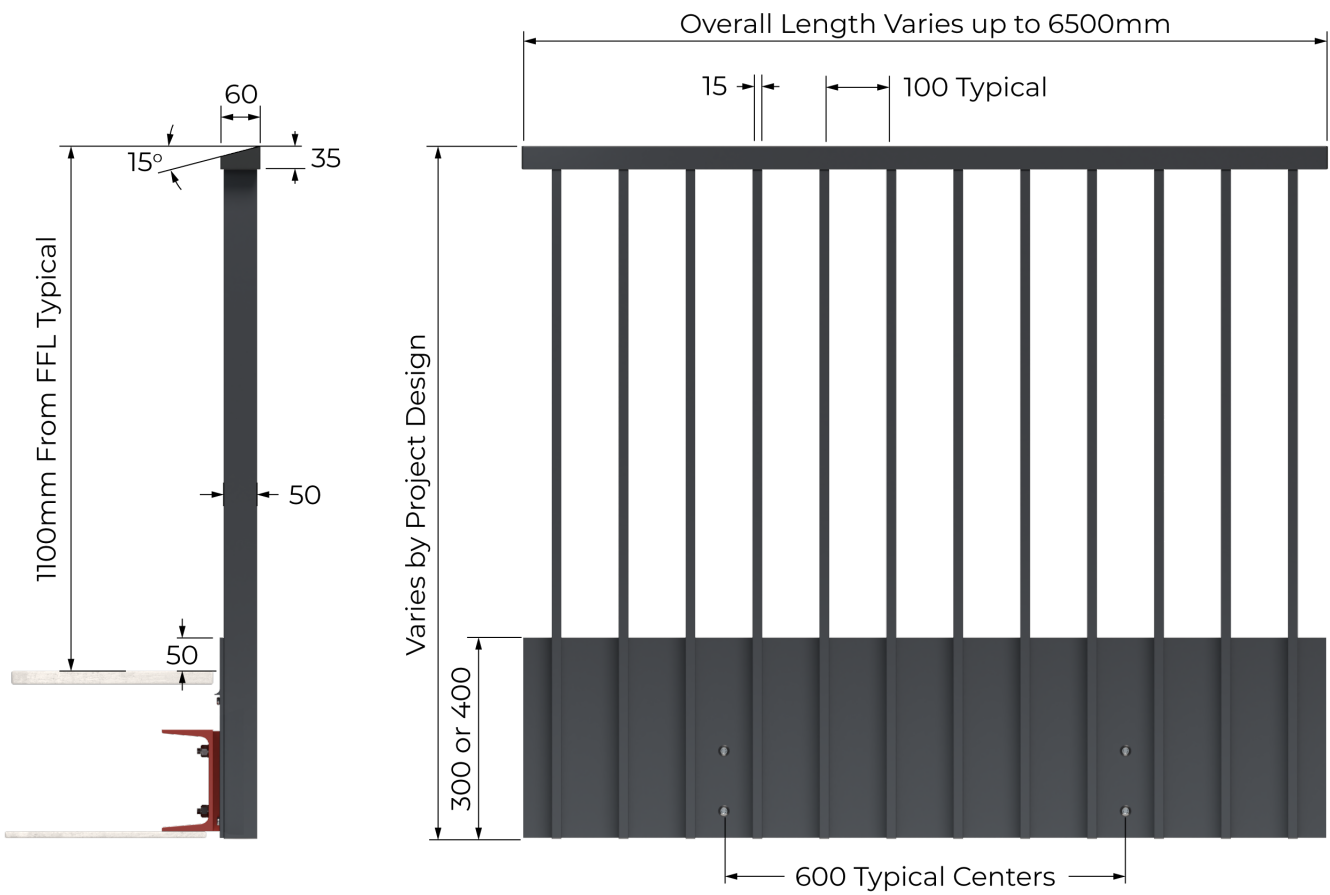
PROFILES		
1	IBa	Infill Bar
2	HCa	Handrail Capping
3	HBa	Handrail Base Carrier
4	MFb/MFc	Fascia

FITTINGS			
5	CS2001	LH 60x35 Handrail End Cap	
6	CS2002	RH 60x35 Handrail End Cap	
7	CS2006	Infill Bar End Cap	

FIXINGS			
8	CSF2006	M8x30mm Torx Pan Taptite	
9	CSF2003	M6x20mm Torx Pan Taptite	

Steel Face Fix.

Typical System Features



SYSTEM FEATURES

Horizontal Line Load
0.74KN

Weight
<20kg per l/m

Fast Installation
Simple Adjustments

Horizontal tolerance
Unlimited

Coating
Qualicoat

Fire Rated
A2-s1, d0

SYSTEM CONNECTIONS

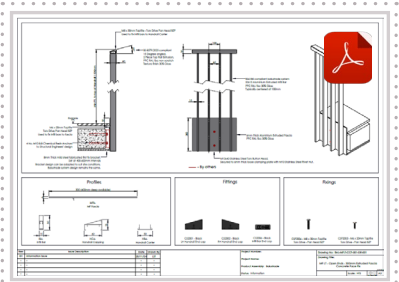
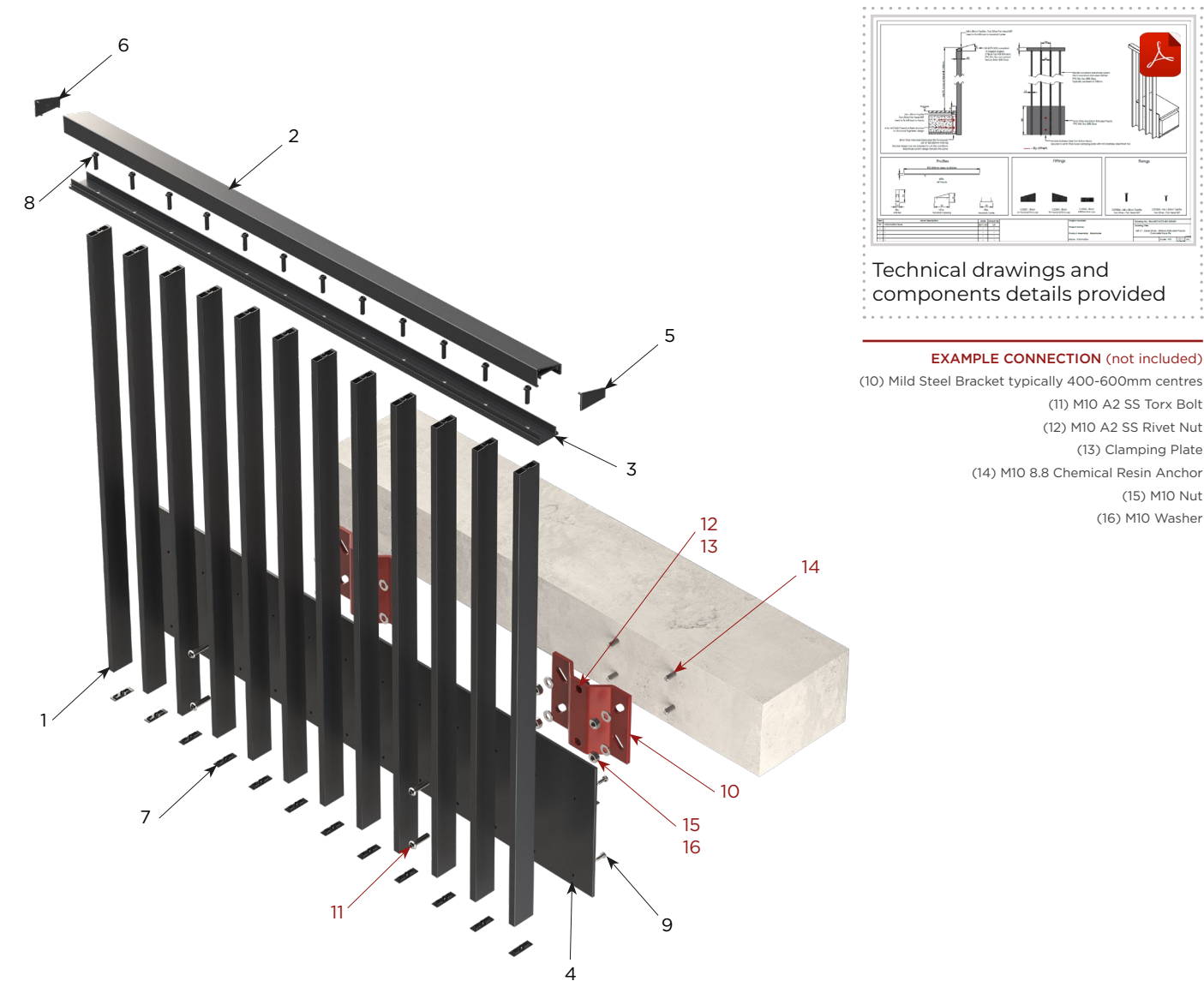
Connection Example
Mild Steel PFC

Connection Example
Mild Steel UC

Connection Example
Bespoke



PRODUCT CODE LL-CF



Technical drawings and components details provided

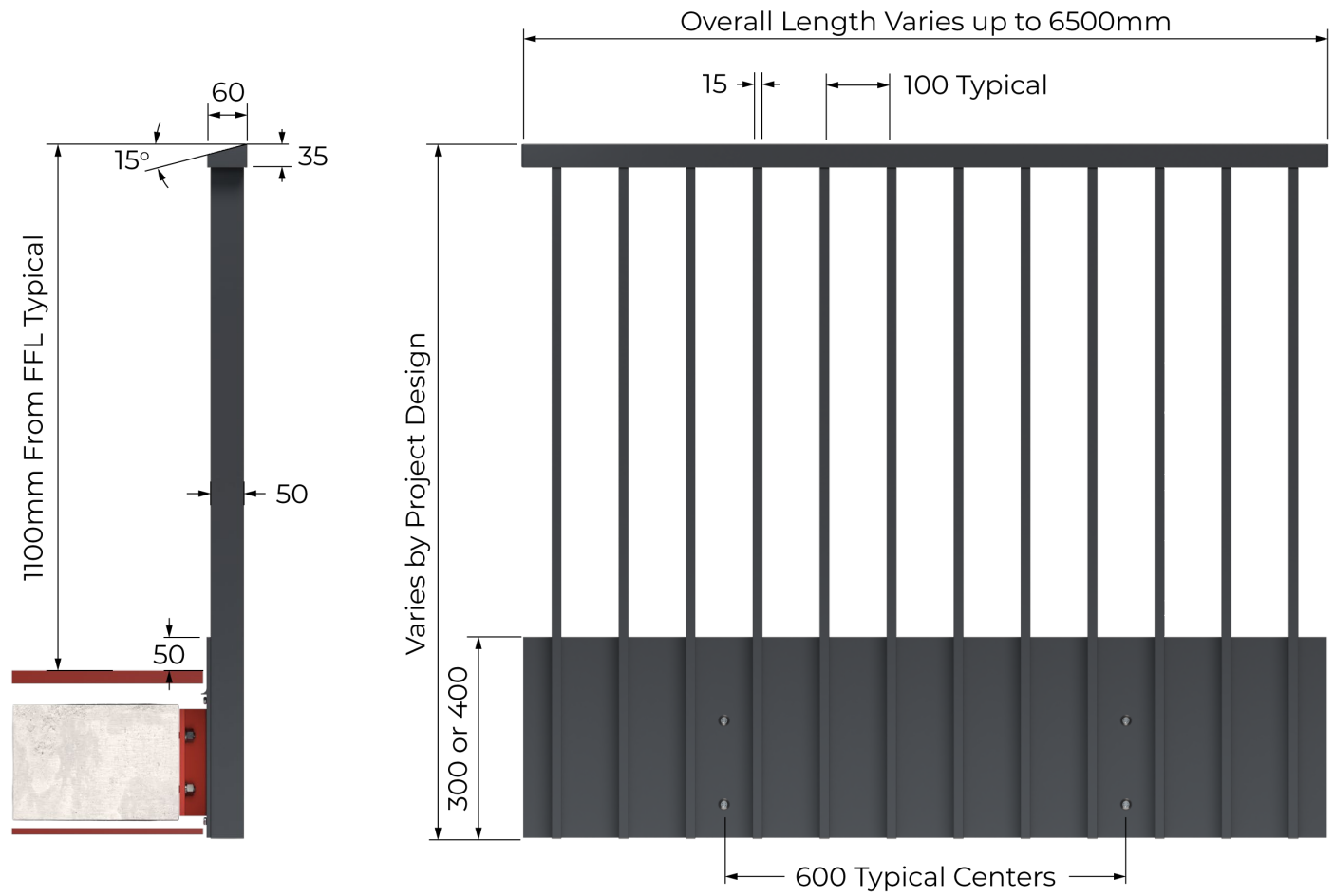
- EXAMPLE CONNECTION (not included)**
- (10) Mild Steel Bracket typically 400-600mm centres
 - (11) M10 A2 SS Torx Bolt
 - (12) M10 A2 SS Rivet Nut
 - (13) Clamping Plate
 - (14) M10 8.8 Chemical Resin Anchor
 - (15) M10 Nut
 - (16) M10 Washer

SYSTEM COMPONENTS

PROFILES		
1	IBa	Infill Bar
2	HCa	Handrail Capping
3	HBa	Handrail Base Carrier
4	MFb/MFc	Fascia

FITTINGS			
5	CS2001	LH 60x35 Handrail End Cap	
6	CS2002	RH 60x35 Handrail End Cap	
7	CS2006	Infill Bar End Cap	

FIXINGS			
8	CSF2006	M8x30mm Torx Pan Taptite	
9	CSF2003	M6x20mm Torx Pan Taptite	



SYSTEM FEATURES

Horizontal Line Load
0.74KN

Weight
<20kg per l/m

Fast Installation
Simple Adjustments

Horizontal tolerance
Unlimited

Coating
Qualicoat

Fire Rated
A2-s1, d0

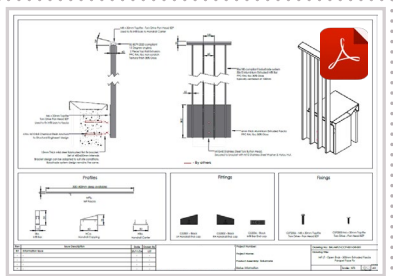
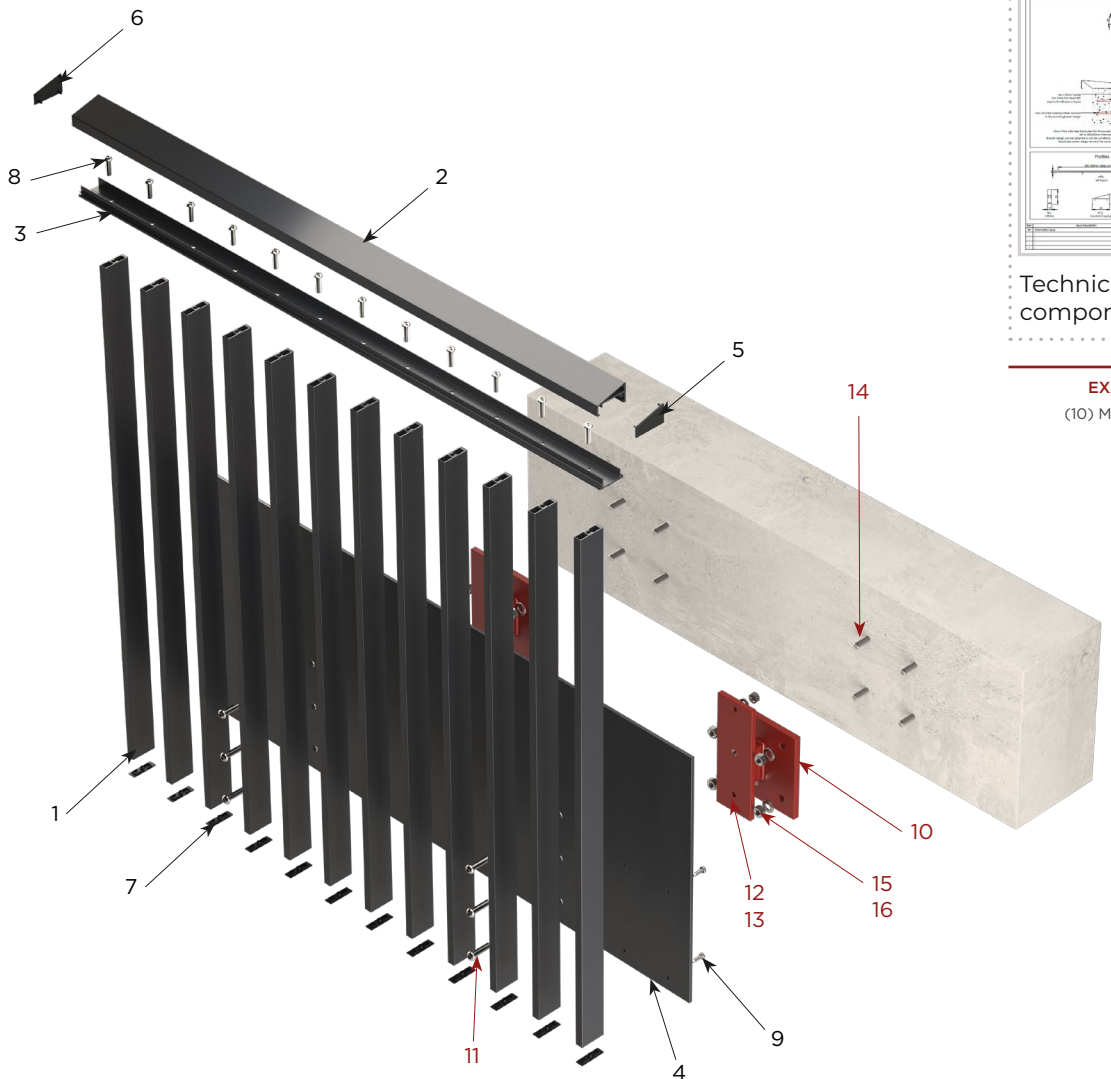
SYSTEM CONNECTIONS

Connection Example
Mild Steel Bracket

Connection Example
Bespoke



PRODUCT CODE LL-PF



Technical drawings and components details provided

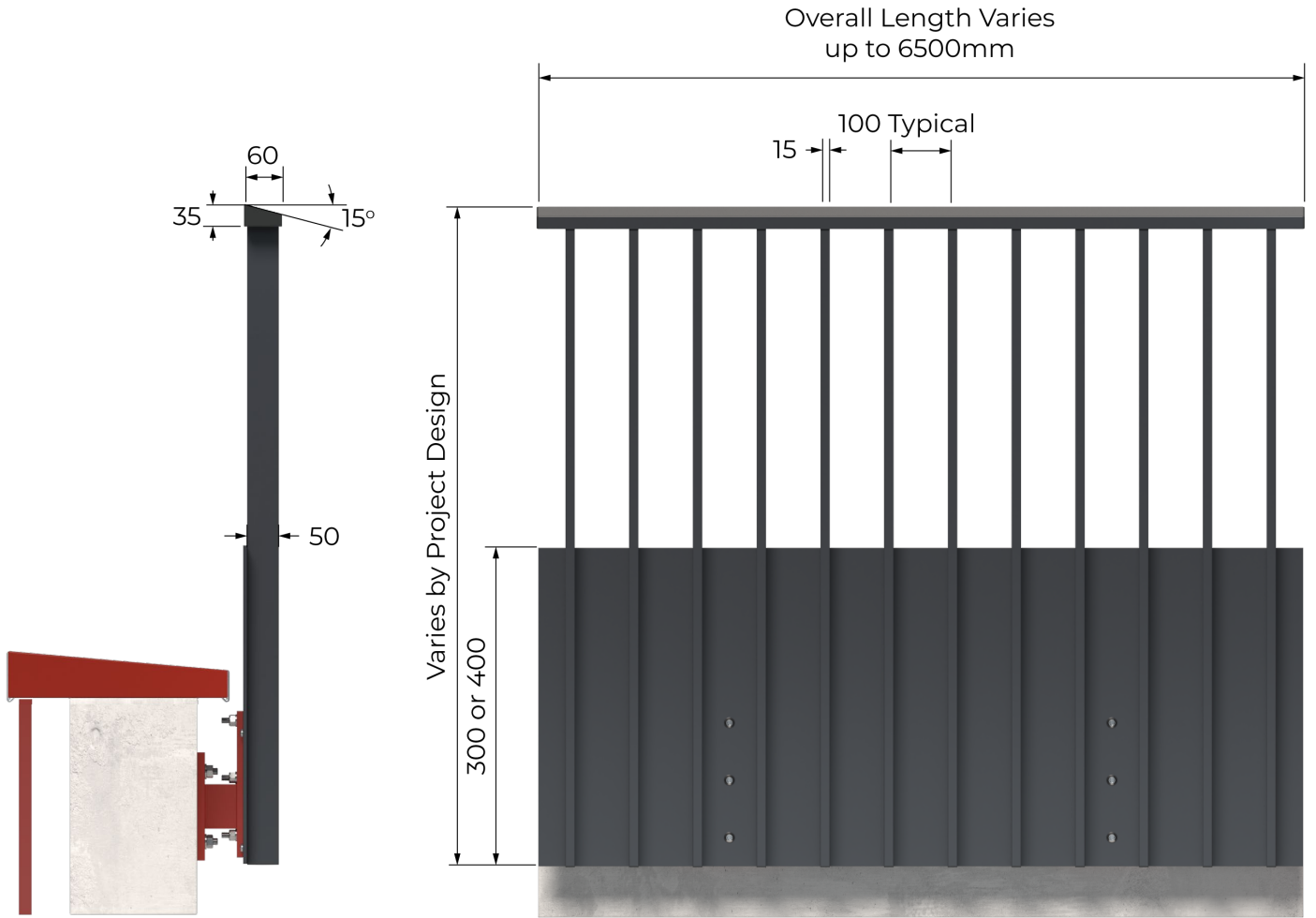
- EXAMPLE CONNECTION (not included)**
- (10) Mild Steel Bracket typically 400-600mm centers
 - (11) M10 A2 SS Torx Bolt
 - (12) M10 A2 SS Washer
 - (13) M10 A2 SS Nyloc Nut
 - (14) M10 8.8 Chemical Resin Anchor
 - (15) M10 Nut
 - (16) M10 Washer

SYSTEM COMPONENTS

PROFILES		
1	IBa	Infill Bar
2	HCa	Handrail Capping
3	HBa	Handrail Base Carrier
4	MFb/MFc	Fascia

FITTINGS		
5	CS2001	LH 60x35 Handrail End Cap
6	CS2002	RH 60x35 Handrail End Cap
7	CS2006	Infill Bar End Cap

FIXINGS		
8	CSF2006	M8x30mm Torx Pan Taptite
9	CSF2003	M6x20mm Torx Pan Taptite



SYSTEM FEATURES

Horizontal Line Load
0.74KN

Weight
<20kg per l/m

Fast Installation
Simple Adjustments

Horizontal tolerance
Unlimited

Coating
Qualicoat

Fire Rated
A2-s1, d0

SYSTEM CONNECTIONS

Connection Example
Mild Steel Bracket

Connection Example
Bespoke



VANTAGE JULIET BALCONY SYSTEMS

Structurally engineered profiles make up a modular system which is fully compliant with BS8579:2020 and BS6180.

Top and bottom sloped profiles reduce pooling water and dirt build-up.



PRODUCT HIGHLIGHTS AT A GLANCE:

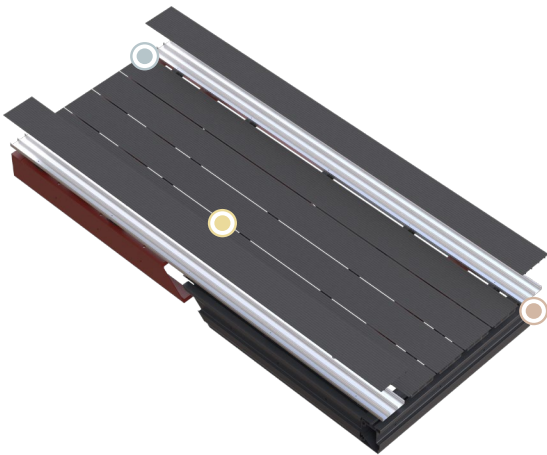
- Under 25kg per l/m
- Sloped Handrail - Finished in a Textured Paint
- No welds or visible fixings

VERSATILE DECKING SYSTEMS

Designed for durability and easy installation, our Versatile Elite decking systems offer open joints or channelled drainage at no extra cost – perfect to meet any project drainage requirements.

Patent pending removable top surface eliminates any risk of site damage when fitting a balcony system, saving time and unexpected costs.

For maximum cost efficiency, we can offer Versatile Light, the perfect board for remediation projects.



PRODUCT HIGHLIGHTS AT A GLANCE:

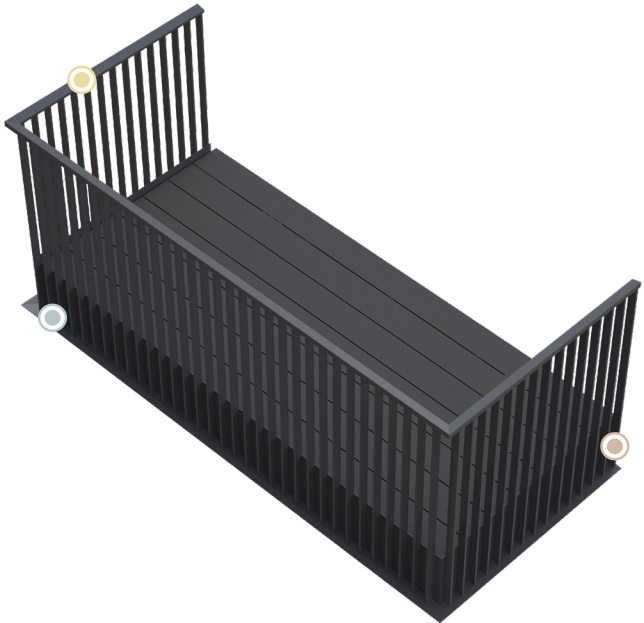
- Boards: A2 Class Non-Combustible
- Slip Resistant Decking Properties
- Connects to Steel Frame or Aluminium Chassis



GATEWAY



- ✓ Fabricated Steel Frame, OR
- ✓ Processed Aluminium Chassis
- ✓ Final processing - less than 50 cuts
- ✓ Processed in 44 minutes per system
- ✓ Assembled in 1 hour per system
- ✓ No Sheet Metal
- ✓ Cost Efficient



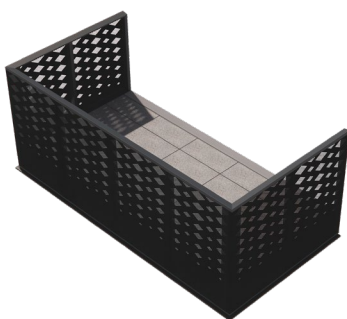
PRODUCT HIGHLIGHTS AT A GLANCE:

- 30mm drip edge for BS8579:2020
- Balustrade assembly with no welds or visible fixings
- Interlocking soffits

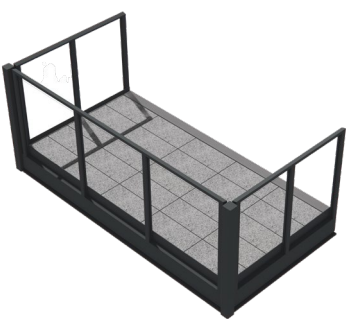
YOUR GATEWAY READY BALCONY SYSTEMS



MF



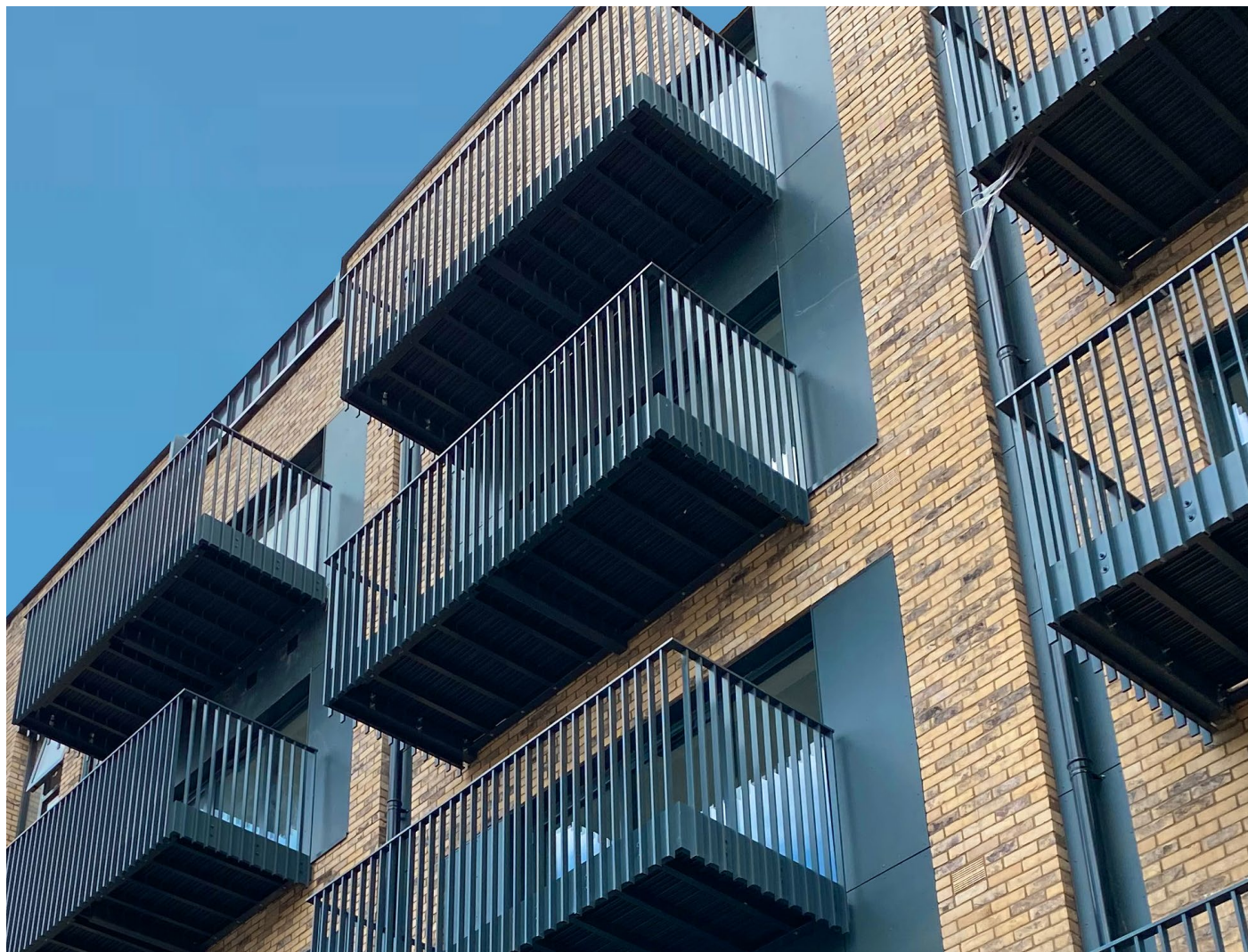
PB



GT

HIGHLIGHTS AT A GLANCE:

- WEIGHT PER M2
75kg
- ASSEMBLY TIME
1 Hour



ENHANCING LIFE ON THE SKYLINE.

RYNO LTD

hello@rynosystems.com

+44 (0) 203 967 3500

rynosystems.com

RYNO HEAD OFFICE

Castlepoint,
Castle Way, Ellon
AB41 9RG

RYNO STUDIO

2 Sutton Lane
London
EC1M 5PU

RYNO ASHFORD OFFICE

The Cobalt Building,
1600 Eureka Park, Kent
TN25 4BF

FINISH STRONG