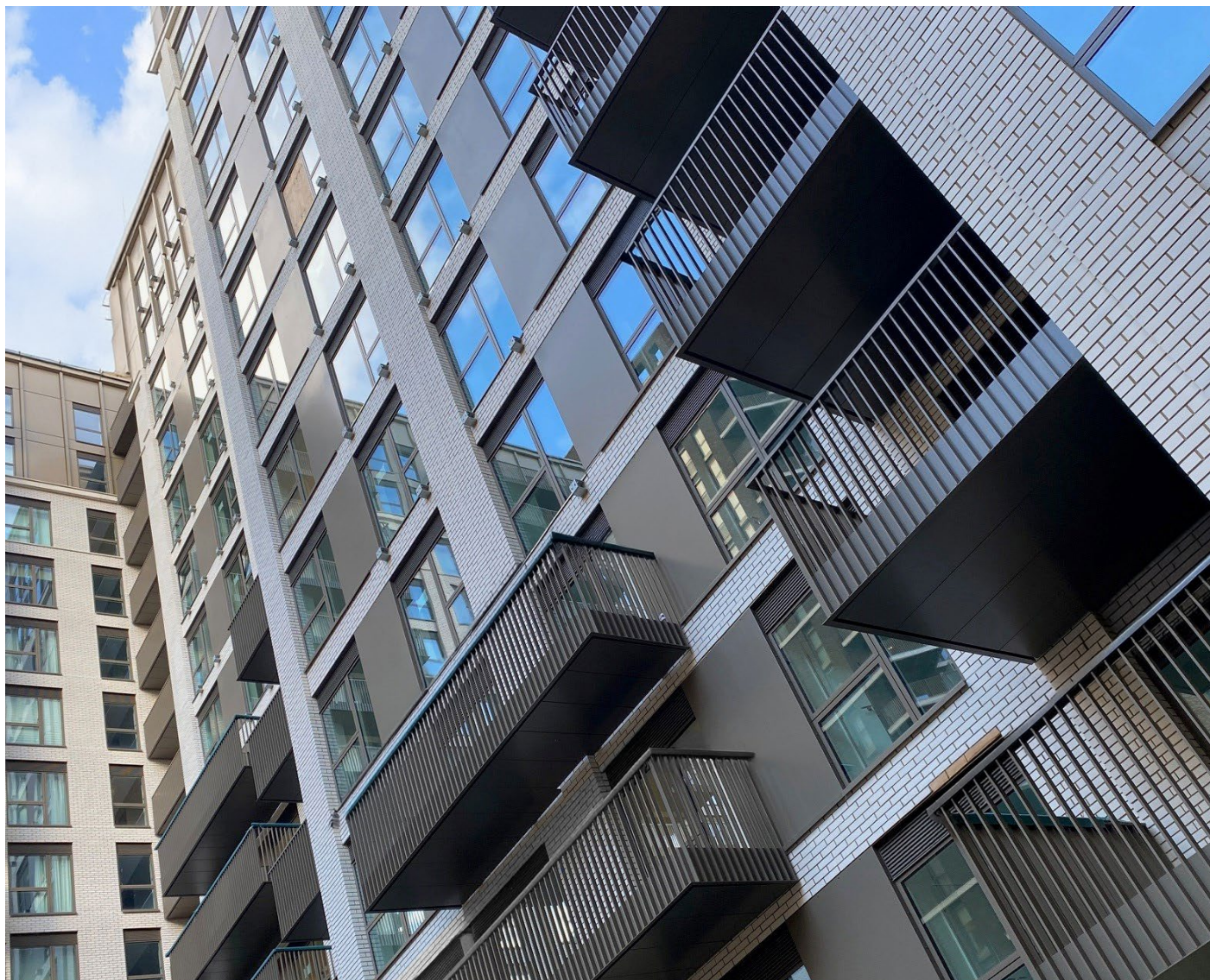


LINEAR FRAME

BALUSTRADE SYSTEM

A fully integrated, versatile balustrade system.



FINISH STRONG

Linear Frame Balustrade System.

Introduction



Linear Frame is a modular balustrade system designed to **integrate seamlessly** with any frame or building structure.



Linear Frame Balustrade Systems are designed to match all other systems ensuring a perfect harmony of products on every project.

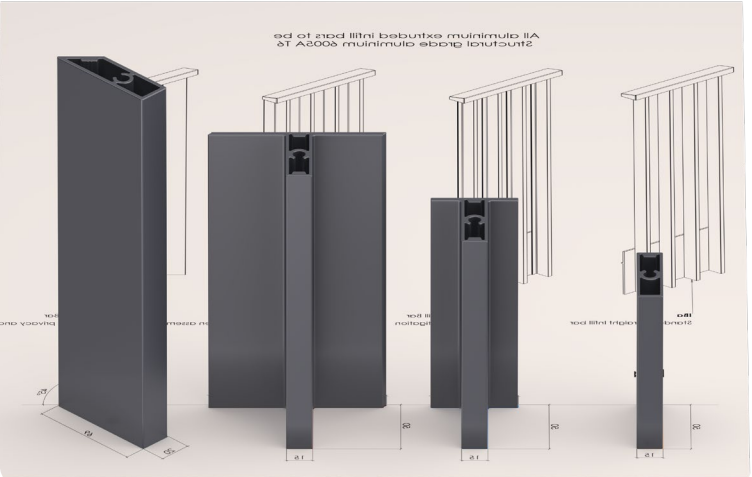
Side Mounted balustrade system to connect to steel frames, concrete slabs, or walkway parapets.

6mm Extruded aluminium fascia panels, with 7 degree sloped base, available in either 300mm or 400mm high. Bespoke heights are available if needed.

Pre-designed first fix brackets to connection simple and cost effective.

BALUSTRADE OPTIONS

Solving wind mitigation, vision privacy, or simply just complementing design aesthetics, there is a variety of infill bar options available to suit any requirement.



RANGE OF COLOURS

Allowing for architectural flair, all profiles are powder coated individually, giving options for 1 solid colour, or multiples.



Linear Frame Balustrade System Types.

Standard Scenarios



Fixing	Steel Face Fix
Product Code	L-FR-SF

MORE ON PAGES 4-5



Fixing	Concrete Face Fix
Product Code	L-FR-CF

MORE ON PAGES 6-7



Fixing	Upstand Fix
Product Code	L-FR-UF

MORE ON PAGES 8-9



Fixing	Parapet Face Fix
Product Code	L-FR-PF

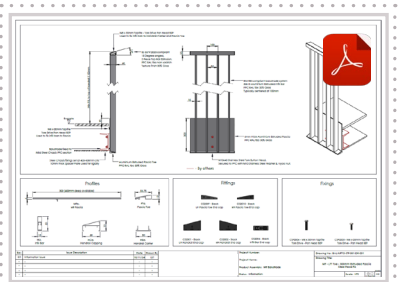
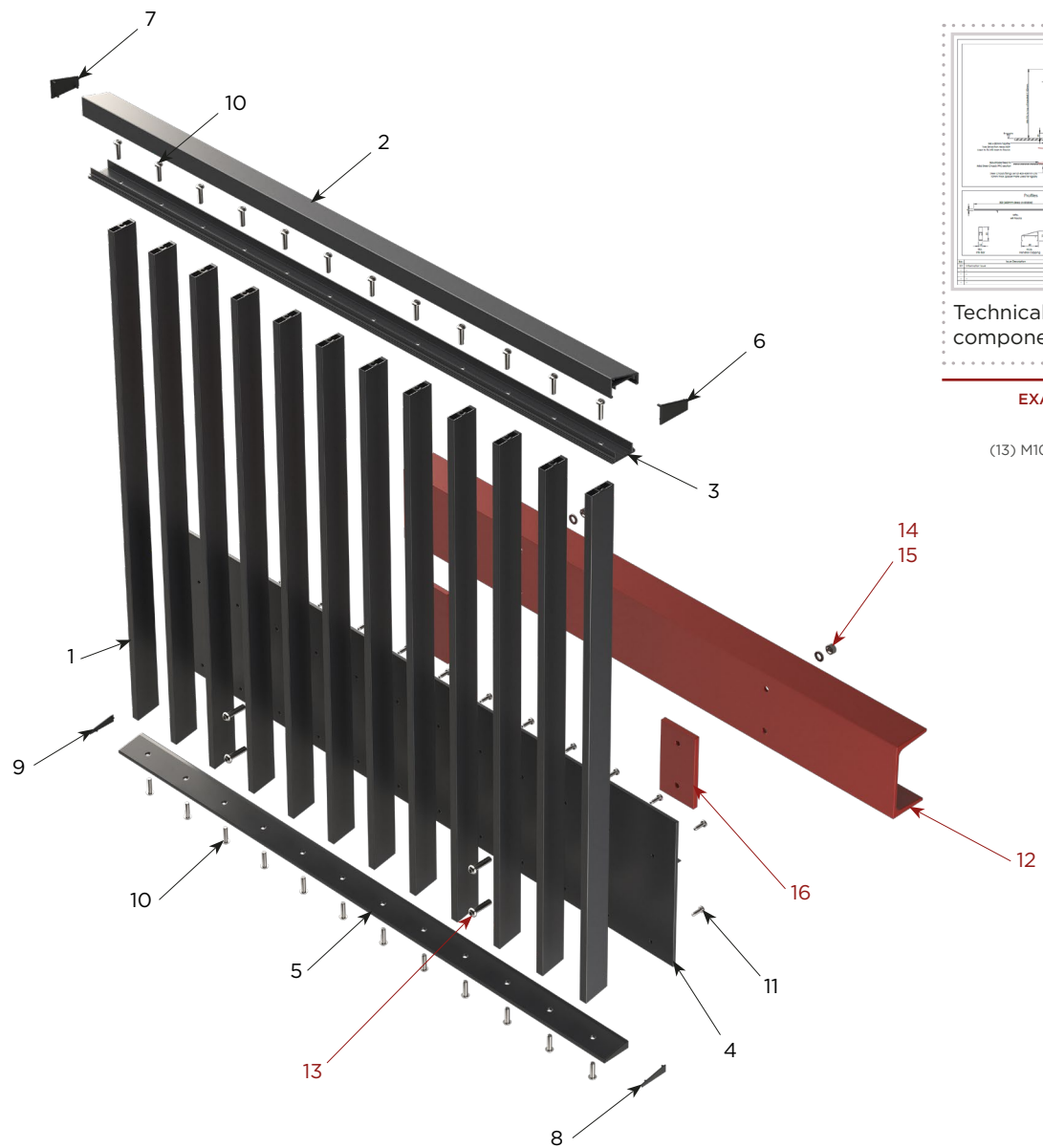
MORE ON PAGES 10-11

Steel Face Fix.

Product Overview



PRODUCT CODE L-FR-SF



Technical drawings and components details provided

EXAMPLE CONNECTION (not included)

- (12) Mild Steel Section
- (13) M10 A2 SS Torx Bolt 400-600mm centres
- (14) M10 A2 SS Washer
- (15) M10 A2 SS Nyloc Nut
- (16) Spacer Plate

SYSTEM COMPONENTS

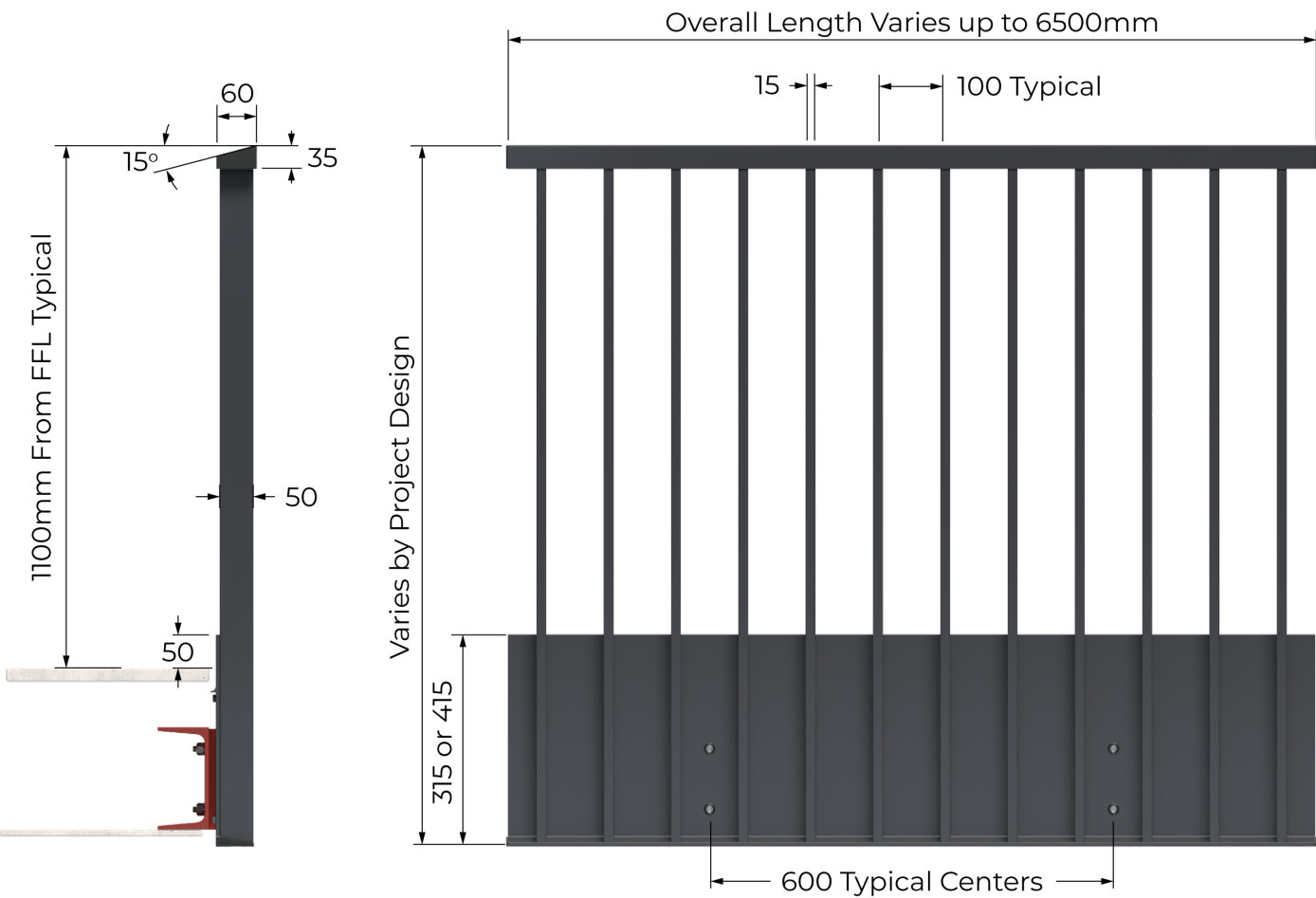
PROFILES		
1	IBa	Infill Bar
2	HCa	Handrail Capping
3	HBa	Handrail Base Carrier
4	MFb/MFc	Fascia
5	FTa	Fascia Toe

FITTINGS			
6	CS2001	LH 60x35 Handrail End Cap	
7	CS2002	RH 60x35 Handrail End Cap	
8	CS2009	LH Toe End Cap	
9	CS2010	RH Toe End Cap	

FIXINGS			
10	CSF2006	M8x30mm Torx Pan Taptite	
11	CSF2003	M6x20mm Torx Pan Taptite	

Steel Face Fix.

Typical System Features



SYSTEM FEATURES

Horizontal Line Load
0.74KN

Weight
<20kg per l/m

Fast Installation
Simple Adjustments

Horizontal tolerance
Unlimited

Coating
Qualicoat

Fire Rated
A2-s1, d0

SYSTEM CONNECTIONS

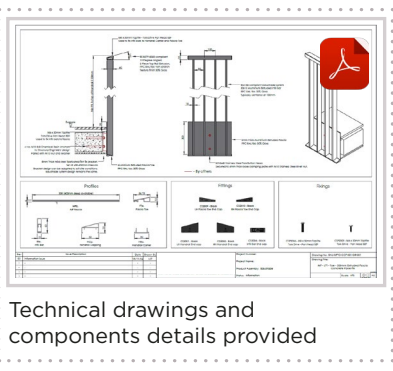
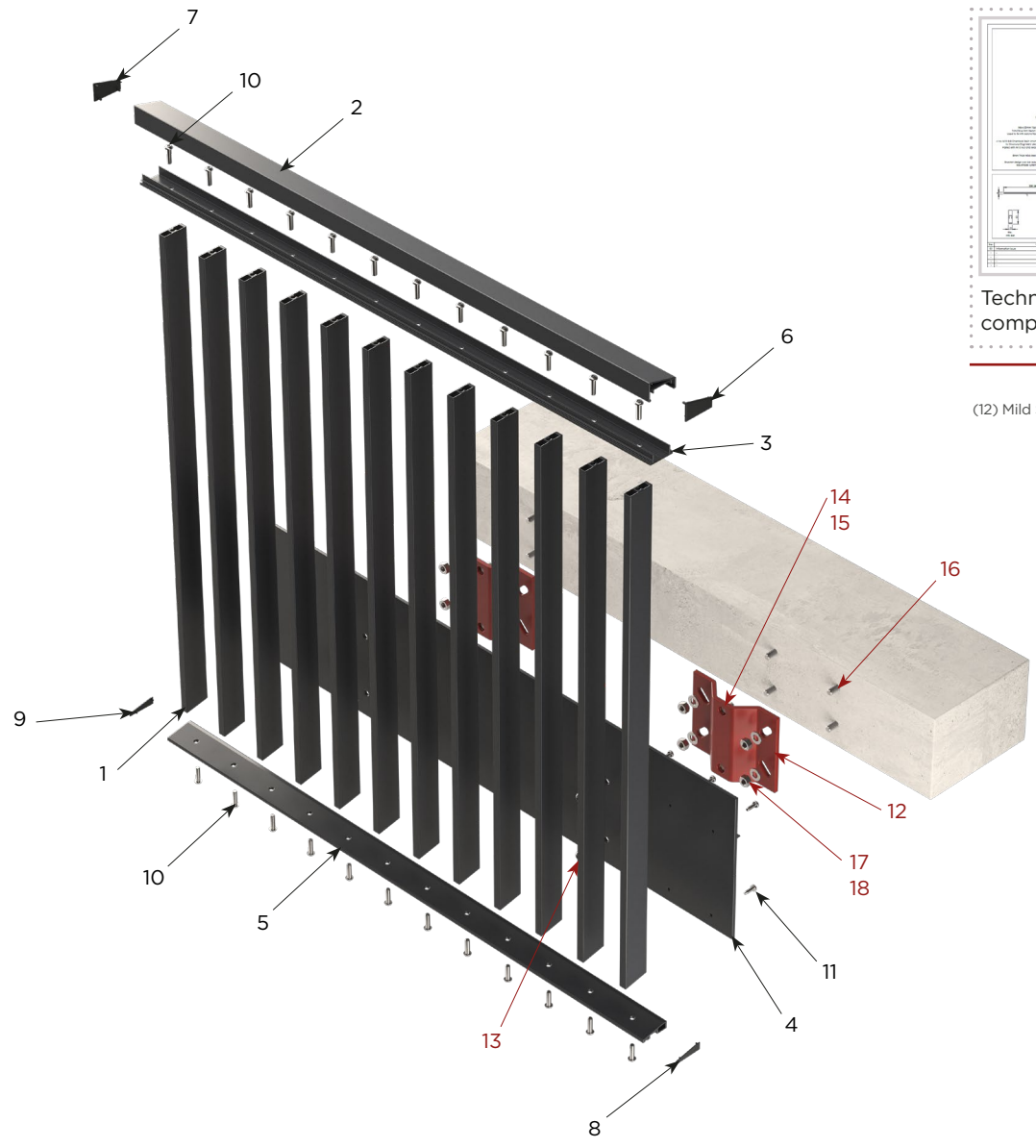
Connection Example
Mild Steel PFC

Connection Example
Mild Steel UC

Connection Example
Bespoke



PRODUCT CODE **L-FR-CF**



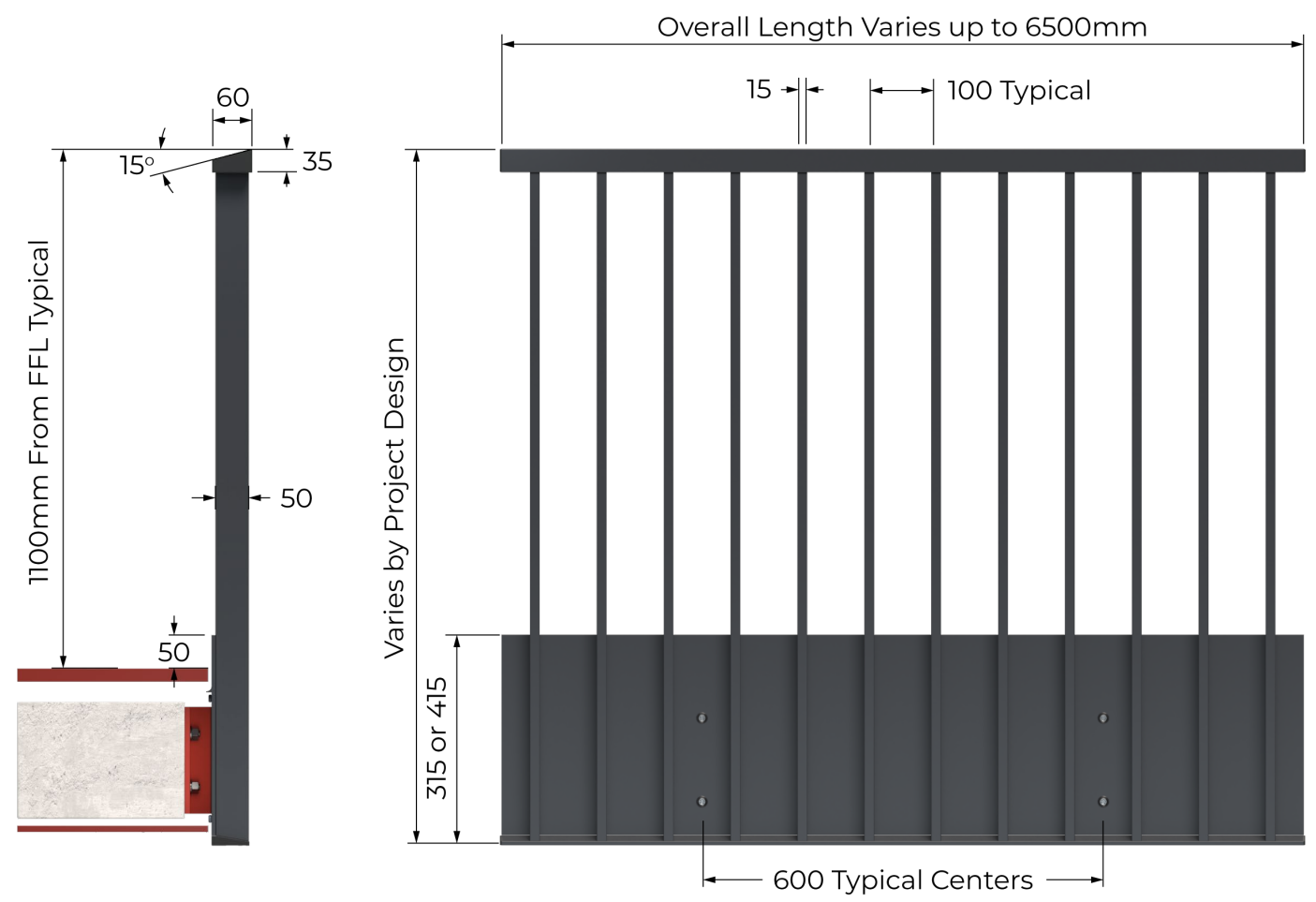
- EXAMPLE CONNECTION (not included)**
- (12) Mild Steel Bracket Typically 400-600mm Centres
 - (13) M10 A2 SS Torx Bolt
 - (14) M10 A2 SS Rivet Nut
 - (15) Clamping Plate
 - (16) M10 8.8 Chemical Resin Anchor
 - (17) M10 Nut
 - (18) M10 Washer

SYSTEM COMPONENTS

PROFILES		
1	IBa	Infill Bar
2	HCa	Handrail Capping
3	HBa	Handrail Base Carrier
4	MFb/MFc	Fascia
5	FTa	Fascia Toe

FITTINGS			
6	CS2001	LH 60x35 Handrail End Cap	
7	CS2002	RH 60x35 Handrail End Cap	
8	CS2009	LH Toe End Cap	
9	CS2010	RH Toe End Cap	

FIXINGS			
10	CSF2006	M8x30mm Torx Pan Taptite	
11	CSF2003	M6x20mm Torx Pan Taptite	



SYSTEM FEATURES

Horizontal Line Load
0.74KN

Weight
<20kg per l/m

Fast Installation
Simple Adjustments

Horizontal tolerance
Unlimited

Coating
Qualicoat

Fire Rated
A2-s1, d0

SYSTEM CONNECTIONS

Connection Example
Mild Steel Bracket

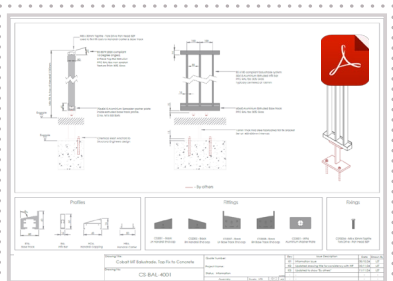
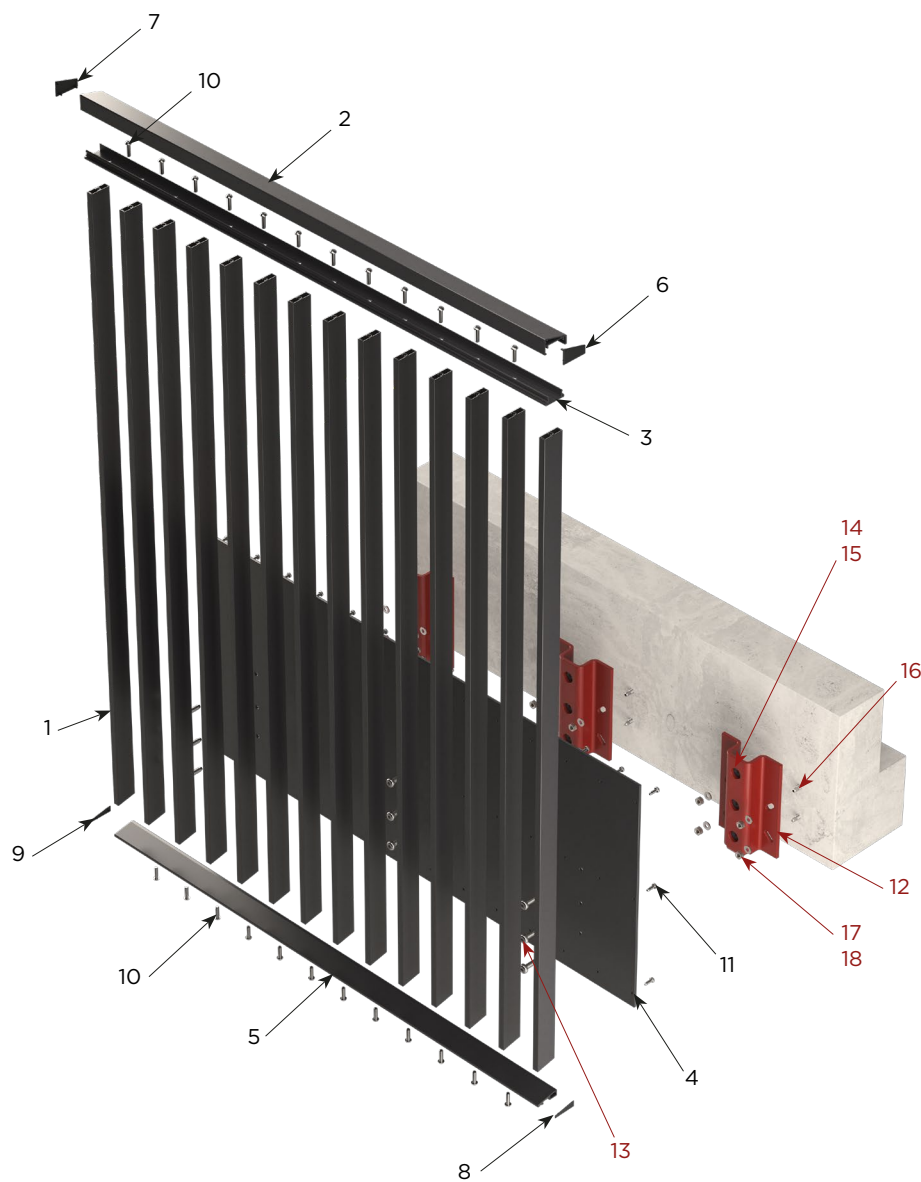
Connection Example
Bespoke

Upright Fix.

Product Overview



PRODUCT CODE L-FR-UF



Technical drawings and components details provided

EXAMPLE CONNECTION (not included)

- (12) Mild Steel Bracket Typically 400-600mm Centres
- (13) M10 A2 Ss Torx Bolt
- (14) M10 A2 Ss Rivet Nut
- (15) Clamping Plate
- (16) M10 8.8 Chemical Resin Anchor
- (17) M10 Nut
- (18) M10 Washer

SYSTEM COMPONENTS

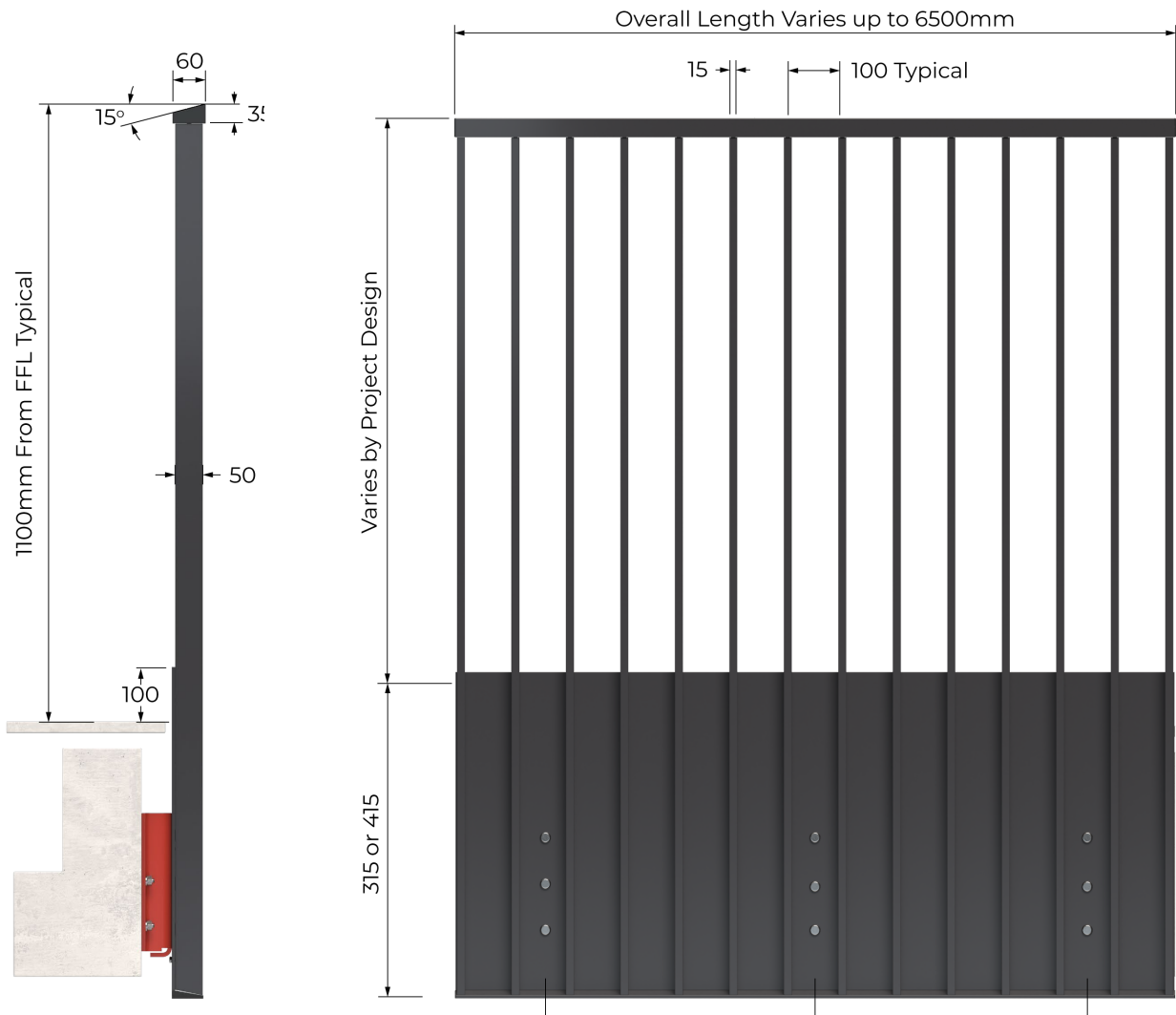
PROFILES		
1	IBa	Infill Bar
2	HCa	Handrail Capping
3	HBa	Handrail Base Carrier
4	MFb/MFc	Fascia
5	FTa	Fascia Toe

FITTINGS			
6	CS2001	LH 60x35 Handrail End Cap	
7	CS2002	RH 60x35 Handrail End Cap	
8	CS2009	LH Toe End Cap	
9	CS2010	RH Toe End Cap	

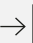
FIXINGS			
10	CSF2006	M8x30mm Torx Pan Taptite	
11	CSF2003	M6x20mm Torx Pan Taptite	

Upright Fix.


Typical System Features




SYSTEM FEATURES



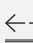
Horizontal Line Load
0.74kN




Weight
<20kg per l/m




Fast Installation
Simple Adjustments



Horizontal tolerance
Unlimited




Coating
Qualicoat




Fire Rated
A2-s1, d0

SYSTEM CONNECTIONS



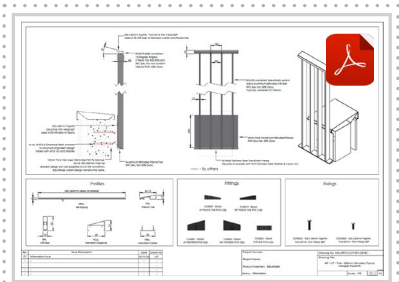
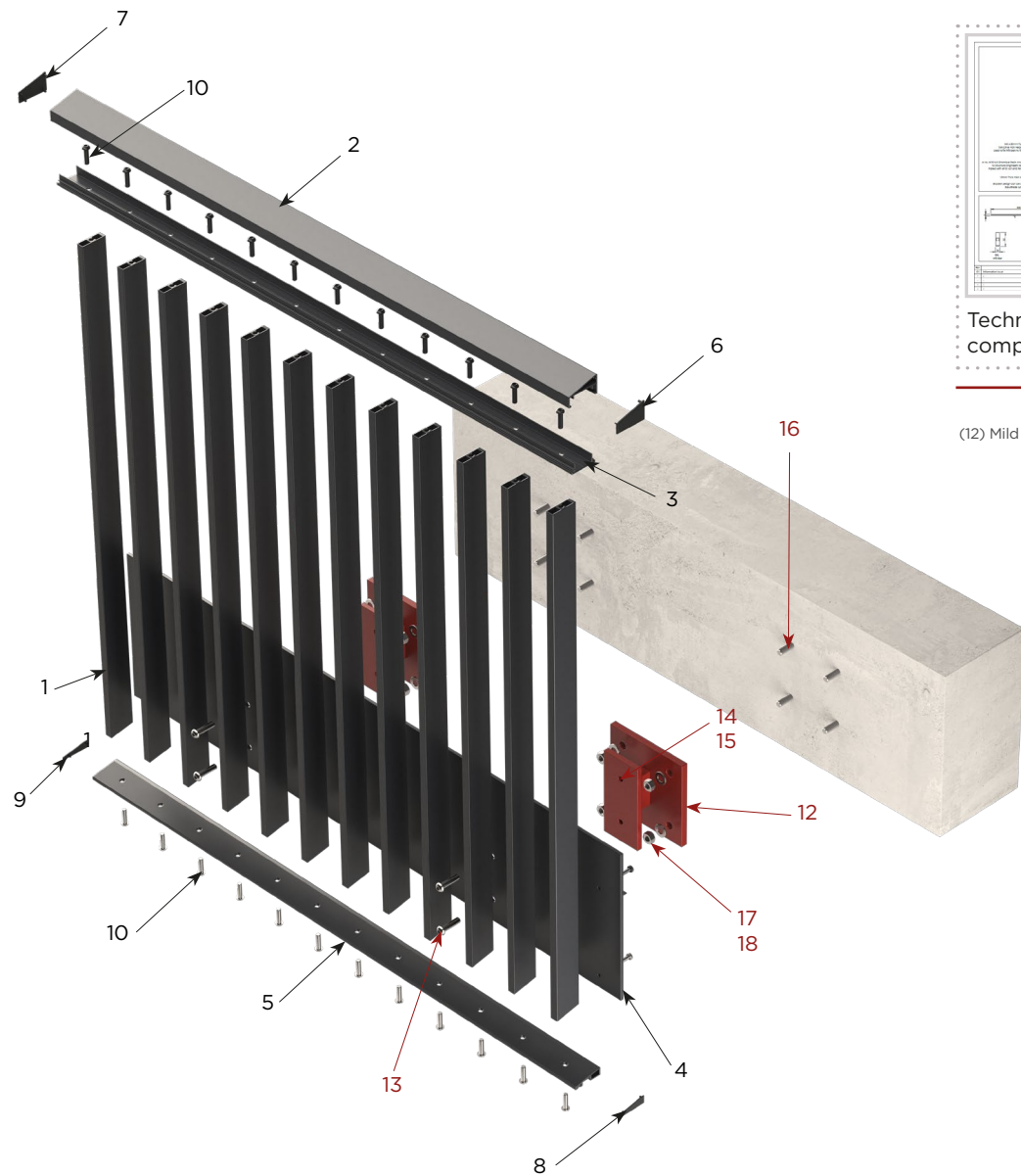
Connection Example
Mild Steel Bracket



Connection Example
Bespoke



PRODUCT CODE L-FR-PF



Technical drawings and components details provided

EXAMPLE CONNECTION (not included)

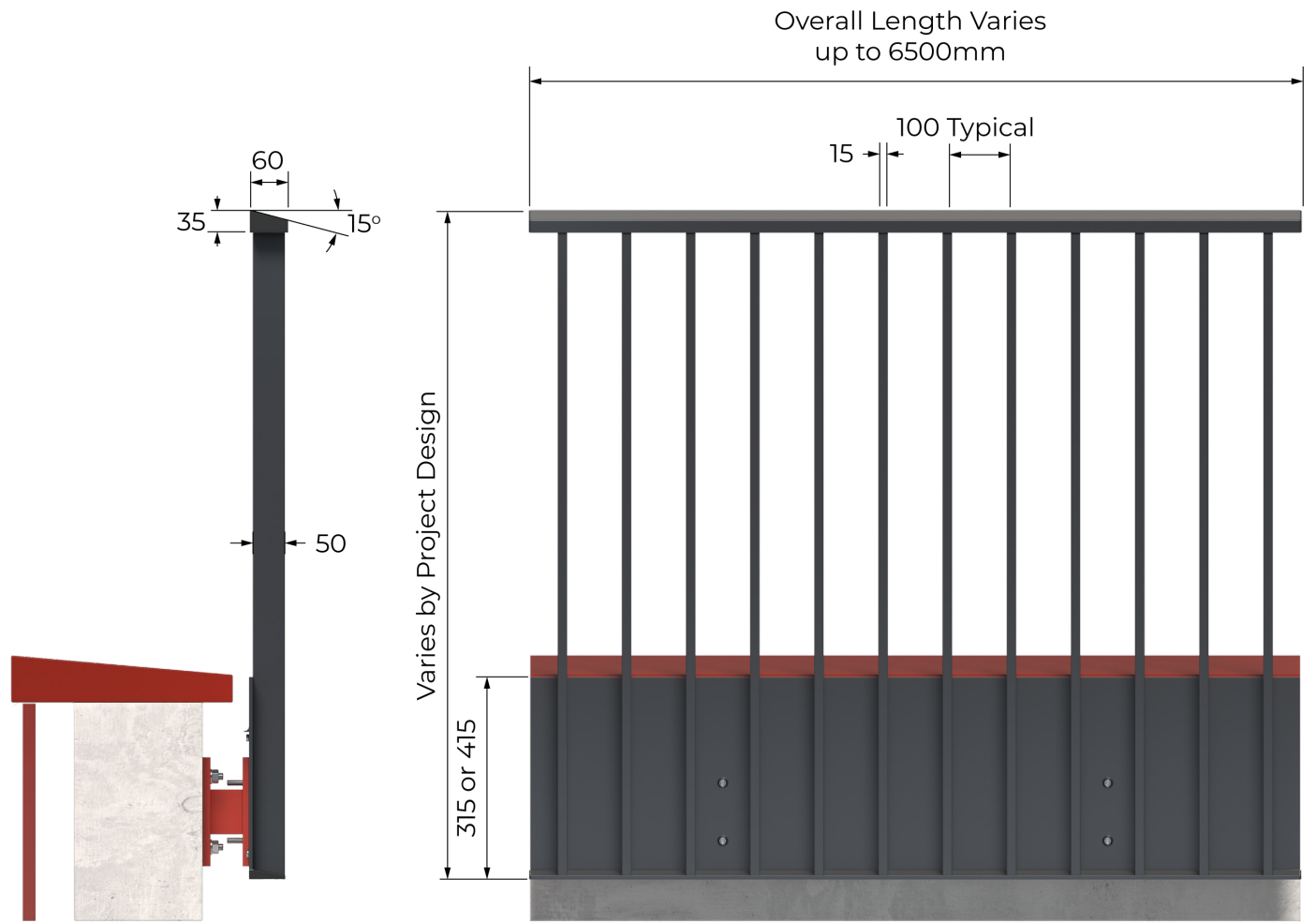
- (12) Mild Steel Bracket Typically 400-600mm Centres
- (13) M10 A2 Ss Torx Bolt
- (14) M10 A2 Ss Rivet Nut
- (15) Clamping Plate
- (16) M10 8.8 Chemical Resin Anchor
- (17) M10 Nut
- (18) M10 Washer

SYSTEM COMPONENTS

PROFILES		
1	IBa	Infill Bar
2	HCa	Handrail Capping
3	HBa	Handrail Base Carrier
4	MFb/MFc	Fascia
5	FTa	Fascia Toe

FITTINGS			
6	CS2001	LH 60x35 Handrail End Cap	
7	CS2002	RH 60x35 Handrail End Cap	
8	CS2009	LH Toe End Cap	
9	CS2010	RH Toe End Cap	

FIXINGS			
10	CSF2006	M8x30mm Torx Pan Taptite	
11	CSF2003	M6x20mm Torx Pan Taptite	



SYSTEM FEATURES

Horizontal Line Load
0.74KN

Weight
<20kg per l/m

Fast Installation
Simple Adjustments

Horizontal tolerance
Unlimited

Coating
Qualicoat

Fire Rated
A2-s1, d0

SYSTEM CONNECTIONS

Connection Example
Mild Steel Bracket

Connection Example
Bespoke



VANTAGE JULIET BALCONY SYSTEMS

Structurally engineered profiles make up a modular system which is fully compliant with BS8579:2020 and BS6180.

Top and bottom sloped profiles reduce pooling water and dirt build-up.



PRODUCT HIGHLIGHTS AT A GLANCE:

Under 25kg per l/m

Sloped Handrail - Finished in a Textured Paint

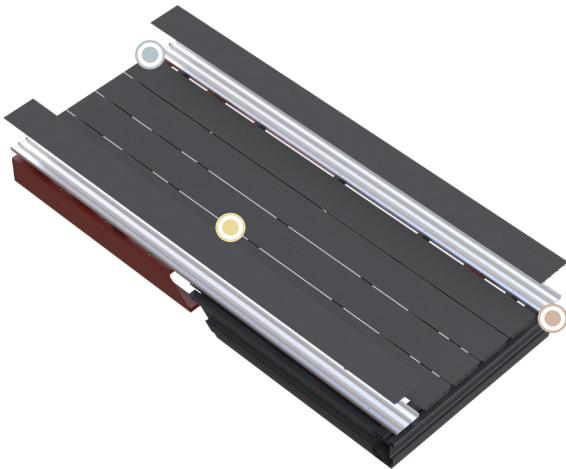
No welds or visible fixings

VERSATILE DECKING SYSTEMS

Designed for durability and easy installation, our Versatile Elite decking systems offer open joints or channelled drainage at no extra cost – perfect to meet any project drainage requirements.

Patent pending removable top surface eliminates any risk of site damage when fitting a balcony system, saving time and unexpected costs.

For maximum cost efficiency, we can offer Versatile Light, the perfect board for remediation projects.



PRODUCT HIGHLIGHTS AT A GLANCE:

Boards: A2 Class Non-Combustible

Slip Resistant Decking Properties

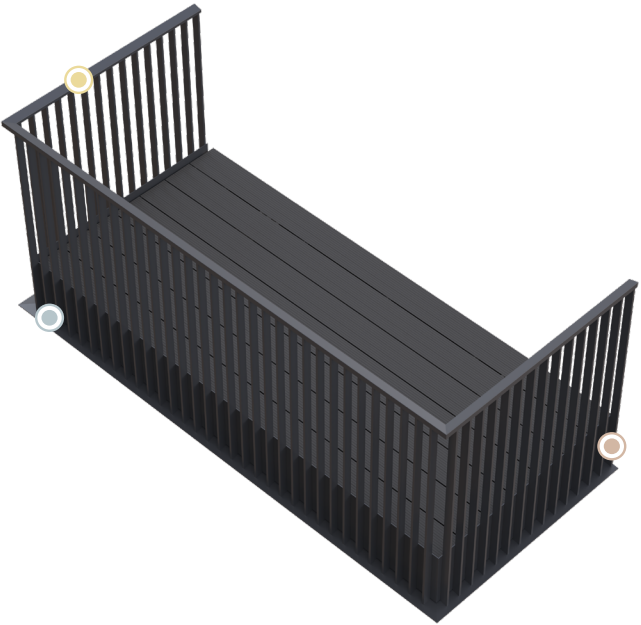
Connects to Steel Frame or Aluminium Chassis



GATEWAY



- ✓ Fabricated Steel Frame, OR
- ✓ Processed Aluminium Chassis
- ✓ Final processing - less than 50 cuts
- ✓ Processed in 44 minutes per system
- ✓ Assembled in 1 hour per system
- ✓ No Sheet Metal
- ✓ Cost Efficient



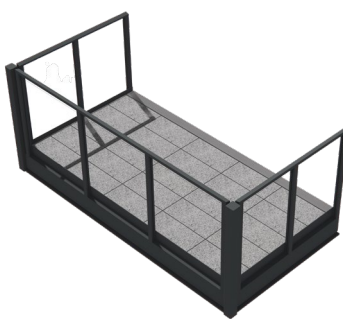
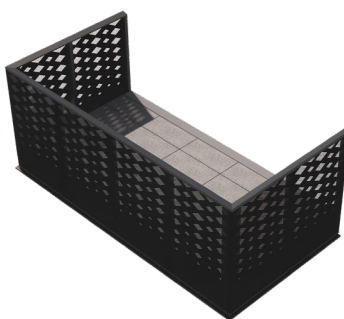
PRODUCT HIGHLIGHTS AT A GLANCE:

30mm drip edge for BS8579:2020

Balustrade assembly with no welds or visible fixings

Interlocking soffits

YOUR GATEWAY READY BALCONY SYSTEMS



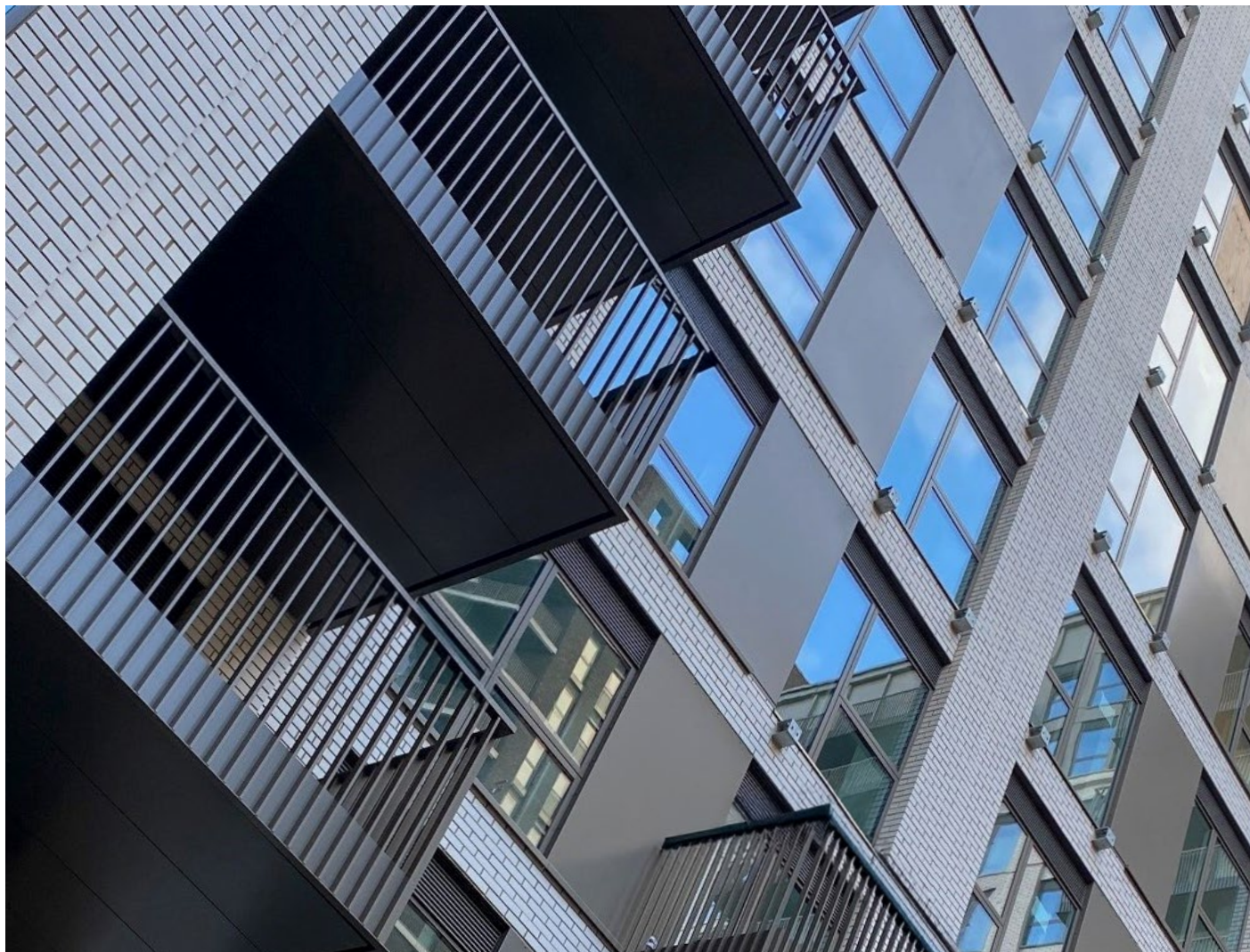
MF	PB	GT
----	----	----

HIGHLIGHTS AT A GLANCE:

WEIGHT PER M2
75kg

.....

ASSEMBLY TIME
1 Hour



ENHANCING LIFE ON THE SKYLINE.

RYNO LTD

hello@rynosystems.com

+44 (0) 203 967 3500

rynosystems.com

RYNO HEAD OFFICE

Castlepoint,
Castle Way, Ellon
AB41 9RG

RYNO STUDIO

2 Sutton Lane
London
EC1M 5PU

RYNO ASHFORD OFFICE

The Cobalt Building,
1600 Eureka Park, Kent
TN25 4BF

FINISH STRONG