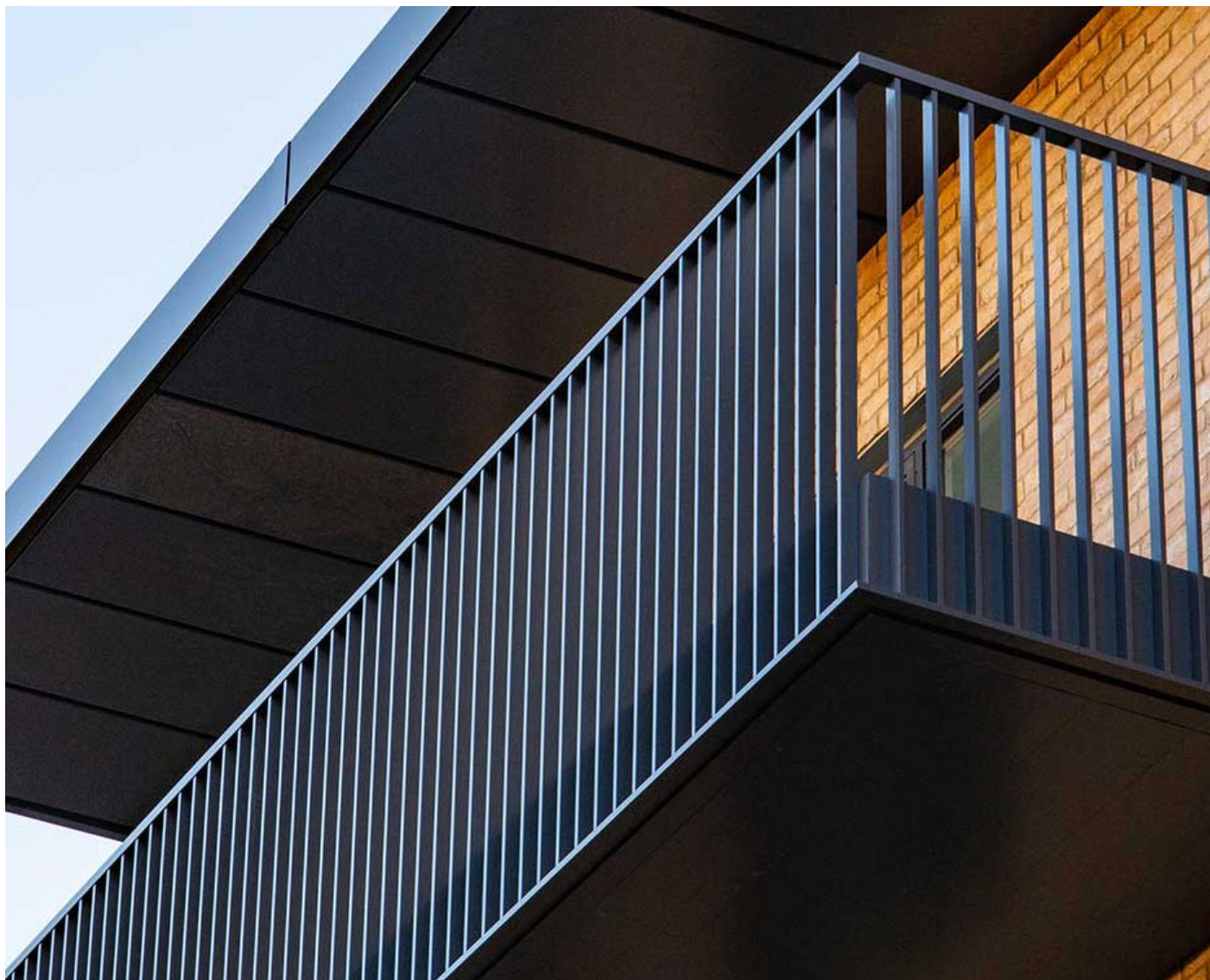


# LINEAR FLOW

## BALUSTRADE SYSTEM

A fully integrated, versatile balustrade system.



FINISH STRONG

# Linear Flow Balustrade System.

Introduction



Linear Flow is a modular balustrade system designed to **integrate seamlessly** with any frame or building structure.



Linear Flow Balustrade Systems are designed to match all other systems ensuring a perfect harmony of products on every project.

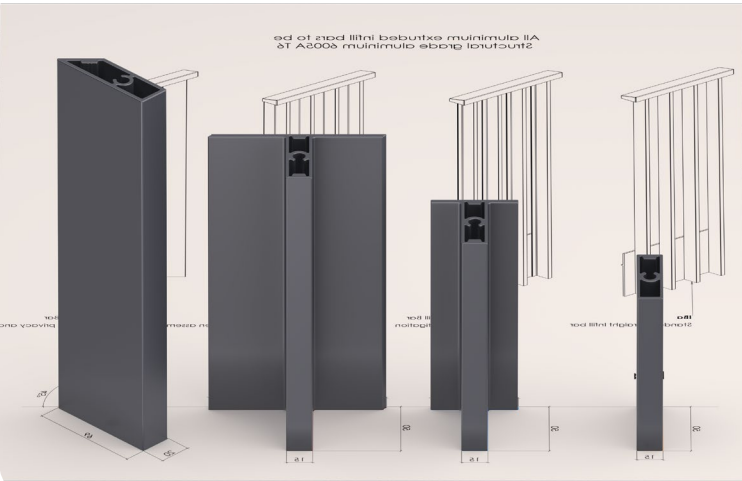
Top or Side fixed balustrade system with a structural base track – the perfect system for abutting to copings or flashings.

7 degree sloped base track, featuring a patent-pending sliding track, adapts to all types of site condition and increases fitting speed.

A range of first fix brackets connect to steel frames, concrete slabs, or parapet walls.

### BALUSTRADE OPTIONS

Solving wind mitigation, vision privacy, or simply just complementing design aesthetics, there is a variety of infill bar options available to suit any requirement.



### RANGE OF COLOURS

Allowing for architectural flair, all profiles are powder coated individually, giving options for 1 solid colour, or multiples.



# Linear Flow Balustrade System Types.

Standard Scenarios



Fixing	Steel Face Fix
Product Code	L-FL-SF

MORE ON PAGES 4-5

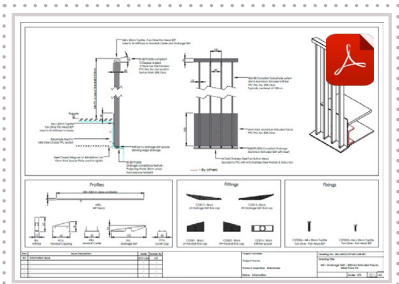
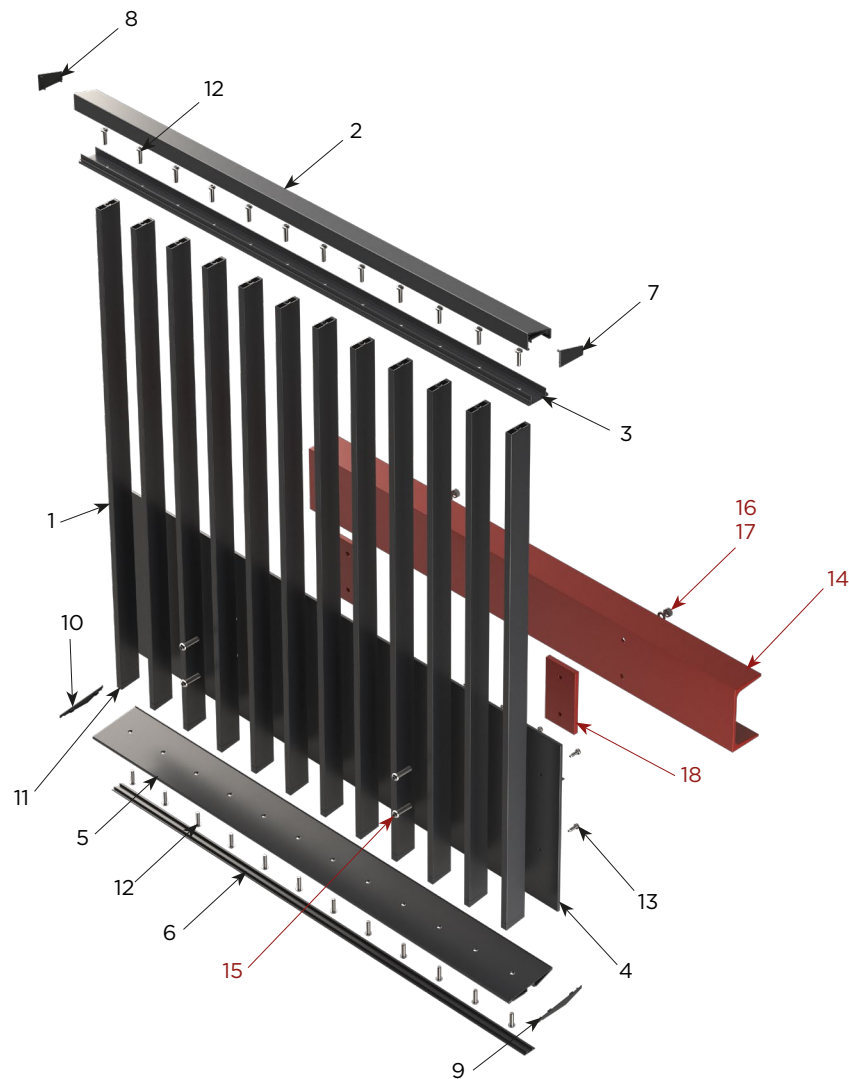


Fixing	Concrete Face Fix
Product Code	L-FL-CF

MORE ON PAGES 6-7



PRODUCT CODE L-FL-SF



Technical drawings and components details provided

EXAMPLE CONNECTION (not included)

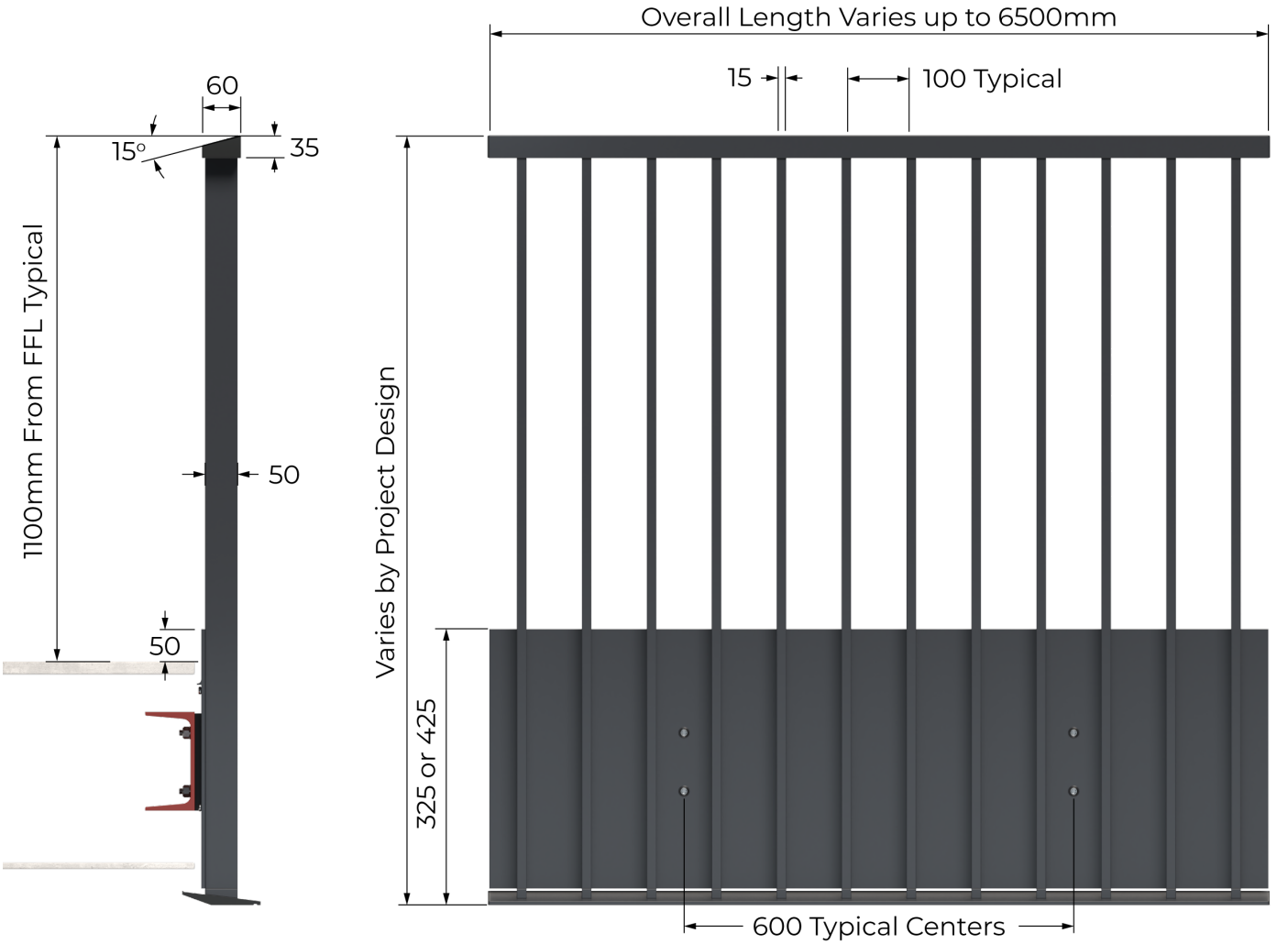
- (13) Mild Steel Section
- (14) M10 A2 SS Torx Bolt 400-600mm centers
- (15) M10 A2 SS Washer
- (16) M10 A2 SS Nyloc Nut
- (17) Spacer Plate

SYSTEM COMPONENTS

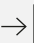
PROFILES		
1	IBa	Infill Bar
2	HCa	Handrail Capping
3	HBa	Handrail Base Carrier
4	MFb/MFc	Fascia
5	SKc	Drainage Skirt
6	CCa	Cover Cap

FITTINGS			
7	CS2001	LH 60x35 Handrail End Cap	
8	CS2002	RH 60x35 Handrail End Cap	
9	CS2012	LH Drainage Skirt End Cap	
10	CS2013	RH Drainage Skirt End Cap	
11	CS2014	Infill Bar Spacer	


FIXINGS			
12	CSF2006	M8x30mm Torx Pan Taptite	
13	CSF2003	M6x20mm Torx Pan Taptite	




SYSTEM FEATURES



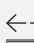
Horizontal Line Load  
0.74KN




Weight  
<20kg per l/m




Fast Installation  
Simple Adjustments



Horizontal tolerance  
Unlimited



Coating  
Qualicoat



Fire Rated  
A2-s1, d0

SYSTEM CONNECTIONS



Connection Example  
Mild Steel PFC



Connection Example  
Mild Steel UC

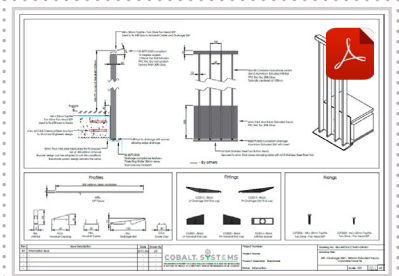
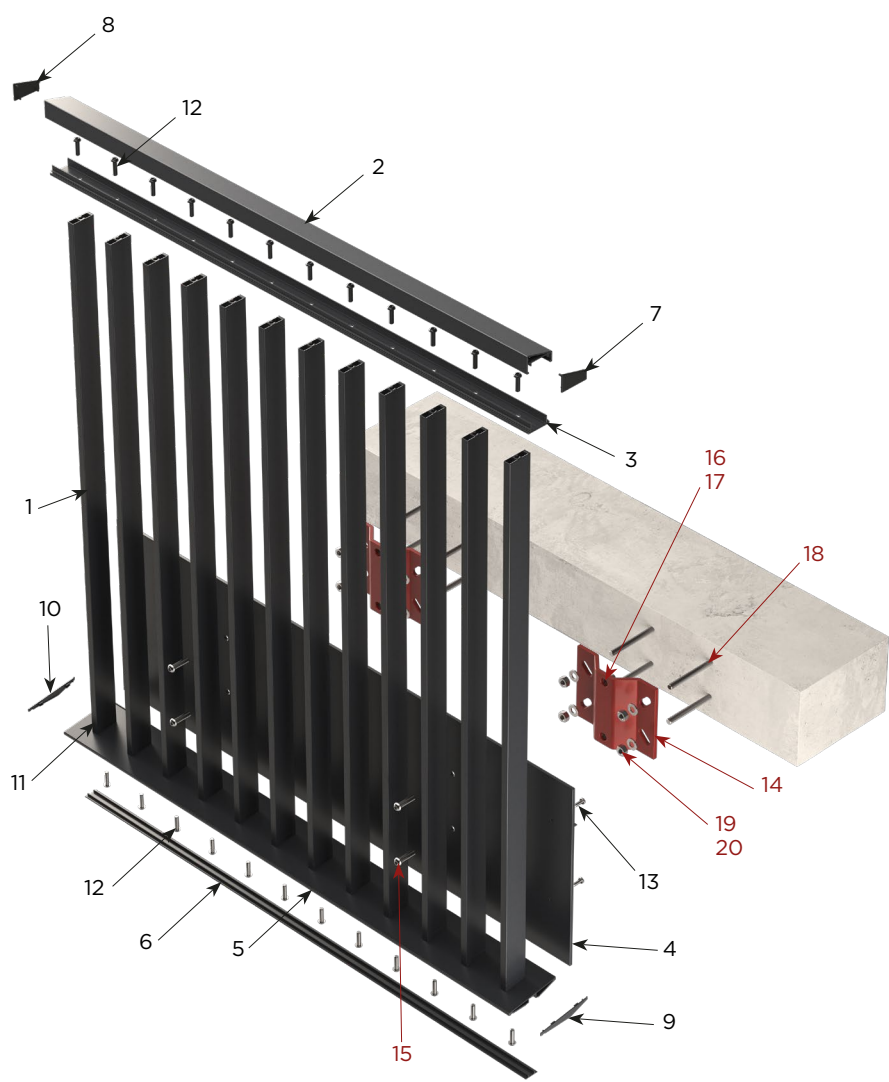


Connection Example  
Bespoke





PRODUCT CODE L-FL-CF



Technical drawings and components details provided

EXAMPLE CONNECTION (not included)

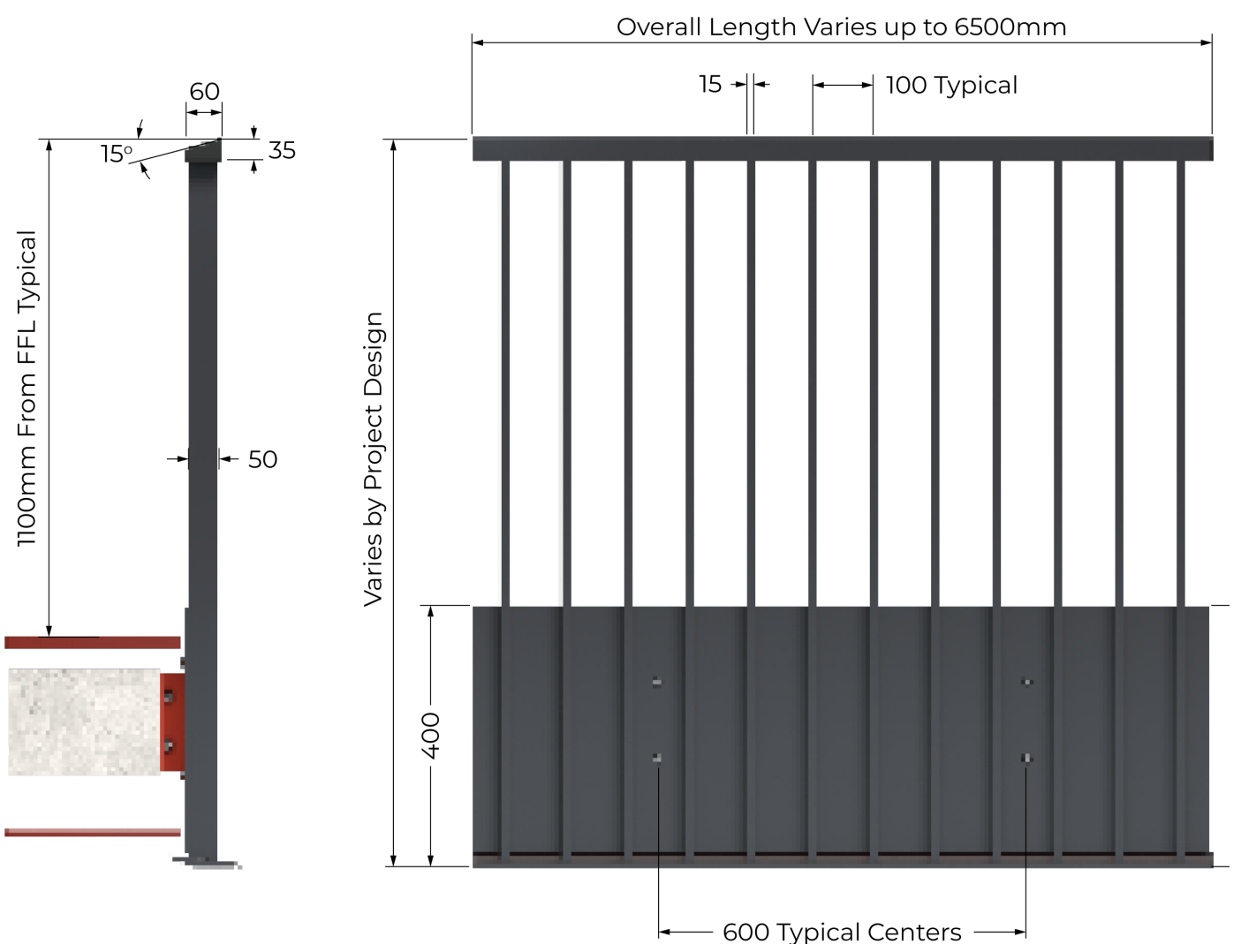
- (13) Mild Steel Bracket typically 400-600mm centres
- (14) M10 A2 SS Torx Bolt
- (15) M10 A2 SS Rivet Nut
- (16) Clamping Plate
- (17) M10 8.8 Chemical Resin Anchor
- (18) M10 Nut
- (19) M10 Washer

SYSTEM COMPONENTS

PROFILES		
1	IBa	Infill Bar
2	HCa	Handrail Capping
3	HBa	Handrail Base Carrier
4	MFb/MFc	Fascia
5	SKc	Drainage Skirt
6	CCa	Cover Cap

FITTINGS			
7	CS2001	LH 60x35 Handrail End Cap	
8	CS2002	RH 60x35 Handrail End Cap	
9	CS2012	LH Drainage Skirt End Cap	
10	CS2013	RH Drainage Skirt End Cap	
11	CS2014	Infill Bar Spacer	

FIXINGS			
12	CSF2006	M8x30mm Torx Pan Taptite	
13	CSF2003	M6x20mm Torx Pan Taptite	



SYSTEM FEATURES

Horizontal Line Load  
0.74KN

Weight  
<20kg per l/m

Fast Installation  
Simple Adjustments

Horizontal tolerance  
Unlimited

Coating  
Qualicoat

Fire Rated  
A2-s1, d0

SYSTEM CONNECTIONS

Connection Example  
Mild Steel Bracket

Connection Example  
Bespoke



VANTAGE JULIET BALCONY SYSTEMS

Structurally engineered profiles make up a modular system which is fully compliant with BS8579:2020 and BS6180.

Top and bottom sloped profiles reduce pooling water and dirt build-up.



PRODUCT HIGHLIGHTS AT A GLANCE:

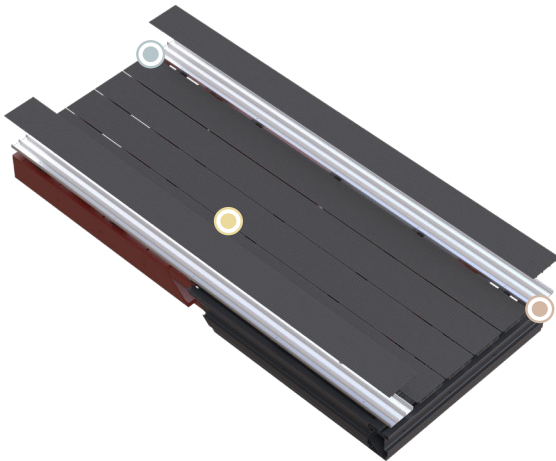
- Under 25kg per l/m
- Sloped Handrail - Finished in a Textured Paint
- No welds or visible fixings

VERSATILE DECKING SYSTEMS

Designed for durability and easy installation, our Versatile Elite decking systems offer open joints or channelled drainage at no extra cost – perfect to meet any project drainage requirements.

Patent pending removable top surface eliminates any risk of site damage when fitting a balcony system, saving time and unexpected costs.

For maximum cost efficiency, we can offer Versatile Light, the perfect board for remediation projects.



PRODUCT HIGHLIGHTS AT A GLANCE:

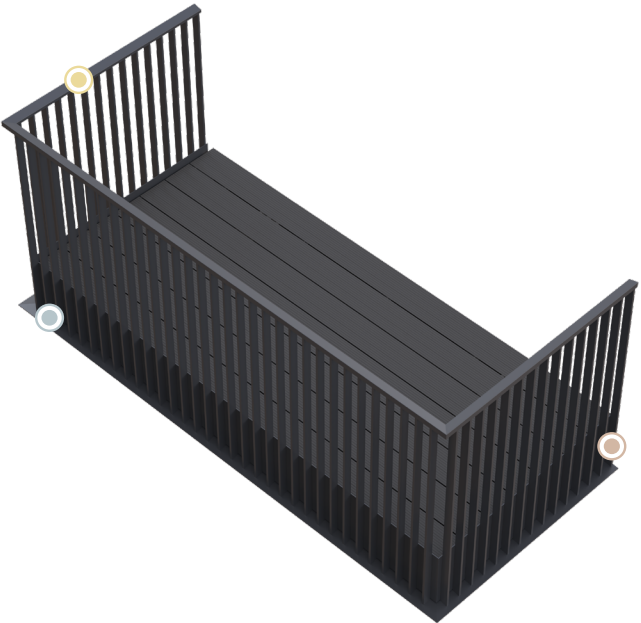
- Boards: A2 Class Non-Combustible
- Slip Resistant Decking Properties
- Connects to Steel Frame or Aluminium Chassis



GATEWAY



- ✓ Fabricated Steel Frame, OR
- ✓ Processed Aluminium Chassis
- ✓ Final processing - less than 50 cuts
- ✓ Processed in 44 minutes per system
- ✓ Assembled in 1 hour per system
- ✓ No Sheet Metal
- ✓ Cost Efficient



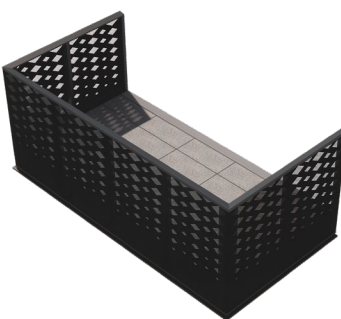
PRODUCT HIGHLIGHTS AT A GLANCE:

- 30mm drip edge for BS8579:2020
- Balustrade assembly with no welds or visible fixings
- Interlocking soffits

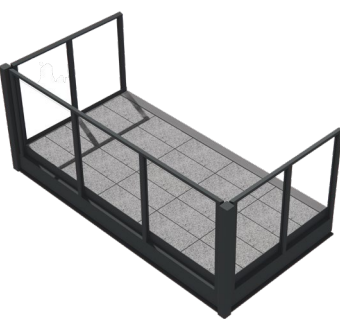
YOUR GATEWAY READY BALCONY SYSTEMS



MF



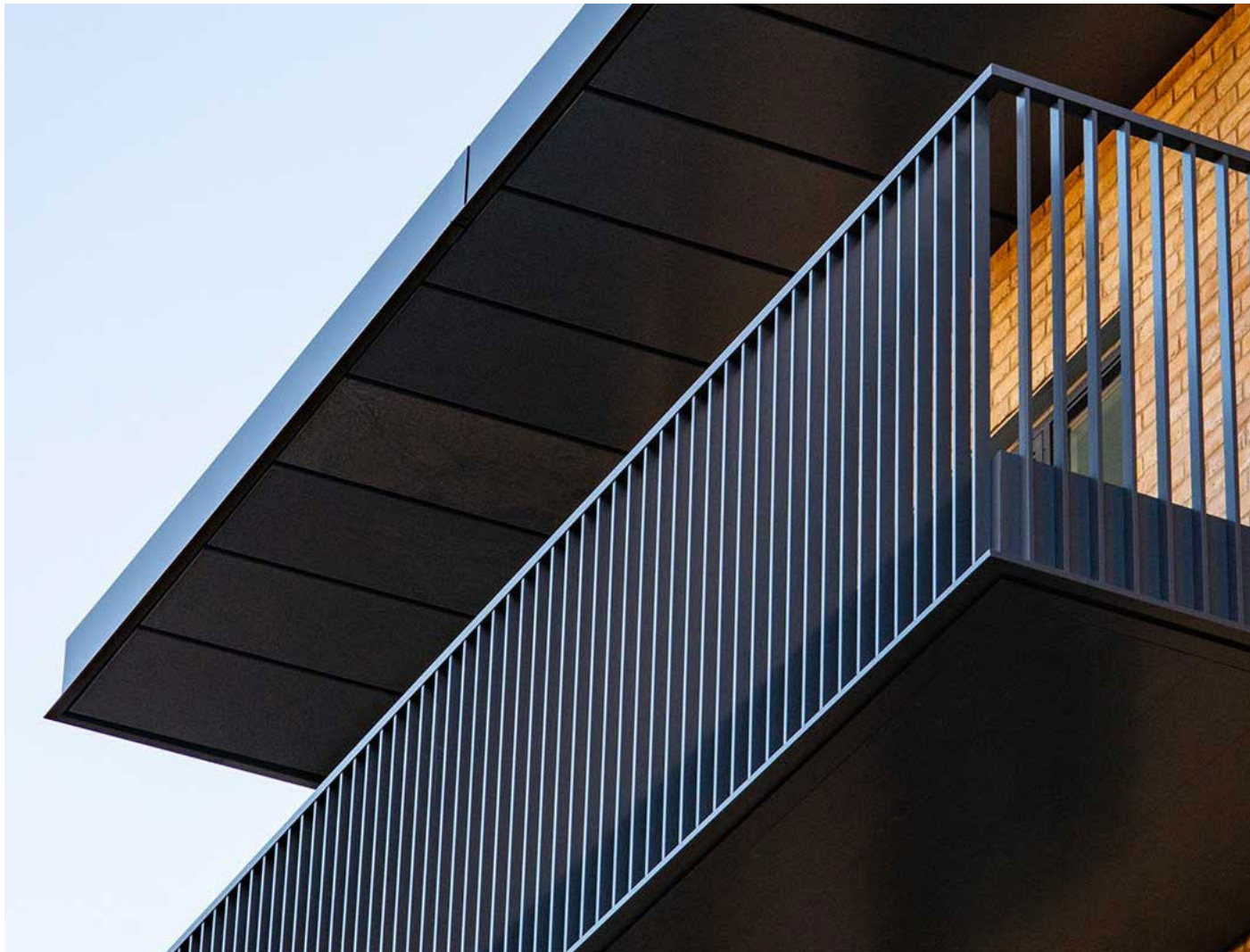
PB



GT

HIGHLIGHTS AT A GLANCE:

- WEIGHT PER M2  
**75kg**
- ASSEMBLY TIME  
**1 Hour**



# ENHANCING LIFE ON THE SKYLINE.

---

**RYNO LTD**

[hello@rynosystems.com](mailto:hello@rynosystems.com)

+44 (0) 203 967 3500

[rynosystems.com](http://rynosystems.com)

**RYNO HEAD OFFICE**

Castlepoint,  
Castle Way, Ellon  
AB41 9RG

**RYNO STUDIO**

2 Sutton Lane  
London  
EC1M 5PU

**RYNO ASHFORD OFFICE**

The Cobalt Building,  
1600 Eureka Park, Kent  
TN25 4BF

**FINISH STRONG**