

# ABP

## Ascent Bespoke Planter Edge

### Overview

The Ascent Bespoke Planter, aptly named due to its backward leaning face, is a totally bespoke planter edge. The panels come in virtually any size and integrate seamlessly with optional lighting, seating, and bespoke elements. Choose from a range of finishes and select the fixing method that is right for your project.

- Zintec, Corten and Stainless available
- Wide range of finishes and coatings
- 300-1100mm high
- Integrated lighting, cabinet doors and seating available
- 2 fixing options



### Details

<b>Materials</b>	Various options available including Zintec Steel, Corten Steel, Galvanized and Steel Stainless Steel, each finished in a number of ways. See Finishes
<b>Dimensions</b>	Height: 200-1100mm as standard Length: Variable as required Top Depth: 50mm as standard Base Depth: 100-150mm as standard Bespoke options on all dimensions.
<b>Weight</b>	Variable

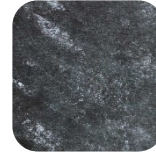
## Finishes



**Steel Finish**  
Corten Steel



**Steel Finish**  
Blackened  
Steel



**Steel Finish**  
Marbled  
Steel



**Metallic Finish**  
Dark Metallic  
Bronze  
Coating



**Metallic Finish**  
Mid Metallic  
Bronze  
Coating



**Metallic Finish**  
Corten Metallic  
Coating



**Classic Colour  
Finish**  
Anthracite  
Grey



**Classic Colour  
Finish**  
Jet Black



**Classic Colour  
Finish**  
Pebble Grey



**Classic Colour  
Finish**  
Black Grey



**Classic Colour  
Finish**  
Telegrey

## Compatible Systems

### **TerraSmart®**

Ascent Bespoke Planter System

Featuring a backward slant on  
the planter face

## More information

Scan the QR code:



**Speak to one of our expert advisors:**

Visit [www.rynosystems.com](http://www.rynosystems.com), call +44 (0)203 967 3500, or email [sales@rynosystems.com](mailto:sales@rynosystems.com).