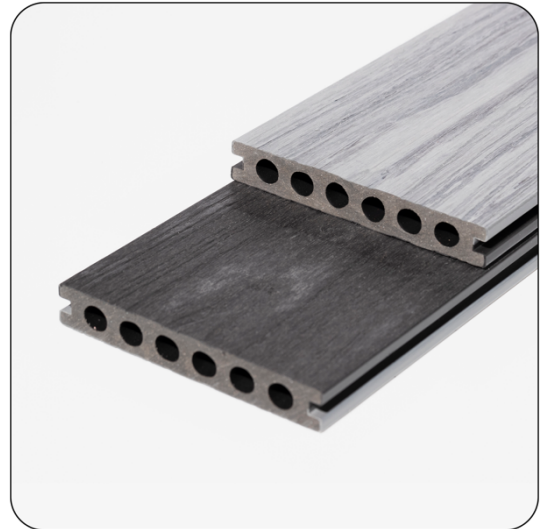


Signature™ Composite Decking Board

Overview

Signature™ capped wood-polymer composite (WPC) decking board has a timeless wood-grain appearance.

- Long-lasting: will not rot, warp or twist
- Non-slip and splinter-proof
- Low maintenance: no need to treat or stain
- Manufactured using FSC® certified timber



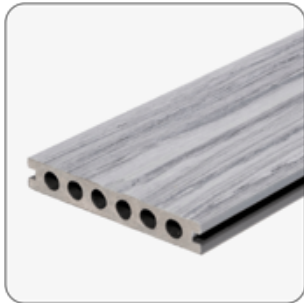
Performance

Density – ASTM D792-13 Method B	1.19 g/cm ³
Flexural strength – ASTM D790-10 Procedure A	34.5MPa
Flexural modulus – A	3510MPa
Izod unnotched impact strength - ASTM D4812-11	88 J/m (Complete break)
Shore hardness - With Ref to ASTM D2240-05 (2010)	D/70/1
Tensile strength - ASTM D638-14	24.9MPa
Water absorption – ASTM D570-98 (2010)	0.63%
Coefficient of linear thermal expansion (1/Co) ASTM D696-08	-30°C ~30°C: 33.12x10 ⁻⁶
Slip resistance – (Pendulum Test) – Silver Birch & Teak	PTV (Dry) 49, PTV (Wet) 37 - Low risk of slip
Slip resistance – (Pendulum Test) – Mahogany & Ebony	PTV (Dry) 50, PTV (Wet) 37 - Low risk of slip
Reaction to fire – EN ISO 13501-1	C _{fi} - s1

Dimensions

Code	Width	Thickness	Length
Decking Board	142mm	22mm	3000mm

Finishes

**Silver birch****Teak****Ebony****Mahogany****Sycamore****Willow**

Accessories

**Bullnose board**

For neat finishing at edge of deck areas and step treads.

**Edge profile**

An alternative way of capping off-board ends/step treads

Accessories (Cont.)



Plastic T-clip

For a 6mm gap between boards



Metal clasp

For a 4mm gap between boards



Starter/End Clip

For fixing down decking at start and finish of decking areas



Decking Screw - Black

3.9 x 30mm CK screw for Plastic T-Clips

Compatible Systems

TerraSmart[®]

Composite Decking System

Wood-plastic composite decking
system for outdoor spaces