

# RST

## Aluminium Paving Support Top Rail



### Overview

RST aluminium top rails form part of Ryno's Rail systems. They provide complete support for paving. They can be laid at any centre-to-centre intervals across primary rails, to cater for varied paving course widths.

The rails feature an integrated 2mm shock-absorbent gasket, a channel for paving spacers to lock into, and side flanges for robust fixing into lower primary rail.

- Continuous linear support for paving
- Shock-absorbent gasket eliminates paving grinding against aluminium
- Allows for random length paving
- Twist-lock in spacers fix into centre channel



### Performance

<b>Allowable load</b>	Uniformly distributed >4.0kN/m <sup>2</sup> , Concentrated 2kN
<b>Aluminium grade</b>	6063 T6
<b>Biological/Chemical</b>	Resistant to moulds algae, alkali, bitumen, UV
<b>Reaction to fire</b>	A1

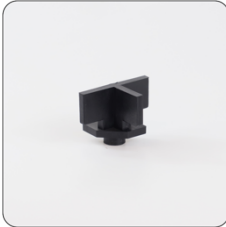
### Dimensions and Spans

Code	Height x Width	Span	Length	Weight	Lattice system
<b>RST27</b>	27mm x 80mm	600mm	3600mm	2.4kg/m <sup>2</sup>	Yes
<b>RST62</b>	62mm x 80mm	1400mm	3600mm	3.1kg/m <sup>2</sup>	Yes

### Got questions?

Visit [www.rynogroup.co.uk](http://www.rynogroup.co.uk) or call us today on **+44 (0)203 967 3500** or reach out on [sales@rynogroup.co.uk](mailto:sales@rynogroup.co.uk).

## Accessories



### Paving Spacers

T, Straight and Cross spacers inserted to the rail providing uniform spacing between slabs



### Edge and Side Stops


Attached to the RST on the edges to secure pavers in place and minimise movement



### Joist screw


Hex washer head screw 4.8X19mm

## Compatible Systems



**TerraSmart®**  
Rail Paving System

Premium, versatile paving system for waterproofed substrates



**BalcaSmart®**  
Rail Paving System

Premium, versatile paving system for waterproofed substrates

**TerraSmart®**  
Rail Paving System

Premium, versatile paving system for waterproofed substrates, **where non-combustibility isn't required**