

RPA-FR

# Non-Combustible Self-Levelling Paving Support Pedestal


 Patent application number:  
GB2114763.2

## Overview

Non-combustible paving pedestal with built-in, lockable slope correction. Manufactured from steel, with zinc-nickel electroplating for corrosion resistance, the RPA-FR gives strong, adjustable support for paving tiles.

- Suits all calibrated paving types, incl. natural stone, concrete, and porcelain
- Perfect for terraces, podiums, roof decks and inset balconies
- Integrated metal spacer tabs
- Holes in the base can be used for fixing to the substrate
- 'Ball and socket' securable head design for slope correction



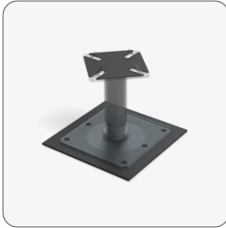
## Performance

<b>Reaction to fire (EN13501-1)</b>	A1
<b>Product material</b>	Zinc-nickel electroplated mild steel
<b>Compression</b>	2200kg
<b>Base dimensions</b>	124mm x 124mm 170mm Spreader Plate available
<b>Head dimensions</b>	90mm x 90mm
<b>Biological/chemical</b>	Resistant to moulds, algae, alkali, bitumen, UV
<b>Design life</b>	60 years
<b>Warranty</b>	30 years
<b>Maximum slope correction</b>	10.5% (6°)

## Size Range

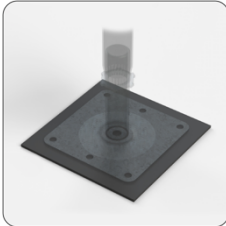
Code	Height range	Weight	Packaging/pack sizes
RPA-FR-1	35-40mm	0.64kg	Boxes/bags of 25
RPA-FR-2	40-50mm	0.68kg	Boxes/bags of 25
RPA-FR-3	50-70mm	0.7kg	Boxes/bags of 25
RPA-FR-4	70-115mm	0.76kg	Boxes/bags of 25
RPA-FR-5	110-190mm	0.92kg	Boxes/bags of 25
RPA-FR-6	190-305mm	1.11kg	Boxes/bags of 15
RPA-FR-7	305-405mm	1.28kg	Boxes/bags of 15
RPA-FR-8	405-505mm	1.39kg	Boxes/bags of 15

## Accessories



### Head shock pads

Head shock-absorbent gaskets fit on top of the paving supports, cushioning tiles and removing the possibility for grit to cause grinding between tile and pedestal head.



### Base shock pads

Base shock-absorbent membrane pads can be installed under the pedestal/support base to enhance acoustic properties, or to provide additional protection to the waterproof system.



### Edge spring clip

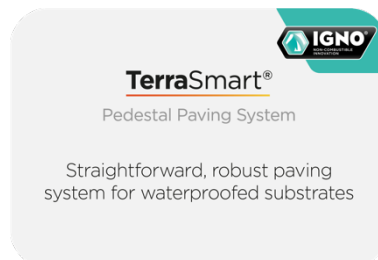
The edge spring clip fits on top of paving supports around the periphery of paved areas to ensure uniform spacing against wall abutments, helping ensure rapid drainage. By tensioning the tile bed, it counteracts creepage and movement.



### Spreader Plate

For applications where the substrate requires lower point pressure, the 170mm circular spreader plate can be attached to the underside of the pedestal base

## Compatible Systems



## Got questions?

### Speak to one of our expert advisors

Visit [www.rynogroup.co.uk](http://www.rynogroup.co.uk) or call us today on **+44 (0)203 967 3500** or reach out on [sales@rynogroup.co.uk](mailto:sales@rynogroup.co.uk).