

Liora

Textured Concrete Paving



Overview

Liora concrete paving elegantly catches the light with each of its finishes to give a textured and contemporary feel to terraces, balconies, and access walkways. This range of concrete pavers is akin to the feel of a natural igneous rock. Liora paving offers attractive and unique finishing options to the space.

Key Features:

- 10 colours to choose from
- Complies with BS EN 1339:2003
- Non-combustible - A1 rated
- Suitable for high foot traffic areas



Description

Appearance	Two-part unit with textured surface and integral spacers
Manufacturing Process	Semi-dry pressed and vibrated concrete
Base Raw Material	Concrete
Governing Manufacturing Standards	All data where relevant to be established in accordance with BS EN 1339 : 2003

Physical Properties

Tolerances on Work Dimensions (mm)	Length ± 2 mm, width ± 2 mm, thickness ± 3 mm
Abrasion Resistance (mm)	≤ 23 mm (Wide Wheel Abrasion Test)
Durability (Freeze-thaw) \leq	≤ 1.0 kg/m ² as a mean with no individual value > 1.5 kg/m ²
Material Density	2300 kg/m ³ (typically)
Slip/Skid Resistance (polished)	Mean polished skid resistance value (PSRV) : > 45
Slip/Skid Resistance (unpolished)	Mean unpolished skid resistance value (USRV) : > 45 .
Thermal Conductivity (K value)	Design data as defined to BS EN 13369 : 2013

Specification

Emission of Asbestos	No content
Reaction to fire	A1 and Afl
Breem	These units can achieve an "A" rated system when used in conjunction with the correct sub-base components
Carbon Footprint	32kg CO ₂ m ²

Size Range

Nominal Dimensions (mm)	Work Dimensions (mm)	Approx. Weight (KG)	Pack Qty	Pack Weight (KG)
200 x 100 x 80	199 x 99 x 80	4	378	1360
200 x 200 x 80	199 x 199 x 80	7	180	1296
300 x 100 x 80	299 x 99 x 80	6	252	1492
300 x 200 x 80	299 x 199 x 80	11	120	1296
300 x 300 x 80	299 x 299 x 80	14	84	1210
400 x 200 x 80	399 x 199 x 80	15	112	1253
400 x 300 x 80	399 x 299 x 80	23	56	1240
400 x 400 x 80	399 x 399 x 80	30	42	1256
600 x 200 x 80	599 x 199 x 80	23	56	1253
600 x 300 x 80	599 x 299 x 80	32	42	1360
600 x 600 x 80	599 x 599 x 80	67	16	1080

Further Information

Cleaning & Maintenance	Available on request
Efflorescence	Any product containing cement during its early life may exhibit a temporary white discolouration known as efflorescence. This is not a product fault and will gradually disappear with exposure to natural weathering and trafficking.
Weathering	It should be appreciated that with all products weathering and site conditions can cause shade variation to appear across the surface of individual units. This does not in any way affect the performance of the units and any such variation will diminish over a period of time as the product matures.
Product Evolution	The evolution of new product design is continuous, and information is subject to change without notice. Customers should check with the supplier to ensure that they have the latest details. Ryno reserve the right to amend the technical information as deemed necessary and in accordance with the relevant national and international standards without notice.
Chemical Incompatibilities	
Recommended End of Life Disposal	

Got questions?

Speak to one of our expert advisors

Visit www.rynogroup.co.uk or call us today on **+44 (0)203 967 3500** or reach out on sales@rynogroup.co.uk.

Colours
Silver Grey Granite


200 x 100 x 80
 200 x 200 x 80
 300 x 100 x 80
 300 x 200 x 80
 300 x 300 x 80
 400 x 200 x 80
 400 x 300 x 80
 400 x 400 x 80
 600 x 200 x 80
 600 x 300 x 80
 600 x 600 x 80

Anthracite Granite


200 x 100 x 80
 200 x 200 x 80
 300 x 100 x 80
 300 x 200 x 80
 300 x 300 x 80
 400 x 200 x 80
 400 x 300 x 80
 400 x 400 x 80
 600 x 200 x 80
 600 x 300 x 80
 600 x 600 x 80

Blush Granite


200 x 100 x 80
 200 x 200 x 80
 300 x 100 x 80
 300 x 200 x 80
 300 x 300 x 80
 400 x 200 x 80
 400 x 300 x 80
 400 x 400 x 80
 600 x 200 x 80
 600 x 300 x 80
 600 x 600 x 80

Charcoal Grey Granite

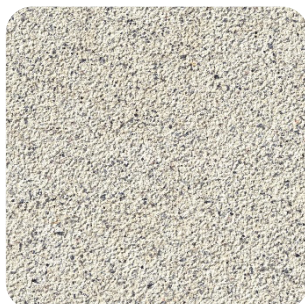

200 x 100 x 80
 200 x 200 x 80
 300 x 100 x 80
 300 x 200 x 80
 300 x 300 x 80
 400 x 200 x 80
 400 x 300 x 80
 400 x 400 x 80
 600 x 200 x 80
 600 x 300 x 80
 600 x 600 x 80

Indian Granite


200 x 100 x 80
 200 x 200 x 80
 300 x 100 x 80
 300 x 200 x 80
 300 x 300 x 80
 400 x 200 x 80
 400 x 300 x 80
 400 x 400 x 80
 600 x 200 x 80
 600 x 300 x 80
 600 x 600 x 80

Light Cream Granite


200 x 100 x 80
 200 x 200 x 80
 300 x 100 x 80
 300 x 200 x 80
 300 x 300 x 80
 400 x 200 x 80
 400 x 300 x 80
 400 x 400 x 80
 600 x 200 x 80
 600 x 300 x 80
 600 x 600 x 80

Light Granite


200 x 100 x 80
 200 x 200 x 80
 300 x 100 x 80
 300 x 200 x 80
 300 x 300 x 80
 400 x 200 x 80
 400 x 300 x 80
 400 x 400 x 80
 600 x 200 x 80
 600 x 300 x 80
 600 x 600 x 80

Mauve Granite


200 x 100 x 80
 200 x 200 x 80
 300 x 100 x 80
 300 x 200 x 80
 300 x 300 x 80
 400 x 200 x 80
 400 x 300 x 80
 400 x 400 x 80
 600 x 200 x 80
 600 x 300 x 80
 600 x 600 x 80

Mid Grey Granite



- 200 x 100 x 80
- 200 x 200 x 80
- 300 x 100 x 80
- 300 x 200 x 80
- 300 x 300 x 80
- 400 x 200 x 80
- 400 x 300 x 80
- 400 x 400 x 80
- 600 x 200 x 80
- 600 x 300 x 80
- 600 x 600 x 80

Oatmeal Granite



- 200 x 100 x 80
- 200 x 200 x 80
- 300 x 100 x 80
- 300 x 200 x 80
- 300 x 300 x 80
- 400 x 200 x 80
- 400 x 300 x 80
- 400 x 400 x 80
- 600 x 200 x 80
- 600 x 300 x 80
- 600 x 600 x 80

Compatible Systems

<p>TerraSmart® Pedestal Paving System</p> <p>Straightforward, robust paving system for waterproofed substrates</p>	<p>TerraSmart® Rail Paving System</p> <p>Premium, versatile paving system for waterproofed substrates</p>	<p>TerraSmart® Rail Paving System</p> <p>Premium, versatile paving system for waterproofed substrates, where non-combustibility isn't required</p>
<p>TerraSmart® Pedestal Paving System</p> <p>Straightforward, robust paving system for waterproofed substrates, where non-combustibility isn't required</p>	<p>BalcaSmart® Pedestal Paving System</p> <p>Straightforward, robust paving system for metal-frame balconies</p>	<p>BalcaSmart® Rail Paving System</p> <p>Premium, versatile paving system for waterproofed substrates</p>

Got questions?

Speak to one of our expert advisors

Visit www.rynogroup.co.uk or call us today on **+44 (0)203 967 3500** or reach out on sales@rynogroup.co.uk.