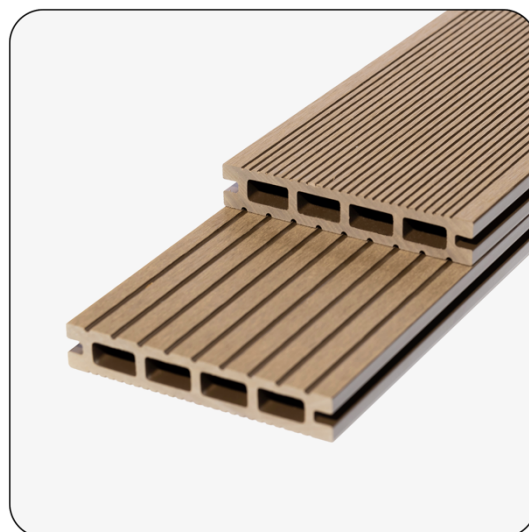


Classic™ Composite Decking Board

Overview

Classic™ wood-polymer composite (WPC) decking board has a contemporary, grooved appearance.

- Long-lasting: will not rot, warp or twist
- Non-slip and splinter-proof
- Low maintenance: no need to treat or stain
- Manufactured using FSC® certified timber



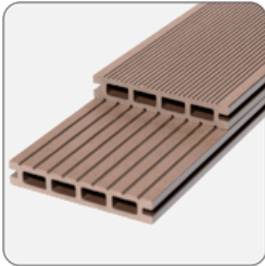
Performance

Density - ASTM D792-13 Method B	1.33 g/cm ³
Flexural strength - ASTM D790-10 Procedure A	40.4MPa
Flexural modulus - A	5240MPa
Izod unnotched impact strength - ASTM D4812-11	72 J/m (Complete break)
Shore hardness - With Ref to ASTM D2240-05 (2010)	D/72/1
Tensile strength - ASTM D638-14	25.5MPa
Water absorption - ASTM D570-98 (2010)	1.15%
Coefficient of linear thermal expansion (1/Co) ASTM D696-08	-30°C ~30°C: 31.85x10 ⁻⁶
Slip resistance - (Pendulum Test) - Narrow Grooves	PTV (Dry) 49, PTV (Wet) 37 - Low risk of slip
Slip resistance - (Pendulum Test) - Wide Grooves	PTV (Dry) 50, PTV (Wet) 37 - Low risk of slip
Reaction to fire - EN ISO 13501-1	C _{fl} - s1

Dimensions

Code	Width	Thickness	Length
Decking Board	150mm	25mm	3000mm

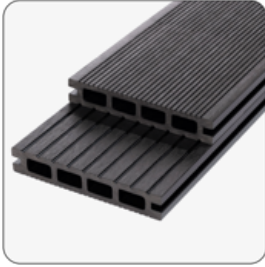
Finishes



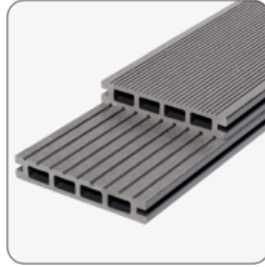
Chocolate



Sand



Charcoal



Slate

Accessories



Edge profile

Alternative way of capping off board ends/step treads.



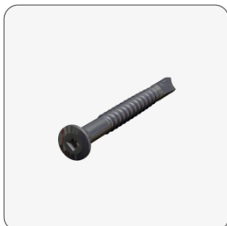
Plastic T-clip

For a 6mm gap between boards



Metal clasp

For a 4mm gap between boards



Decking Screw - Black

3.9 x 30mm CK screw for Plastic T-Clips

Accessories (Cont.)



Starter/End Clip

For fixing down decking at start and finish of decking areas

Compatible Systems

TerraSmart®

Composite Decking System

Wood-plastic composite decking system for outdoor spaces

Got questions?

Speak to one of our expert advisors

Visit www.rynogroup.co.uk or call us today on **+44 (0)203 967 3500** or reach out on sales@rynogroup.co.uk.