

ADB Aluminium Decking Board



Overview

Fully non-combustible aluminium decking board designed to be fixed to aluminium substructures on balconies and terraces. Achieves Euroclass A2-s1, d0 fire rating.

- Manufactured from 6063-T6 structural grade aluminium - ensuring high strength while remaining corrosion-resistant
- Indirect fixing method allows for thermal expansion and contraction
- Powder coated with textured coating for high slip resistance
- Excellent scratch and wear resistance, even in areas of high foot-traffic
- Boards available in any RAL colour with 6 standard finishes - see finishes



Performance

Allowable load	Uniformly distributed >4.0kN/m ² , Concentrated 2kN
Aluminium grade	6063 T6
Biological/chemical	Resistant to moulds, algae, alkali, bitumen, UV
Board coating	Textured Powder coating (Qualicoat approved range of Architectural Polyesters)
Coefficient of linear thermal expansion	0.023mm/m/°C
Reaction to fire (to EN13501-1)*	A2-s1, d0
Scratch resistance (Furniture Leg Test)*	No damage identified.
Slip resistance (Pendulum Test)*	PTV (Dry) 55, PTV (Wet) 36 – Low risk of slip
Wear resistance (Footfall Test)*	No signs of wear after 100,000 footfalls
Warranty	30 years
Design life	60 years

*UKAS accredited test reports available on request.

Dimensions

Code	Height	Width	Span	Length*
ADB60	25mm	200mm	600mm	Available in stock lengths or cut to length
ADB80	25mm	200mm	800mm	Available cut to length
ADB100	30mm	200mm	1000mm	Available cut to length

*Also available cut to any length up to 11m, manufactured to order

Finishes



RAL 7040
Window Grey



RAL 7016
Anthracite Grey



RAL 8014
Sepia Brown



RAL 7037
Dusty Grey



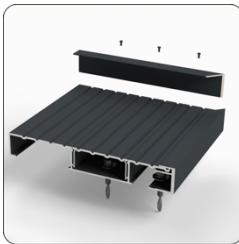
RAL 8019
Grey Brown



RAL 7039
Quartz Grey

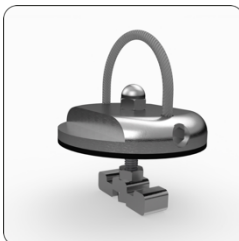
In addition to our standard colour range, we can also produce decking boards in almost any RAL colour. As well as UltraGrip™ - see accessories.

Accessories



Side and End Termination Profiles

Secured to the edges of the board, these profiles provide a concealing finish to exposed board profiles.



Furniture Anchor

Easily installed, repositioned, and removed, the furniture anchor secures outdoor furniture to prevent wind uplift and movement as per guidance given in BS 8579:2020.



AluClip™

20mm wide hidden clip for fixing. Aluminium Alloy T6.
Patent pending: GB2009927.1
60mm wide option to hide mill finish joists - saves powder coating the joist



Starter/End Clip

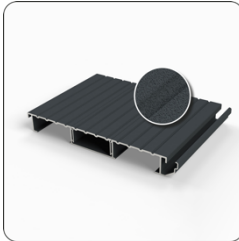
Used on perimeter boards, this clip allows you to easily secure the first and final board in place

Accessories (Cont.)



30mm Decking Screw


3.9 x 30mm stainless steel A4, chemiblack finish, square drive countersunk head, self-drilling



UltraGrip™

Applied for enhanced slip resistance and surface durability. Available in classic Anthracite Grey (RAL7016).

Compatible Systems



TerraSmart®
Aluminium Decking System

Decking system for waterproofed substrates



BalcaSmart®
Aluminium Decking System

Decking system for metal-frame balconies

Got questions?

Speak to one of our expert advisors

Visit www.rynogroup.co.uk or call us today on **+44 (0)203 967 3500** or reach out on sales@rynogroup.co.uk.