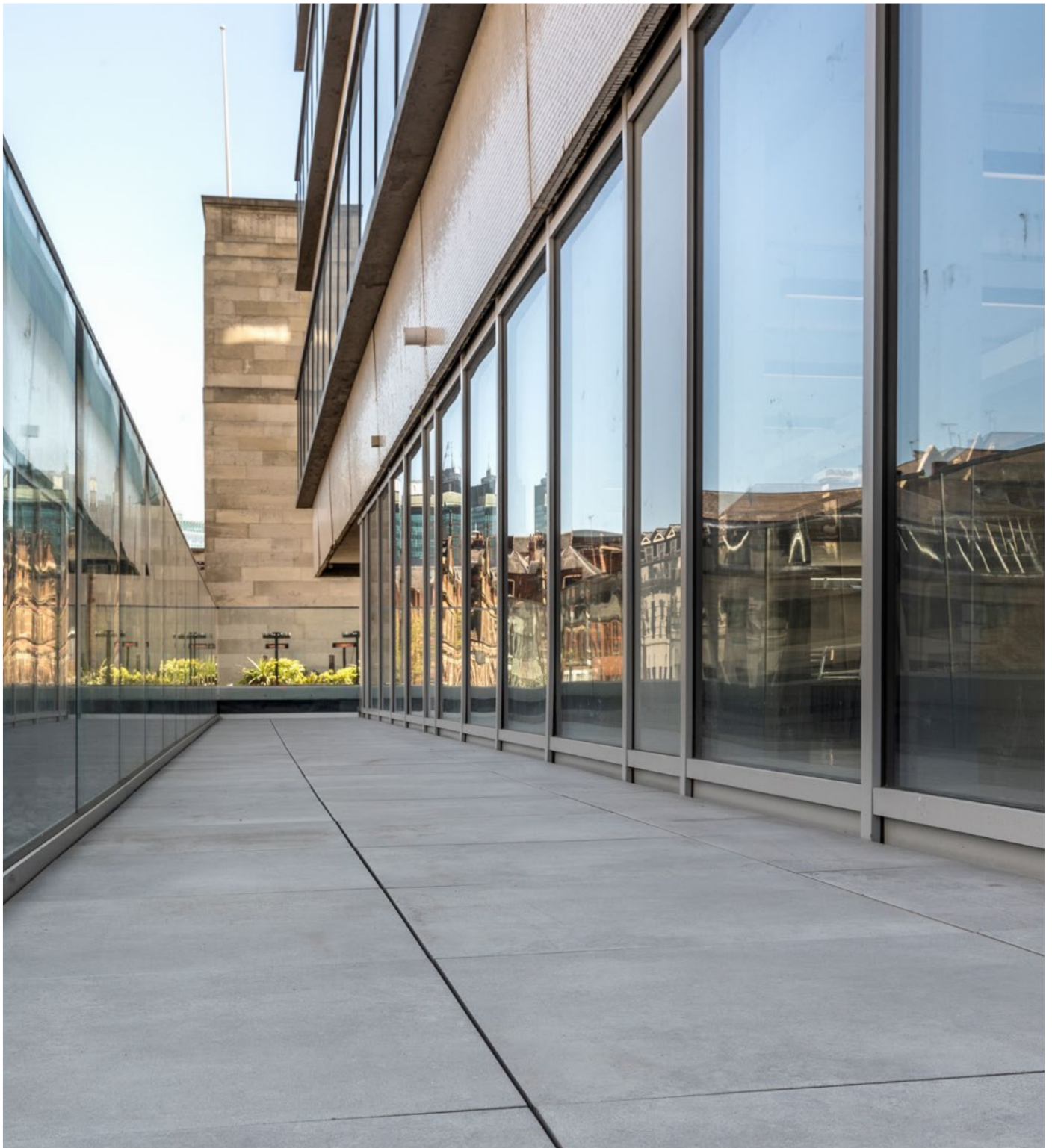


## Pedestal Paving System

A paving system for waterproofed substrates





## Why this System?

The TerraSmart™ Pedestal system offers a high quality yet economical option for creating paving areas on terraces, inset balconies and other outdoor spaces.

“High quality yet economical”

- Full system height build-up from just 30mm to over 500mm
- Unbeatably fast and simple two-step installation process
- High-quality paving finishes come in a range of styles and designs
- Enables efficient water drainage through paving  
Designed to create grid, stack and brick-bond paving areas



### Out of the Box Compliance

Like you, we want to make our buildings and our lives safer. So we've made it easy for you to comply with current building and fire safety regulations. You choose the finish, we'll take care of the compliance. Simple, smart, non-combustible flooring systems for terraces and balconies

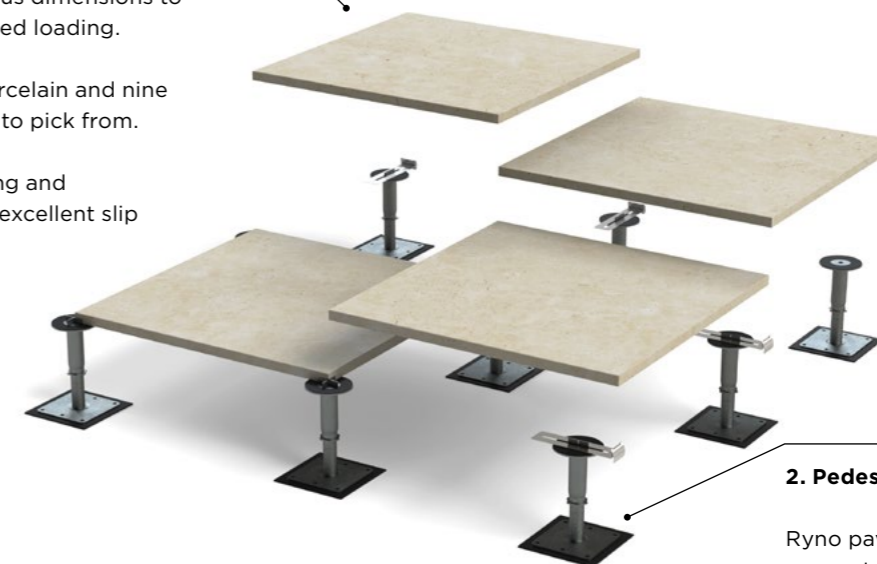
## System Overview

### 1. Paving Finish

A complete range of Ryno finishes available with various dimensions to account for increased loading.

Three ranges of porcelain and nine ranges of concrete to pick from.

Each is hard-wearing and ultra-durable, with excellent slip resistance.



### 2. Pedestal

Ryno paving pedestals and supports are unrivalled for their strength and versatility. There are a range of options available, to accommodate complex paving issues including sloped areas and low-height build-up. Suitable for use with all types of load bearing calibrated paving.

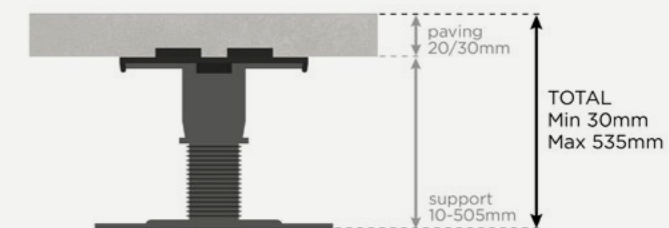
## Technical Specification

Fire rating (to EN13501-1)	A1
Height range	30mm to 525mm
Loading/compression	Concentrated/point load: 2kN Uniformly distributed: >4.0kN/m2
Warranty	30 years*
Design Life	60 years*

\*Valid when used as part of a complete RYNO IGNO system

### System Build Up

Smaller solutions are available contact us for more information



# Finishes

## Porcelain

Durable porcelain tiles available in a range of stone effect, wood grain and contemporary finishes.



**Pictured:** Corteno - Weathered Steel

## Concrete

Tough concrete tiles available in a range of finishes for high foot trafficked areas.



**Pictured:** Liora - Light Granite

### Full Range

With over 50 different paving finishes and over 25 sizes our range of paving means you don't have to compromise on your design.

Get in contact today or go online to view our full range and find the paver that's right for you.

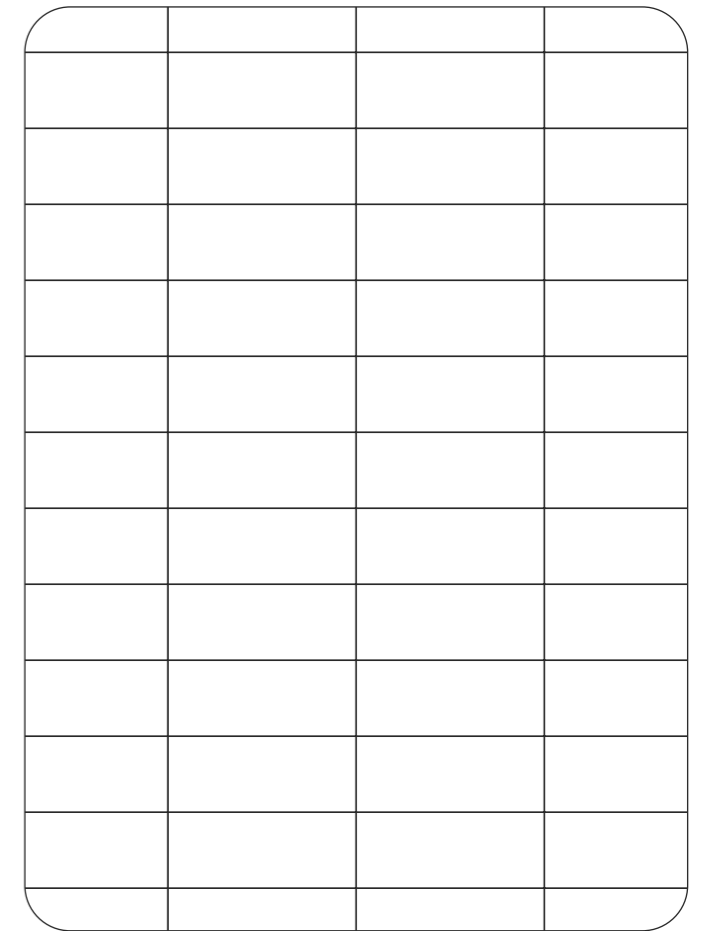
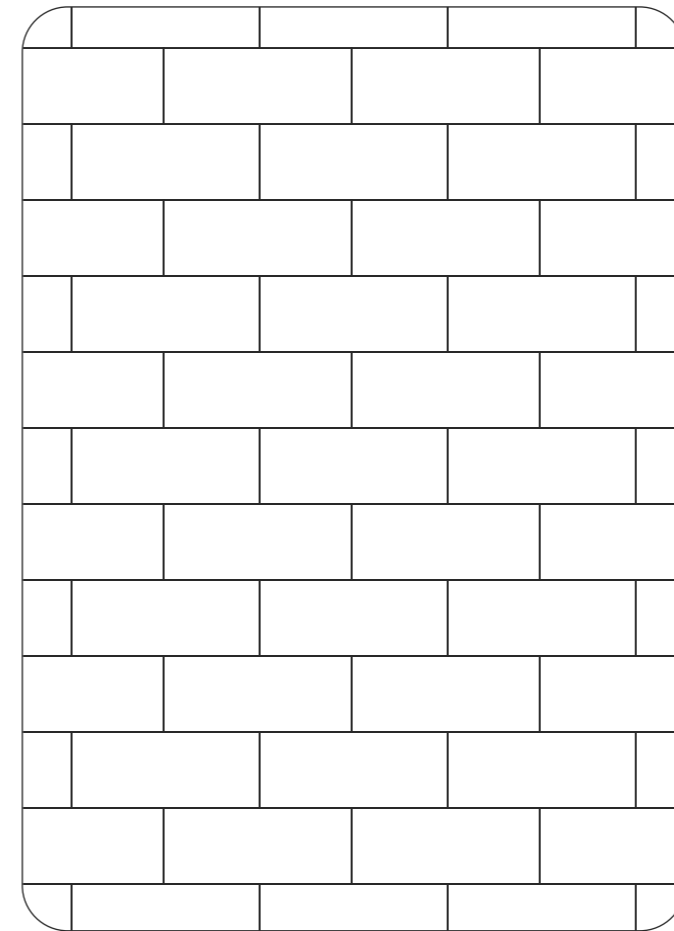




# Unleash your creativity

## Pattern

TerraSmart® Pedestal is an economical solution for the most common and straightforward formats of paving layout. If you are seeking a more complex pattern see our TerraSmart® Rail system for more information.



# Options

## Self-levelling adjustable pedestal

Offering slope correction up to 10.5%, with huge compressive strength impressive 40 - 1000mm adjustability. The head of the pedestal is fitted with in-built spacer tabs to help create uniform gaps between pavers.



## Fixed-head adjustable pedestal

The simple and economical option for supporting paving systems on completely level surfaces. 22-550mm height range available.



## Stackable paving support pad

The solution for where paving only requires minimal elevation off the substrate. Provides a minimum of 10mm build-up, and can be stacked to achieve additional build up, with the use of shims for finer height adjustment. A heavy-duty version is available for higher load applications.



## Edge spring clip

A simple but effective addition to a paving area. The edge spring clip fits on top of paving supports around the periphery of paved areas to ensure uniform spacing against wall abutments, helping ensure rapid drainage. The spring mechanism tensions the tile bed, counteracting creepage and movement.



# Options

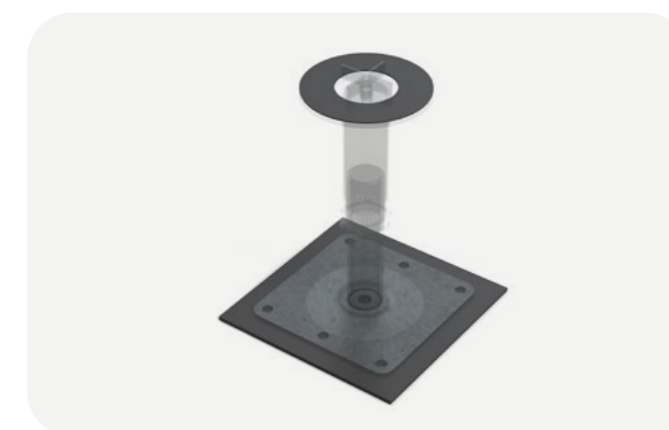
## Spreader Plate

For applications where the substrate requires lower point pressure, the 170mm circular spreader plate can be attached to the underside of the pedestal base.



## Shock-absorbent gaskets and membranes

Base shock pads can be installed under pedestal/support base to enhance acoustic properties, or to provide additional protection to membrane. Head shock pads fit on top of paving supports, cushioning tiles and removing the possibility for grit to cause grinding between tile and pedestal head.



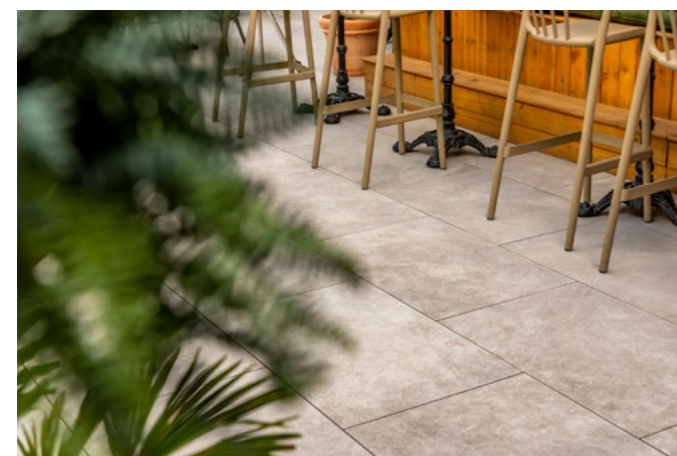
# Inspiration for your project



## The Botanist

The Botanist is a botanical cocktail bar in the heart of Newcastle. Complete with a rooftop terrace bar, it entices revellers and party-goers with a welcoming and curated look. The natural materials of the terrace bar, mixed with the abundance of plants and natural light, transports customers to a stylish, far-off paradise.

To complement and contrast the natural materials in the industrial setting, the bare materials, exposed brick, and stone effect tiles give a suggestive canvas to the biophilic decor.



# What's next?

## Inspiration

Did you flick through this brochure finding yourself thinking about a specific project? Well, we can help you out! Give our specification team a no-obligation, quick call today to answer any burning questions you might have, and find out if this is the system for you.

## Design

Our specification team are invested in your success first and foremost. If you tell them what you want, they will find a way to make it possible. When you keep up with them during a project, they focus on finding you bespoke solutions to keep costs down and keep the project safe.

## Support

We don't just ship your system and then send you on your way! We want to make sure that you are supported wherever and whenever you might need it. We know that things can change at the flick of a switch, so whatever you need, our project delivery team are here to help.

## Finish

Once all is said and done, drop in past The Studio in Clerkenwell for a friendly smile and a good cup of coffee, or get yourself booked in for a RIBA-certified CPD to keep up-to-date with the changing landscape of balconies and terrace compliance



# View the rest of the **TerraSmart®** range



## TerraSmart®

Vitrified Composite® Decking System

A1 fire-rated, wood effect decking systems for waterproofed substrates



## TerraSmart®

Rail Paving System

Premium, versatile paving system for waterproofed substrates



## TerraSmart®

Aluminium Decking System

Decking system for waterproofed substrates

## TerraSmart®

Composite Decking System

Wood-plastic composite decking system for outdoor spaces

## TerraSmart®

Pedestal Paving System

Straightforward, robust paving system for waterproofed substrates, **where non-combustibility isn't required**

## TerraSmart®

Rail Paving System

Premium, versatile paving system for waterproofed substrates, **where non-combustibility isn't required**