

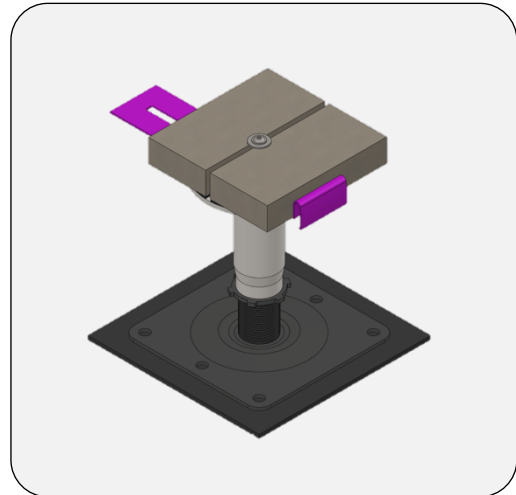
# Wind Uplift

## Visual wind uplift fixing for TerraSmart® Pedestal



### Overview

The discreet flange headed screw and washer combine to secure tiles to the pedestals via the bespoke tapped hole. Tightening the screw clamps the paving to the pedestal and provides a successful countermeasure against the effects of wind uplift, resistant to an uplift force of 6kPa\*.



\*when used in conjunction with the TerraSmart® Pedestal Paving System

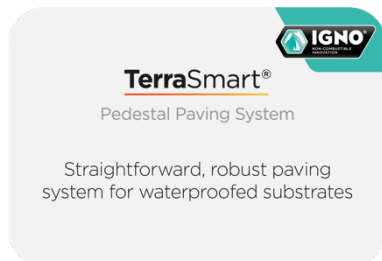
### Performance

<p><b>Cyclic Wind Load Testing in accordance with EOTA Technical Report TR005:2003</b></p>	<p>Product tested to a maximum of 6000 Pascals in pulsed cycles.</p> <p>No detrimental effects to any of the system were found and no failures were observed during testing.</p>
--	--

### Components

Component	Description
Screw	Marine Stainless (A4) M4 socket flanged button screw, 35mm thread length
Washer	Marine Stainless (A4) M4 washer, 15m diameter
Tapped head pedestal	Zinc-nickel coated steel pedestal from the RP-FR range, featuring tapped centre hole in pedestal head

## Compatible Systems



**Got questions?**

**Speak to one of our expert advisors**

Visit [www.rynogroup.co.uk](http://www.rynogroup.co.uk) or call us today on **+44 (0)203 967 3500** or reach out on [sales@rynogroup.co.uk](mailto:sales@rynogroup.co.uk).