

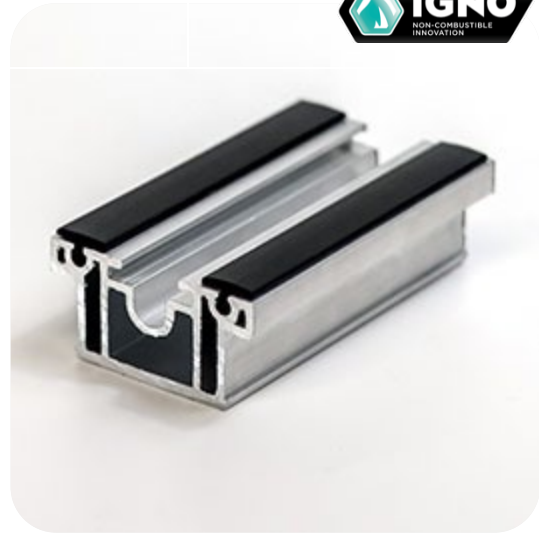
PR32 Aluminium Support Rail



Overview

Non-combustible aluminium support rail designed to support calibrated paving. Rails can be secured to decking pedestals or cleats to create a strong and durable support structure for your system.

- Manufactured from incredibly strong and lightweight aluminium
- 600mm allowable span
- Available in mill finish or can be powder-coated



Performance

Allowable load	Uniformly distributed >4.0kN/m ² , Concentrated 2kN
Material	Aluminium alloy 6063 - T6
Biological/Chemical	Resistant to moulds, algae, alkali, bitumen, UV
Reaction to fire	Mill finish - A1 (inherently non-combustible)
Compatible supports	ADC, RD-FR, RDA-C, RDF, RDC
Warranty	30 years*
Design life	60 years*

*Valid when used as part of a complete RYNO IGNO system

Dimensions

Joist code	Height	Width	Stock lengths
PR32	32mm	48mm	3600mm

Spans

Joist code	Joist centres	Maximum span (UDL - 4.0kN/m ² Point load - 2kN)**
PR32	≤ 600mm	600mm

** Full span data/loadings available on request

Compatible Systems

TerraSmart® Rail

Premium, versatile paving system for waterproofed substrates

BalcaSmart® Rail

Premium, versatile paving system for metal framed balconies

TerraSmart® Rail

Premium, versatile paving system for waterproofed substrates, **where non-combustibility isn't required**