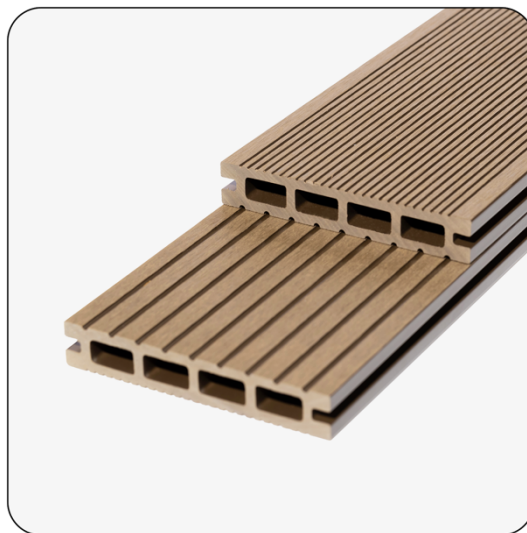


# Classic™ Composite Decking Board

## Overview

Classic™ wood-polymer composite (WPC) decking board has a contemporary, grooved appearance.

- Long-lasting: will not rot, warp or twist
- Non-slip and splinter-proof
- Low maintenance: no need to treat or stain
- Manufactured using certified timber



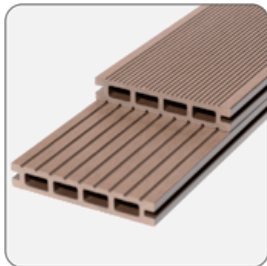
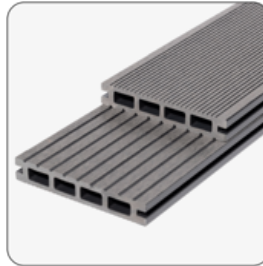
## Performance

<b>Density - ASTM D792-13 Method B</b>	1.33 g/cm <sup>3</sup>
<b>Flexural strength - ASTM D790-10 Procedure A</b>	40.4MPa
<b>Flexural modulus - A</b>	5240MPa
<b>Izod unnotched impact strength - ASTM D4812-11</b>	72 J/m (Complete break)
<b>Shore hardness - With Ref to ASTM D2240-05 (2010)</b>	D/72/1
<b>Tensile strength - ASTM D638-14</b>	25.5MPa
<b>Water absorption - ASTM D570-98 (2010)</b>	1.15%
<b>Coefficient of linear thermal expansion (1/Co) ASTM D696-08</b>	-30°C ~30°C: 31.85x10 <sup>-6</sup>
<b>Slip resistance - (Pendulum Test) - Narrow Grooves</b>	PTV (Dry) 49, PTV (Wet) 37 - Low risk of slip
<b>Slip resistance - (Pendulum Test) - Wide Grooves</b>	PTV (Dry) 50, PTV (Wet) 37 - Low risk of slip
<b>Reaction to fire - EN ISO 13501-1</b>	C <sub>fi</sub> - s1

## Dimensions

Code	Width	Thickness	Length
Decking Board	150mm	25mm	3000mm

## Finishes

**Chocolate****Sand****Charcoal****Slate**

## Accessories

**Edge profile**

Alternative way of capping off board ends/step treads.

**Plastic T-clip**

For a 6mm gap between boards

**Metal clasp**

For a 4mm gap between boards

**Decking Screw - Black**

3.9 x 30mm CK screw for Plastic T-Clips

## Accessories (Cont.)



### **Starter/End Clip**

For fixing down decking at start and finish of decking areas

## Compatible Systems

### **TerraSmart**<sup>®</sup>

Composite Decking System

Wood-plastic composite decking system for outdoor spaces

## Got questions?

### **Speak to one of our expert advisors**

Visit [www.rynogroup.co.uk](http://www.rynogroup.co.uk) or call us today on **+44 (0)203 967 3500** or reach out on [sales@rynogroup.co.uk](mailto:sales@rynogroup.co.uk).